



AUGENBLICK,  
PALAICH AND  
ASSOCIATES

# Attendance Area Size Adjustment

Amanda Brown, APA

June 21, 2024

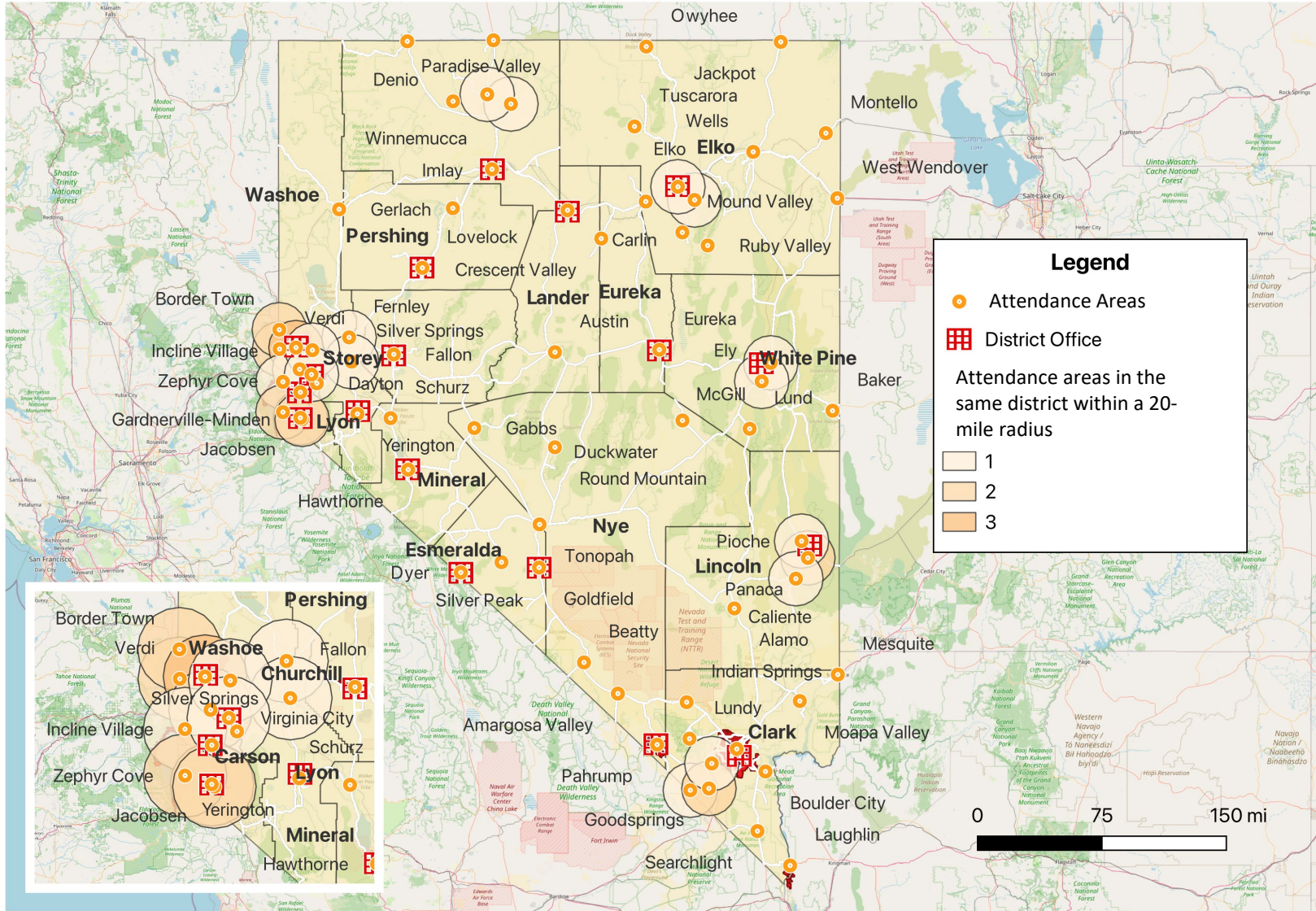
# Today's Presentation

- Additional attendance area mapping
- Recommendations for an attendance area definition for funding purposes
- Next steps

# Additional Attendance Area Mapping

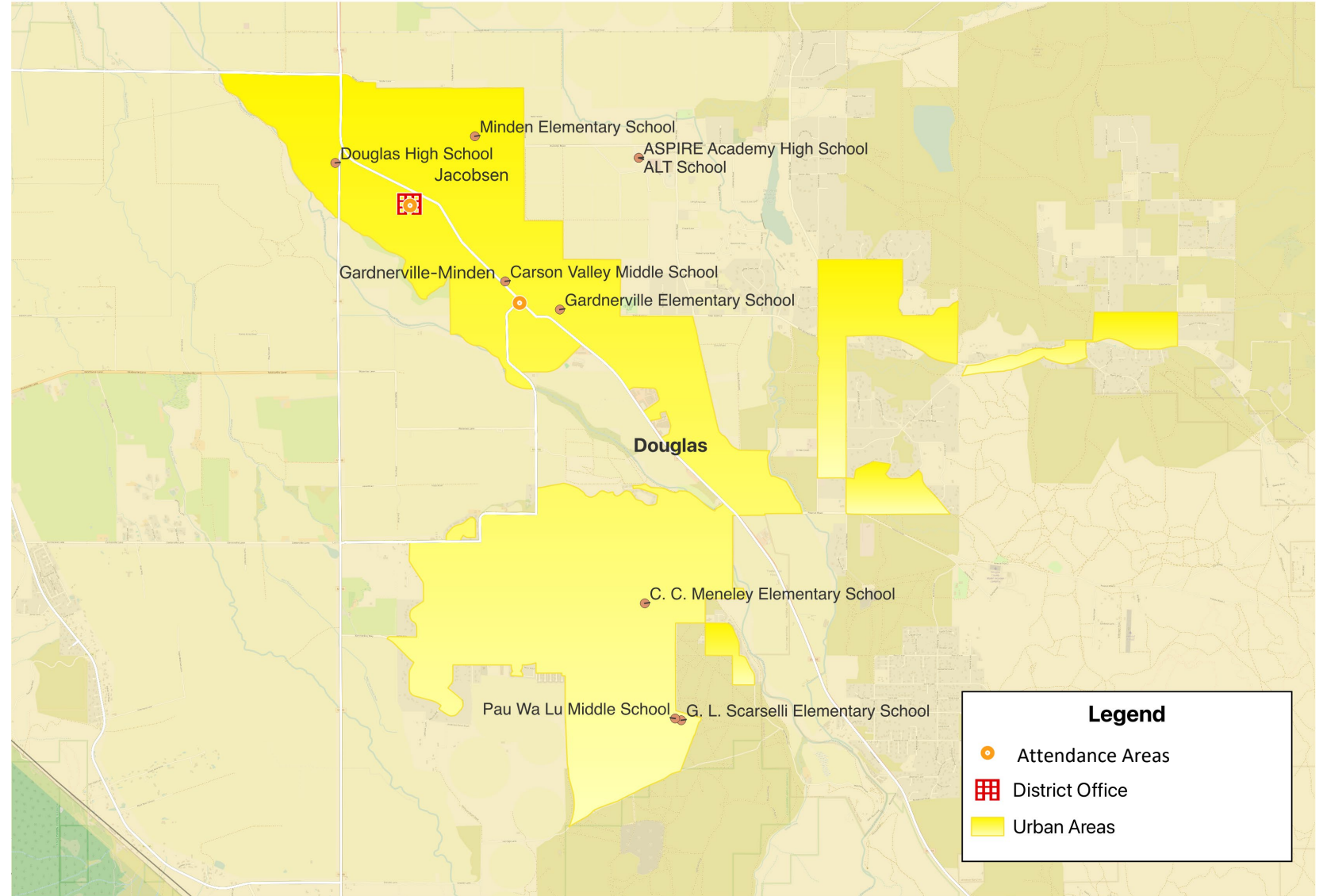
- Mapped schools and district central offices
- Added in some information about density
  - Limited data available, but mapped density using Department of Transportation data on Urban Areas (UAs)
    - UAs defined as either a minimum population of 5,000 or a housing unit count of 2,000 units.
- Explored the drive time distance between attendance areas and district central offices

# Nevada Attendance Areas Within 20 Miles of One Another (in the same district)



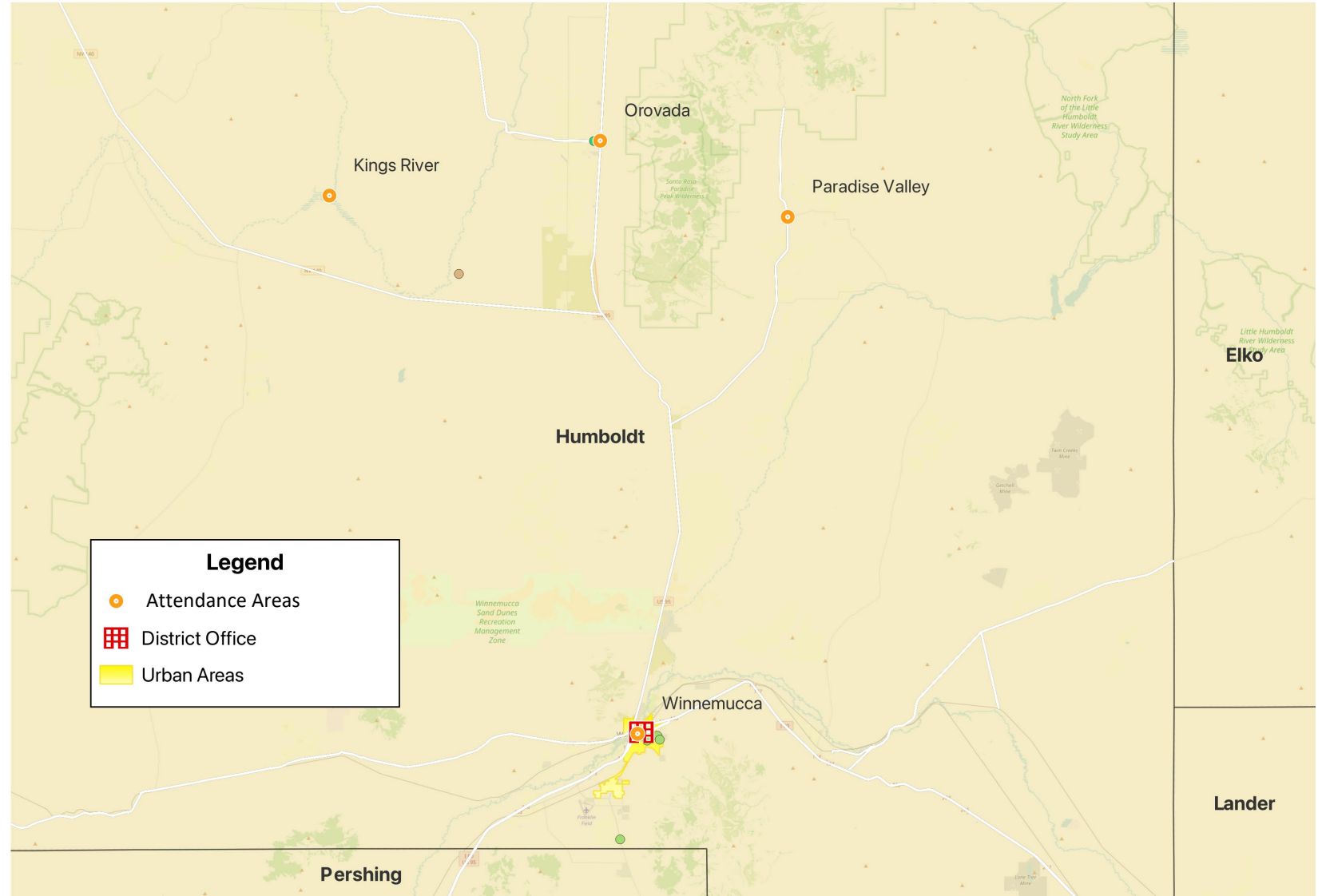
## Example 1: Two Attendance Areas within 20 miles of each other

- **Gardnerville-Minden and Jacobson**
  - Both in a dense area that is contiguous
  - Both attendance areas within a 15-minute drive of central office



## Example 2: Two Attendance Areas within 20 miles of each other

- **Orovada and Paradise Valley**
  - Both attendance areas more than a 40-minute drive from the central office (and each other due to geographic barriers/ roads)



# Recommendations for an Attendance Area Definition

- APA recommends applying the following criteria to determine attendance areas for funding purposes based upon (1) distance, (2) travel time, and (3) extenuating circumstances
  - Applying these criteria to the two examples, would allow for two attendance areas in one district (Orovada and Paradise Valley) and combine two attendance areas (Gardnerville-Minden and Jacobson) in another

Be separated by more than 20 miles from another attendance area

If less than 20 miles from another attendance area, be more than a 30-minute drive away from a district's central office

If less than a 30-minute drive, must have extenuating circumstances that necessitate a separate attendance area, subject to approval

# Next Steps

- With a draft definition approved:
  - Identify a revised list of attendance areas for funding purposes
  - Share list with districts to gather feedback and identify any extenuating circumstances
  - NDE, with potentially the help of CSF members, to approve any changes to revised attendance area list
- Evaluate funding impact due to change and consider if there should be any transitional funding period



# Questions?

- Any suggested changes to the recommendations for a definition of attendance areas for funding purposes?
- Any additional information needed?
- Any other questions?