

# **Proposed Revision to the School Nurse NEPF Framework**

**Teachers and Leaders Council Meeting**

**January 29, 2020**

**Agenda Item # \_\_\_**

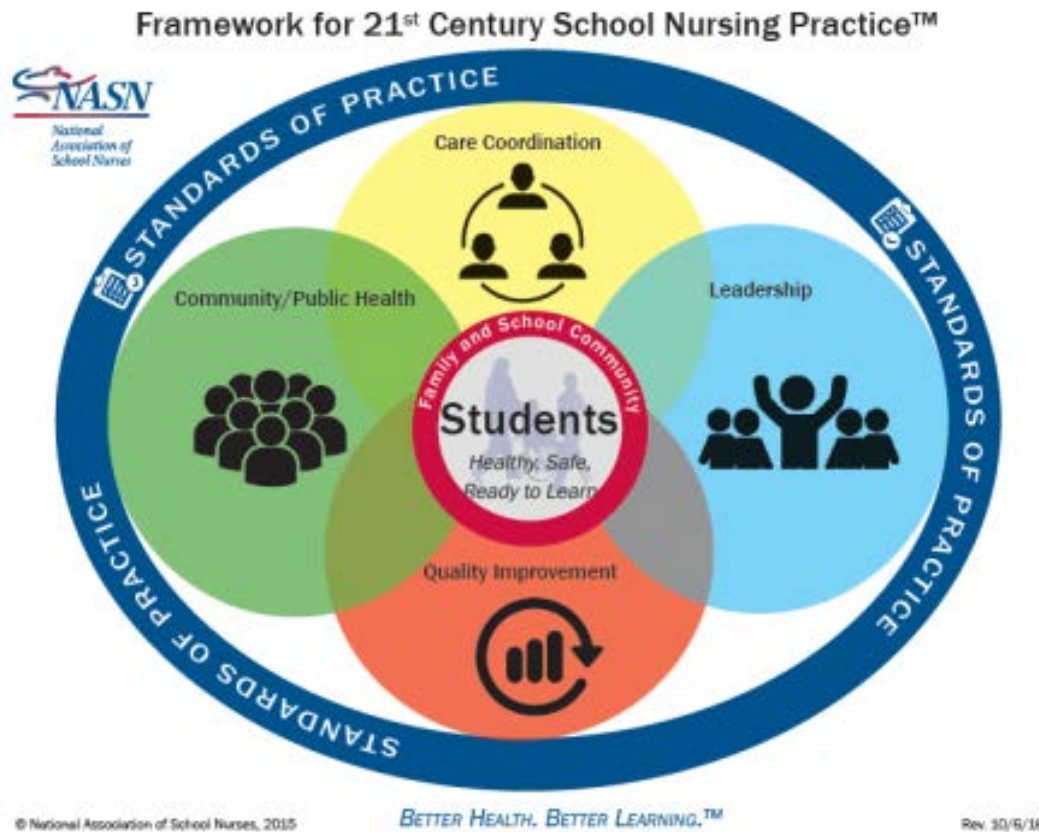
# NRS 391.675

**Evaluations of counselors, librarians and certain other licensed educational personnel.** The State Board may provide for evaluations of counselors, librarians and other licensed educational personnel, except for teachers and administrators, and determine the manner in which to measure the performance of such personnel, including, without limitation, whether to use pupil achievement data as part of the evaluation.

## **Supporting NRS:**

- **NRS 391.460:** TLC to make recommendations to State Board concerning statewide performance evaluation system; authorization to establish working groups and task forces.

# Framework for 21<sup>st</sup> Century School Nursing Practice



# Framework for 21<sup>st</sup> Century School Nursing Practice

## Framework for 21<sup>st</sup> Century School Nursing Practice™

NASN's *Framework for 21st Century School Nursing Practice* (the Framework) provides structure and focus for the key principles and components of current day, evidence-based school nursing practice. It is aligned with the Whole School, Whole Community, Whole Child model that calls for a collaborative approach to learning and health (ASCD & CDC, 2014). Central to the Framework is student-centered nursing care that occurs within the context of the students' family and school community. Surrounding the students, family, and school community are the non-hierarchical, overlapping key principles of Care Coordination, Leadership, Quality Improvement, and Community/Public Health. These principles are surrounded by the fifth principle, Standards of Practice, which is foundational for evidence-based, clinically competent, quality care. School nurses daily use the skills outlined in the practice components of each principle to help students be healthy, safe, and ready to learn.



ASCD & CDC. (2014). *Whole school whole community whole child: A collaborative approach to learning and health*. Retrieved from <http://www.ascd.org/ASCD/pdf/siteASCD/publications/wholechild/wscce-collaborative-approach.pdf>

© National Association of School Nurses, 2015

BETTER HEALTH. BETTER LEARNING.™

Rev. 10/6/18

# 2019 School Nurse Revision Meetings

- Members of the Revision Workgroup included:
  - Yvonne Chaves RN, School Nurse Coordinator, Clark CSD
  - Heather Strasser RN, School Nurse Coordinator, Clark CSD
  - Karen Fossile RN, School Nurse Coordinator, Clark CSD
  - Bobbi Shanks RN, Nursing Director, Elko CSD
  - Mary Headley RN, School Nurse, Elko CSD
- Members met in person/phone and shared working Google documents:
  - October 29, 2019
  - November 7<sup>th</sup> and November 21<sup>st</sup> 2019
  - December 3<sup>rd</sup> and December 6<sup>th</sup> 2019
  - January 10<sup>th</sup>, January 13<sup>th</sup>, and January 14<sup>th</sup> 2020

# Proposed Rubric

- Please see Meeting Materials for Handout

# Possible Motion

- Approve the recommended revision of the School Nurse NEPF Framework for adoption beginning with the 2020-2021 school year.