

# Focus Area: SOCIAL EMOTIONAL LEARNING AND MENTAL HEALTH

## OVERVIEW

Through three rounds of federal relief funding for education, the Nevada Department of Education (NDE) has received approximately \$1.5 billion to support our COVID-19 response, recovery, and renewal. In each round, 90% of funds were distributed to local education agencies (school districts and the State Public Charter School Authority) on a federal formula basis, while 10% of funds were reserved for Statewide activities. NDE established four focus areas to efficiently and effectively leverage federal relief funding to support students, staff and families: Advancing Equity; Teacher Recruitment and Retention; Social-Emotional Learning and Mental Health; and Efficiencies for Long-Term Success. These four "buckets" ensure alignment of resources with both stakeholder priorities and federal requirements for COVID-19 recovery and renewal.

**Social-Emotional Learning and Mental Health** is focused on supporting the mental health of Nevada students and educators, especially in light of the negative mental and emotional health impacts from the COVID-19 pandemic. This work program aligns with several NDE Values as established in the Statewide Plan for the Improvement of Pupils (STIP), including **Equity, Access to Quality, Inclusivity, and Community**.

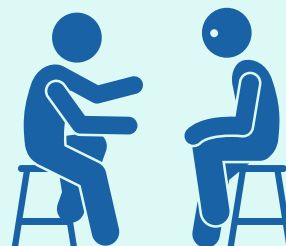
Further, Social-Emotional Learning and Mental Health supports multiple NDE STIP Goals, including:

- Goal 3: All students experience continued academic growth.
- Goal 4: All students graduate future-ready and globally prepared for postsecondary success and civic life.
- Goal 6: All students and adults learn and work together in safe environments where identities and relationships are valued and celebrated.

# FEATURED PROJECTS

## School-Based Mental Health Professionals

**Budget:** \$7.5 million



**Project Overview:** Funding has been awarded to Nevada district and charter schools to hire 100 school-based mental health professionals.

**Rationale:** Nevada’s students, educators, and school leaders are grappling with mental health impacts from the pandemic and require additional support. These additional licensed providers will support staff and student populations Statewide with ongoing recovery from the pandemic and its effects.

## Supporting LEAs in Trauma-Informed and Restorative Practices

**Budget:** \$4.86 million



**Project Overview:** Resources to provide [Social, Emotional, and Academic Development \(SEAD\)](#) supports, trauma services, and restorative practices training to Local Education Agencies (LEAs), as well as to sustain the School Climate Survey. This project includes embedding social-emotional learning competencies into Nevada’s academic content standards. Additionally, it will support the SEAD Center, SEAD Training, micro-credentialing, and teacher training stipends over three years, with a goal of encouraging peer-to-peer training and supports throughout Nevada. Finally, the largest portion of funding will provide training in Restorative practices, which promote healthy interactions among students and staff, and teach social, emotional, and self-regulation skills. Importantly, shifting from exclusionary to restorative disciplinary practices reduces instances of students being removed from classrooms and missing instruction to address their behavior.

**Rationale:** Trauma-Informed and Restorative Practices are critical to creating safe and welcoming school environments and are relatively new to Nevada’s educators and staff. This investment will enable NDE to appropriately support districts and schools as they continue to adopt these new practices.

# Training and Supports to Improve Law Enforcement and School Safety Specialists' Youth Mental Health Response

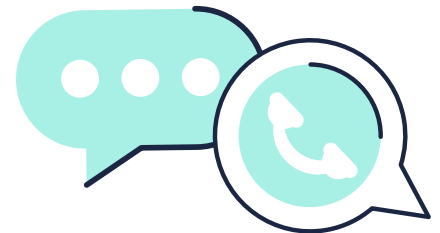


**Budget:** \$1.0 million

**Project Overview:** Resources support training for law enforcement to respond to student mental health concerns effectively. This funding will also support implementation of a study to examine the experiences of law enforcement agencies with student wellbeing initiatives; study the relationship between law enforcement and other entities; and develop standards of practice related to youth mental health response.

**Rationale:** In Nevada, law enforcement partners support NDE and school districts in responding to SafeVoice tips related to mental and behavioral health crises. To this end, mental health training and supports are critical in order to ensure that law enforcement is adequately prepared to safely and effectively meet the needs of students and families.

## Sustaining SafeVoice

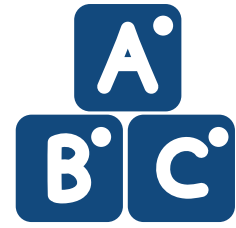


**Budget:** \$333,000

**Project Overview:** Resources will be provided to sustain the SafeVoice platform, including a subgrant to the Department of Public Safety (DPS) to continue to provide the necessary level of 24/7 staffing required to respond to tips. In addition, funds will support the technical maintenance of the SafeVoice platform.

**Rationale:** The SafeVoice system has been used extensively throughout the pandemic by students, parents, educators, and other members of the school community. With its ability to provide 24/7 support and on-the-ground response in partnership with law enforcement agencies, it is imperative that SafeVoice remains active.

# Social Emotional Support for Our Youngest Learners

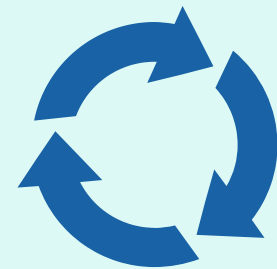


**Budget:** \$230,000

**Project Overview:** This project provides intensive services and coaching that promote the social emotional development and school readiness of young children birth to age 5. Operating through the combined efforts of NDE, UNR, UNLV, and the Nevada Pyramid Model Partnership, this collaboration will work over the next 2 years to establish a comprehensive early childhood professional development system. This professional development system will work to support a workforce prepared to support children’s social emotional competence.

**Rationale:** Due to the pandemic, many children had limited-to-no previous high-quality pre-kindergarten experiences. Further, many families and children experienced trauma related to the pandemic and youngest learners need additional social-emotional supports in this time.

## Multi-Tiered Systems of Support

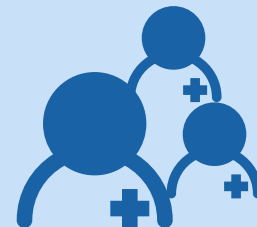


**Budget:** \$2.5 million

**Project Overview:** A Multi-Tiered Systems of Support (MTSS) coach will be hired to assist each district in implementing a comprehensive continuum of evidence-based supports for students and staff. MTSS is a systematic continuous improvement framework in which data-based problem-solving and decision-making is practiced across all levels of the educational system for supporting students.

**Rationale:** MTSS helps schools to identify struggling students early so that they may receive assistance quickly and includes data-driven universal teaching approaches to reduce the number of students needing interventions.

# Expanding Infinite Campus for Social-Emotional Support



**Budget:** \$153,000

**Project Overview:** NDE will build out reporting features related to specialized instructional support personnel (SISP) in the Statewide student information system, Infinite Campus. SISP include school counselors, nurses, psychologists, social workers, and library media specialists.

**Rationale:** This enhanced capability will support the successful implementation of the Lifeline project currently being developed and implemented throughout Clark County School District as a pilot for all other school districts.

# Staff and Student Training for Suicide Prevention



**Budget:** \$458,382

**Project Overview:** Training will be provided to all levels of school staff and students around suicide prevention, including information on how to recognize suicide warning signs, raising awareness of mental health and youth suicide prevention resources, and building capacity by empowering students and staff through peer-to-peer training.

**Rationale:** In response to the increase in students dying by suicide due to the circumstances created by the COVID-19 pandemic, this work is of paramount importance to support the mental health of Nevada's students.

