

**Nevada Educator Performance Framework (NEPF)
2018-2019 Data Review
&
Teachers and Leaders Council Recommendations
for NEPF Summative Score Ranges**

**Nevada State Board of Education Meeting
November 14, 2019**

Authority of the State Board of Education

NRS 391.485 Annual review of statewide performance evaluation system; annual review of manner in which schools carry out evaluations pursuant to system.

1. The State Board shall annually review the statewide performance evaluation system to ensure accuracy and reliability. Such a review must include, without limitation, an analysis of the:
 - (a) Number and percentage of teachers and administrators who receive each designation identified in paragraph (a) of subsection 2 of NRS 391.465 in each school, school district, and the State as a whole;
 - (b) Data used to evaluate pupil growth in each school, school district and the State as a whole, including, without limitation, any observations; and
 - (c) Effect of the evaluations conducted pursuant to the statewide system of accountability for public schools on the academic performance of pupils enrolled in the school district in each school and school district, and the State as a whole.

NEPF 2018-19

Summative Evaluation Data Review

Data Limitations

- Incomplete data from districts due to n-size
- Educators exempt per NRS 391.690
- Data does not include educators who separated from district prior to summative rating

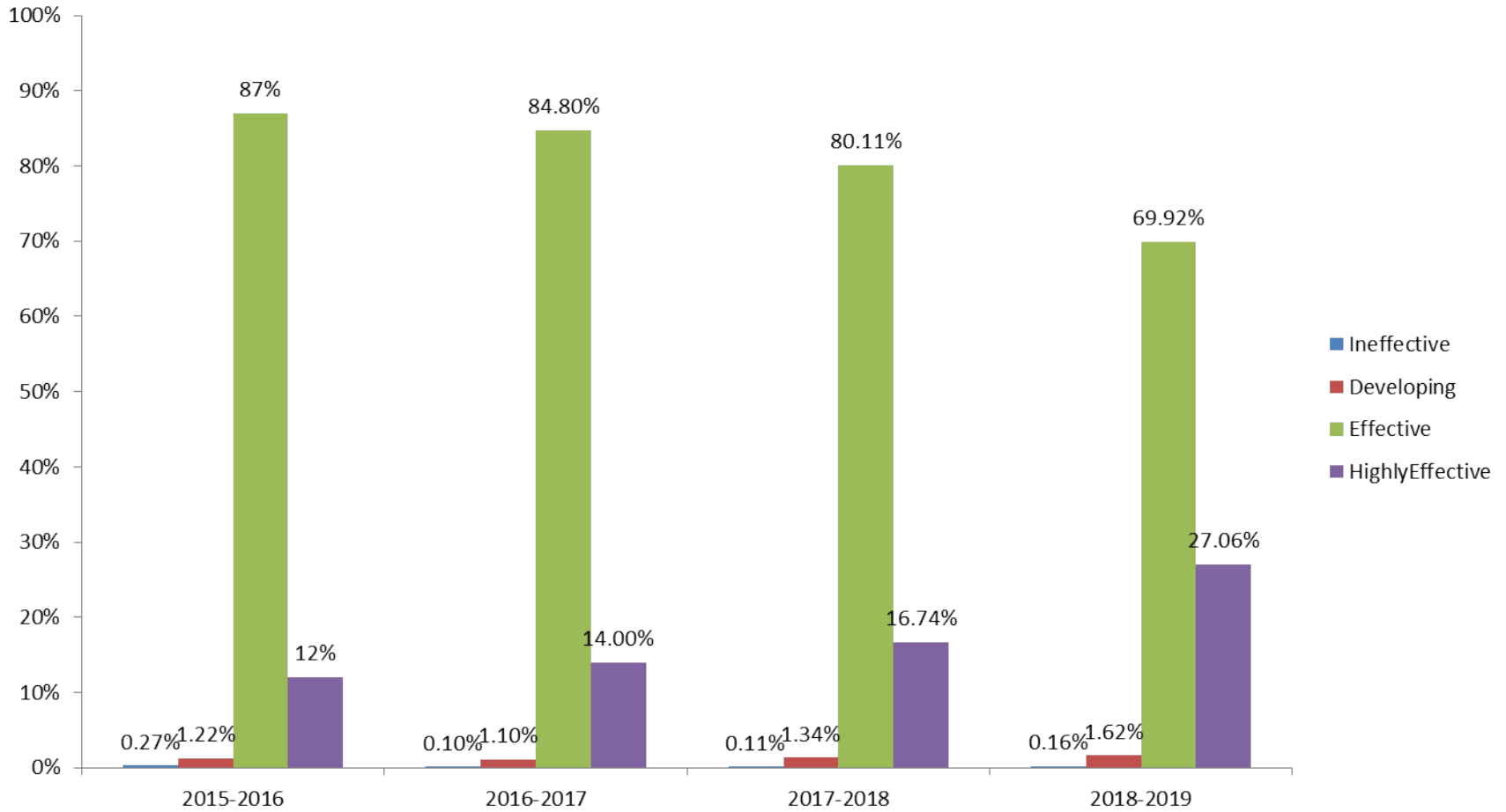
Overview of Ratings

Overview of NEPF Ratings

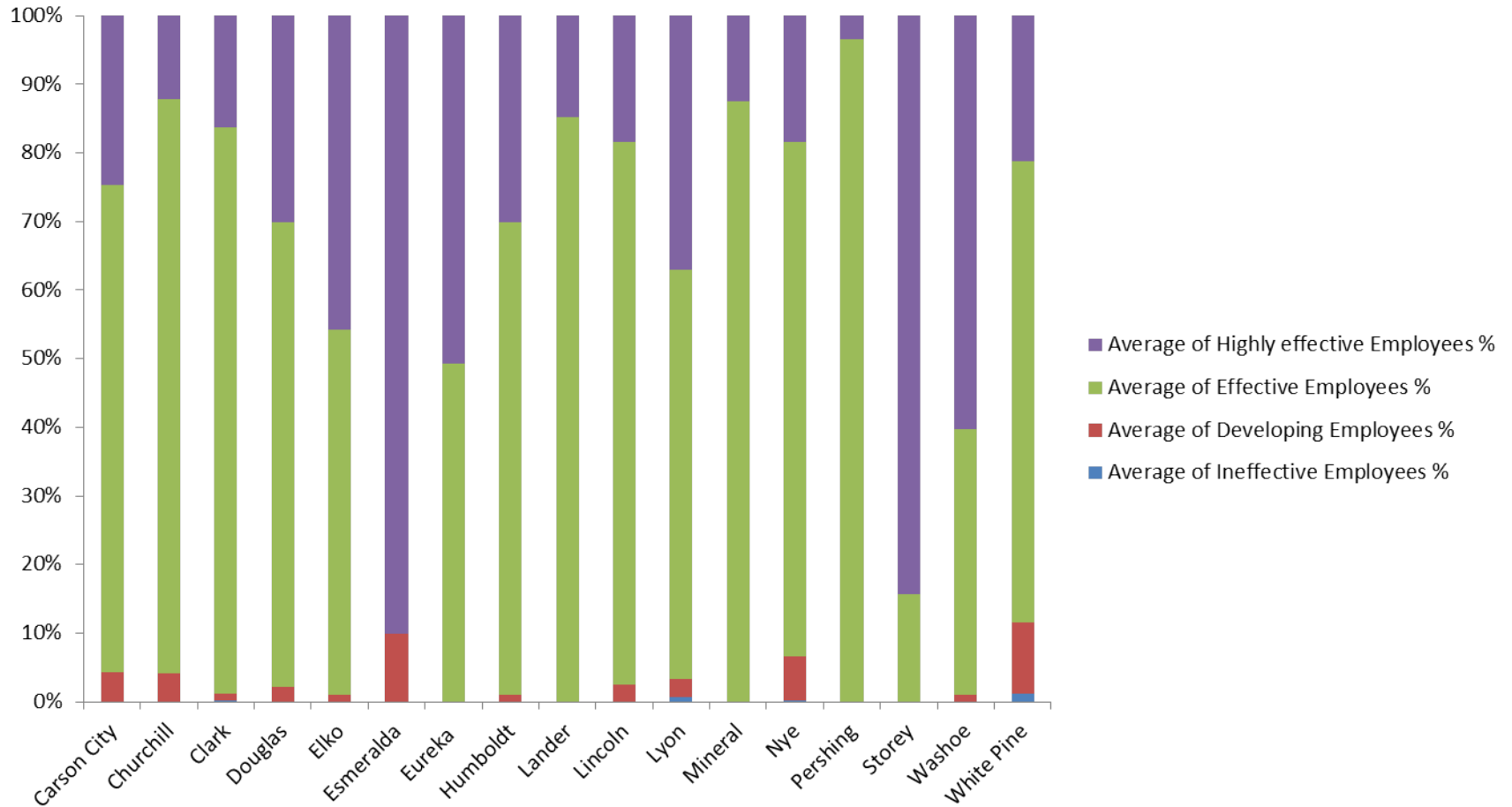
Professional Group	Total	Ineffective	Developing	Effective	Highly Effective	Average Summative Score
School Administrators	1,227	0	9	907	311	3.33
School Counselors	841	0	3	531	307	3.44
School Nurse	262	0	2	250	10	3.20
School Psychologists	218	0	0	138	80	3.44
School Social Workers	64	0	0	52	12	3.35
Speech-Language Pathologists	449	0	1	279	169	3.32
Teachers	20,815	33	233	15,575	4,988	3.30
Teacher-Librarians	222	1	2	149	70	3.37

Teacher Ratings

Teacher Ratings Trend Data

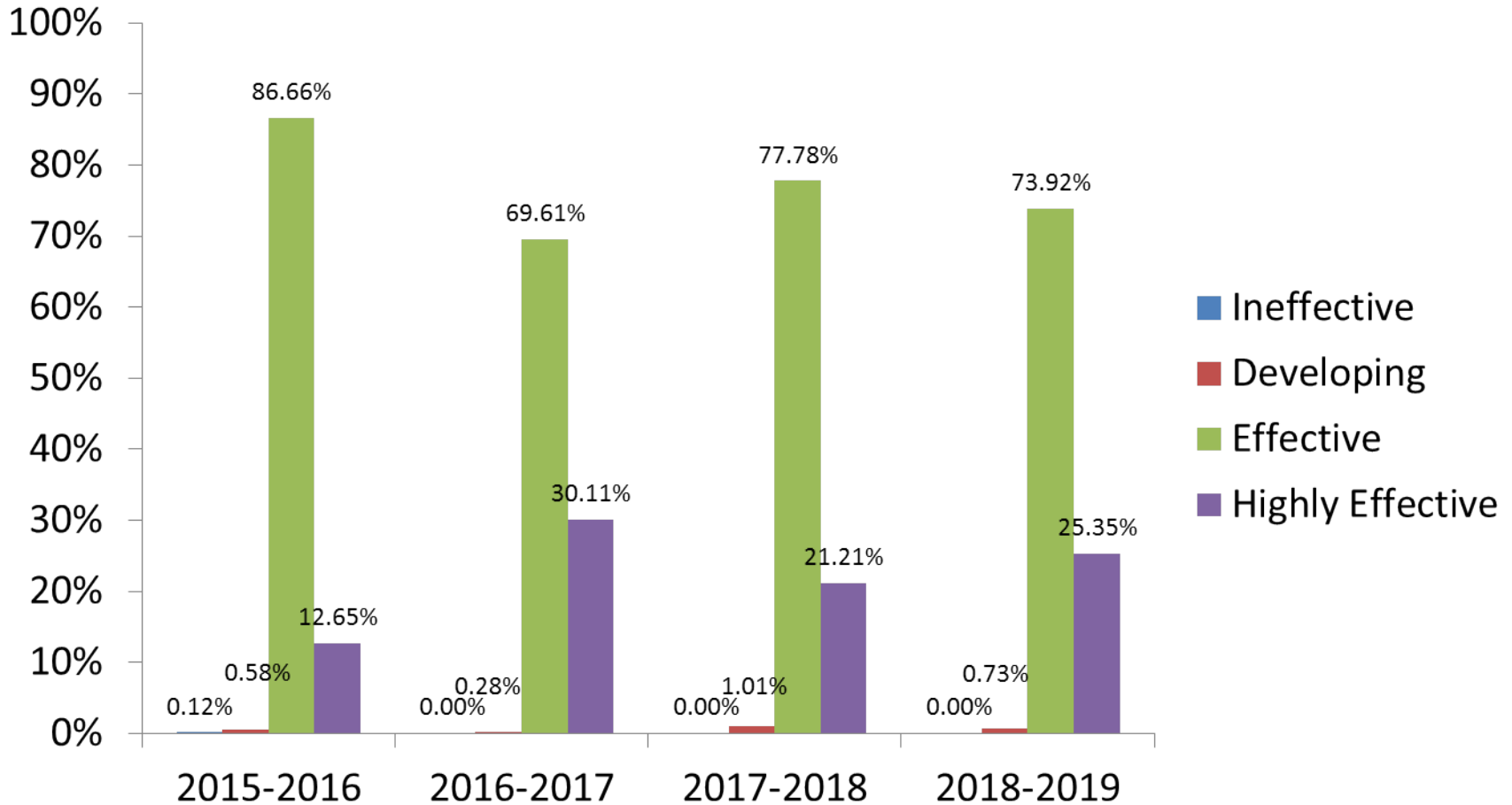


Summative Teacher Scores by District

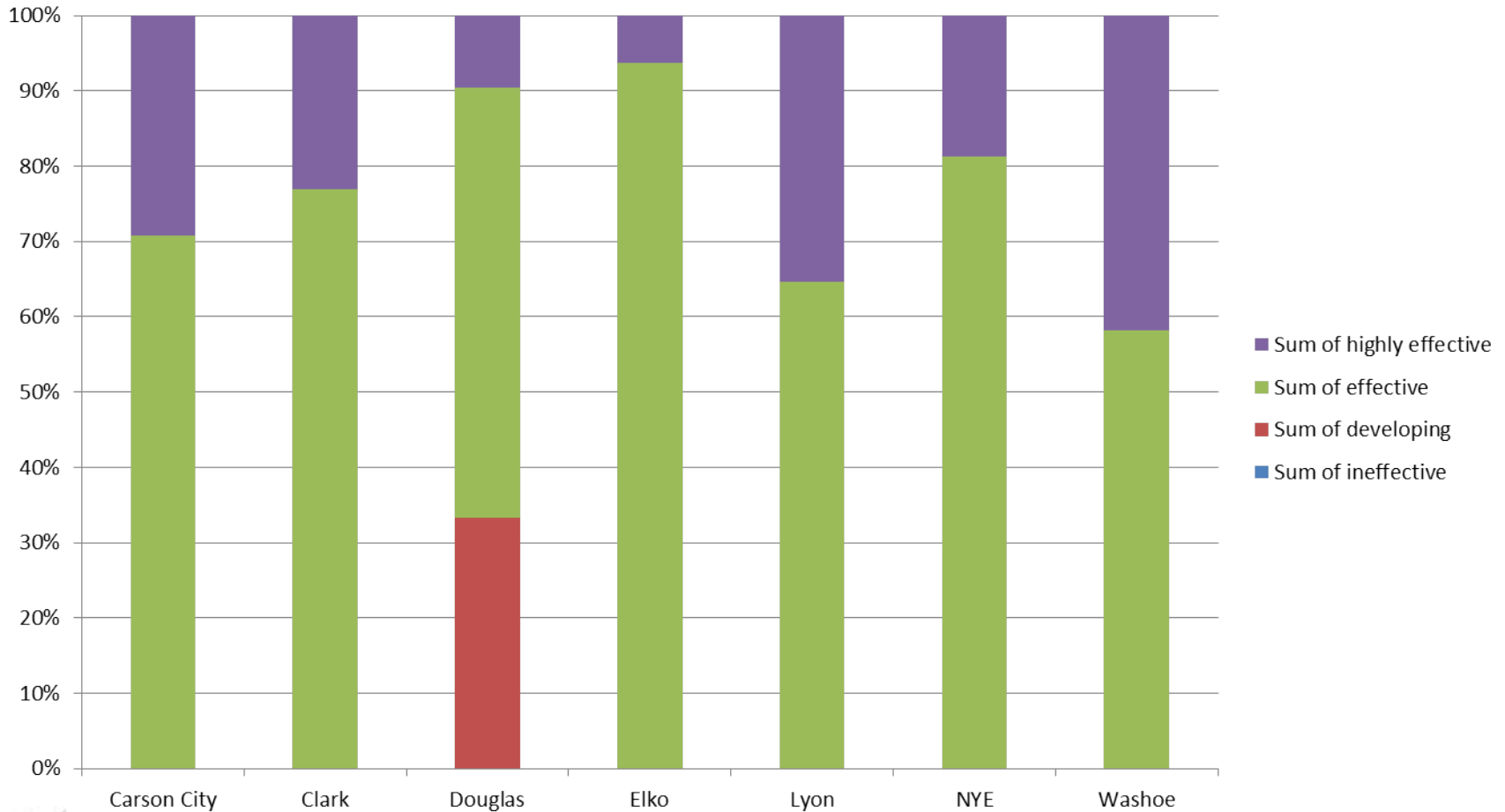


School Administrator Ratings

Administrator Ratings Trend Data



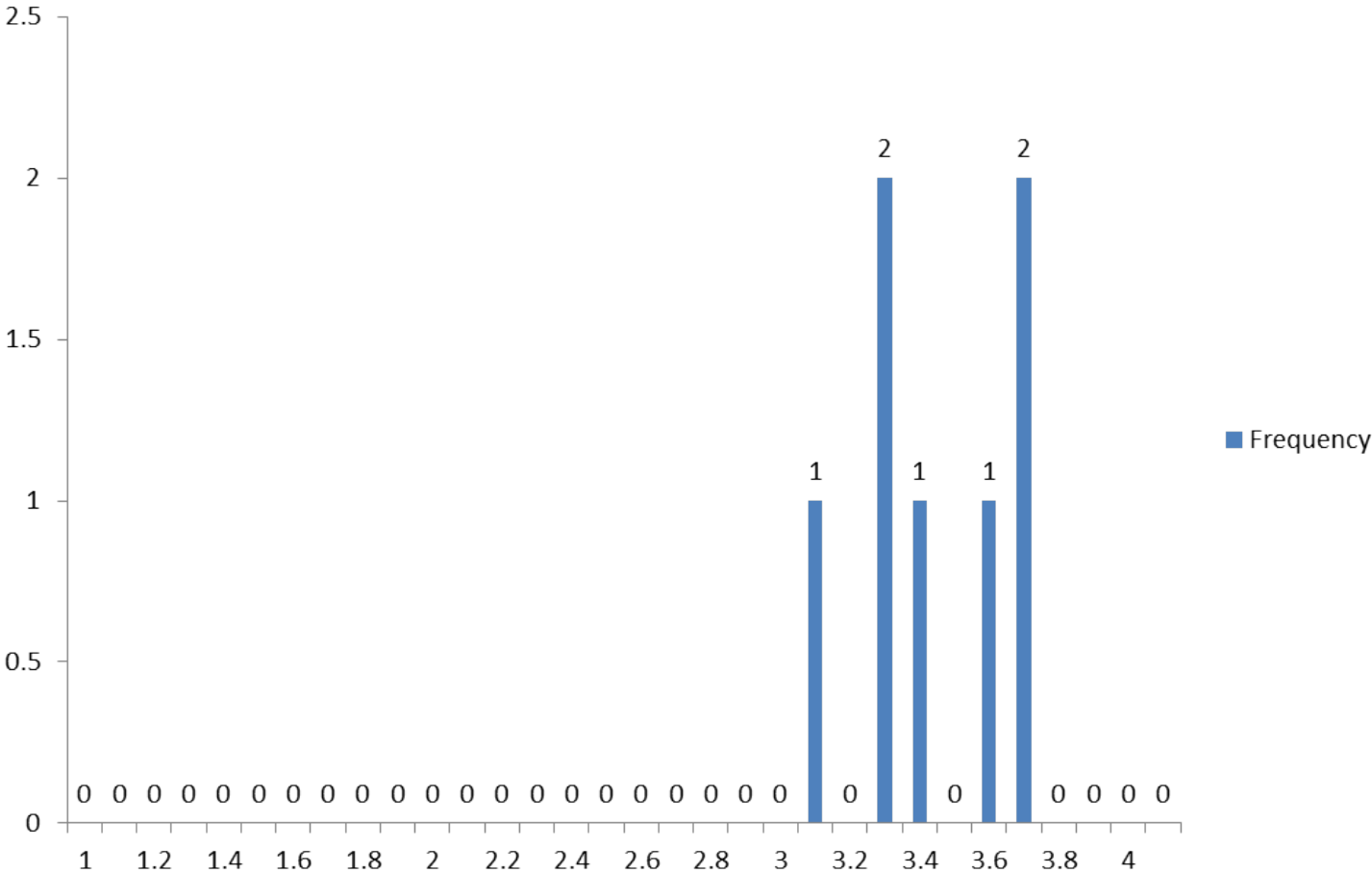
Summative Administrator Scores by District



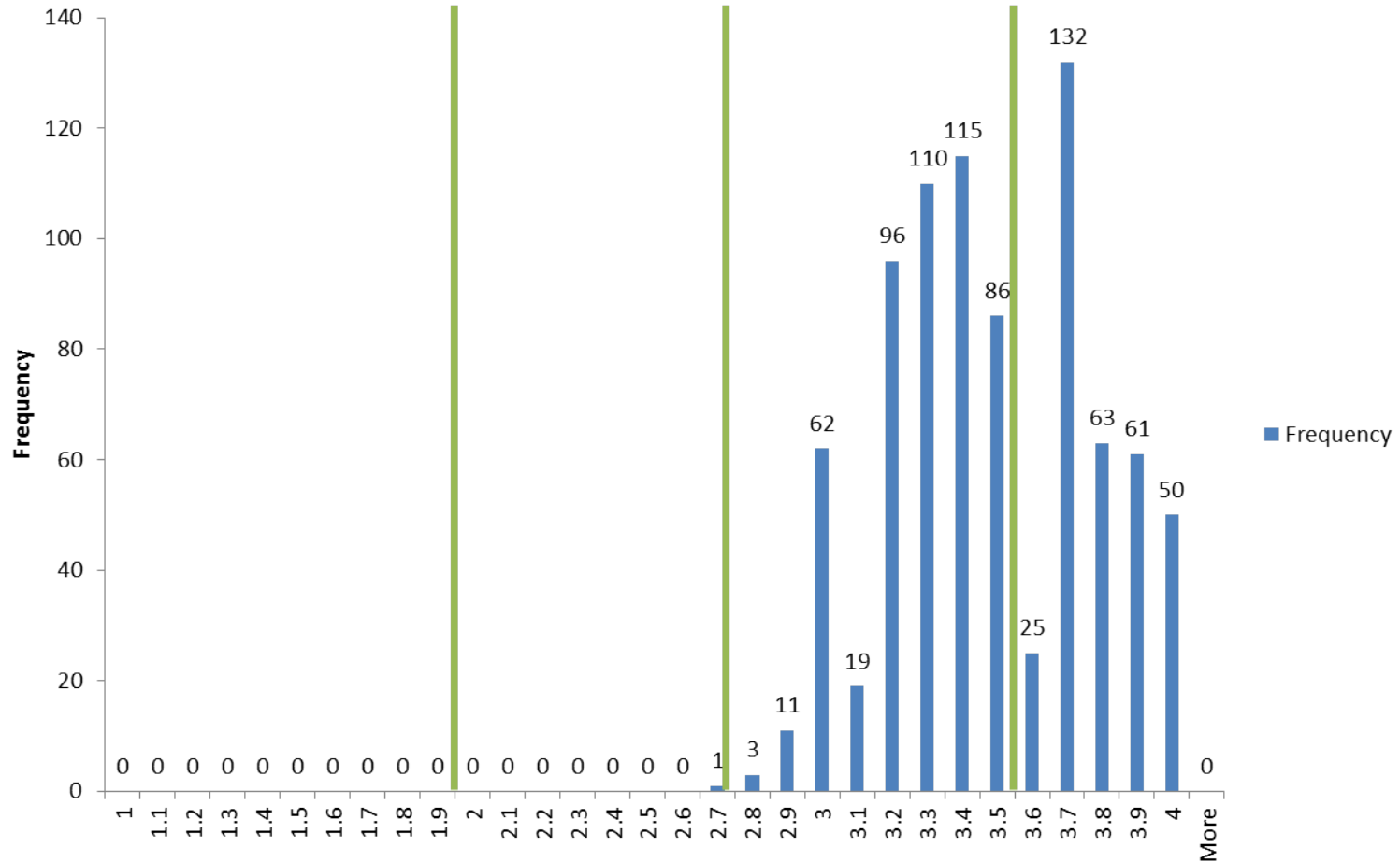
Data suppressed due to small n-size or data was not reported by district

Ratings of Other Licensed Education Professionals

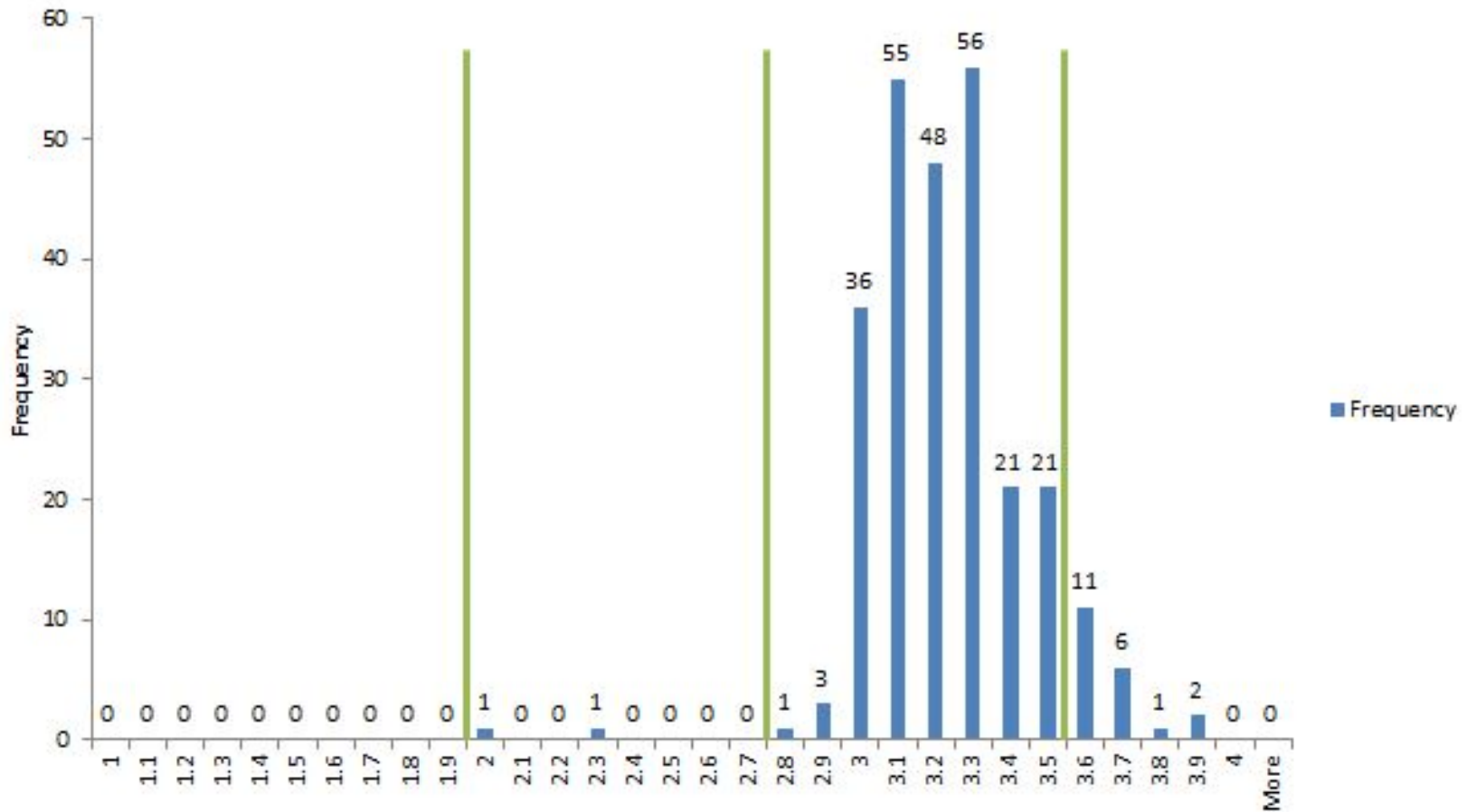
Distribution of Educational Audiologist Summative Scores



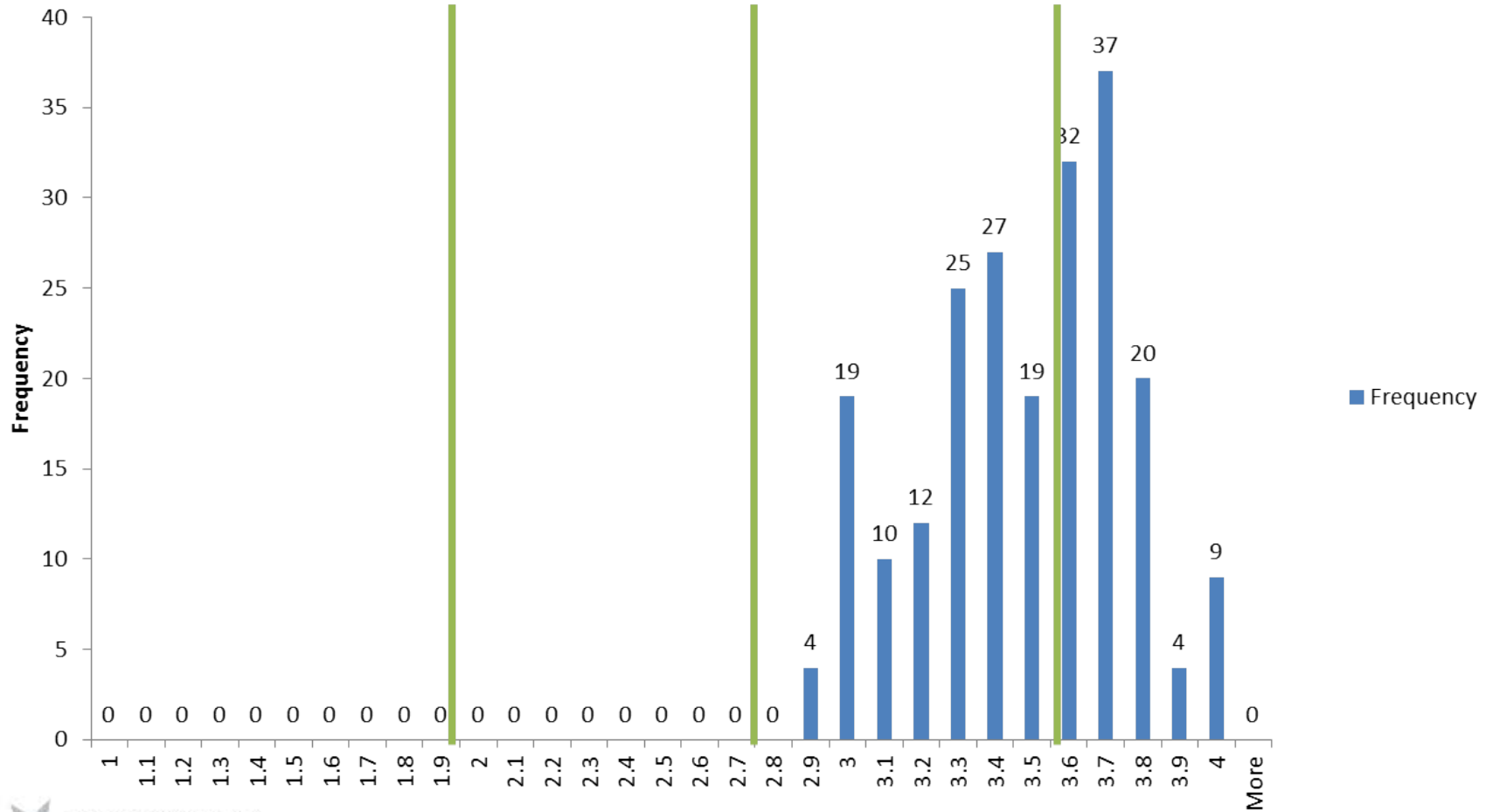
Distribution of School Counselor Summative Scores



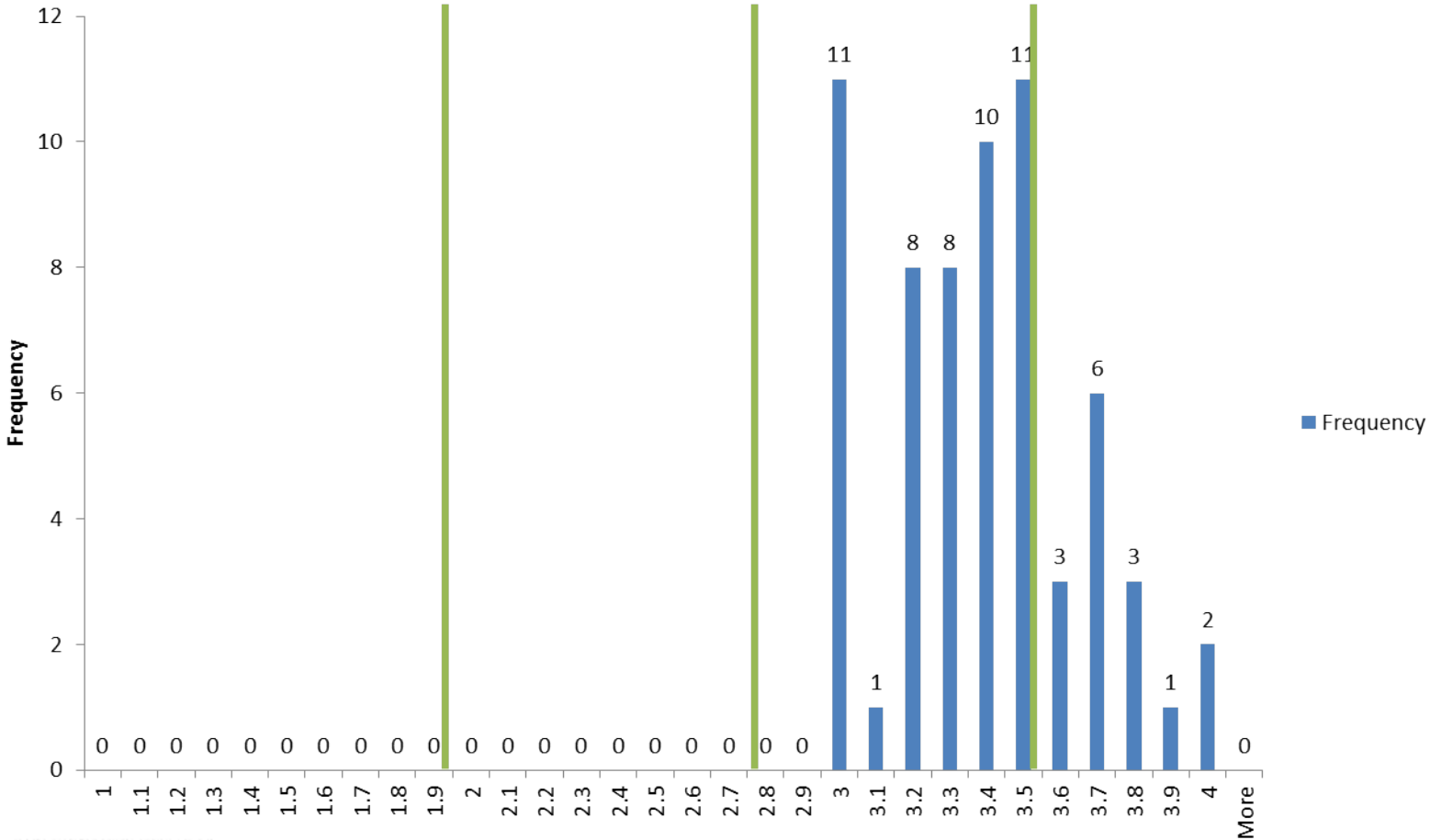
Distribution of School Nurse Summative Scores



Distribution of School Psychologist Summative Scores

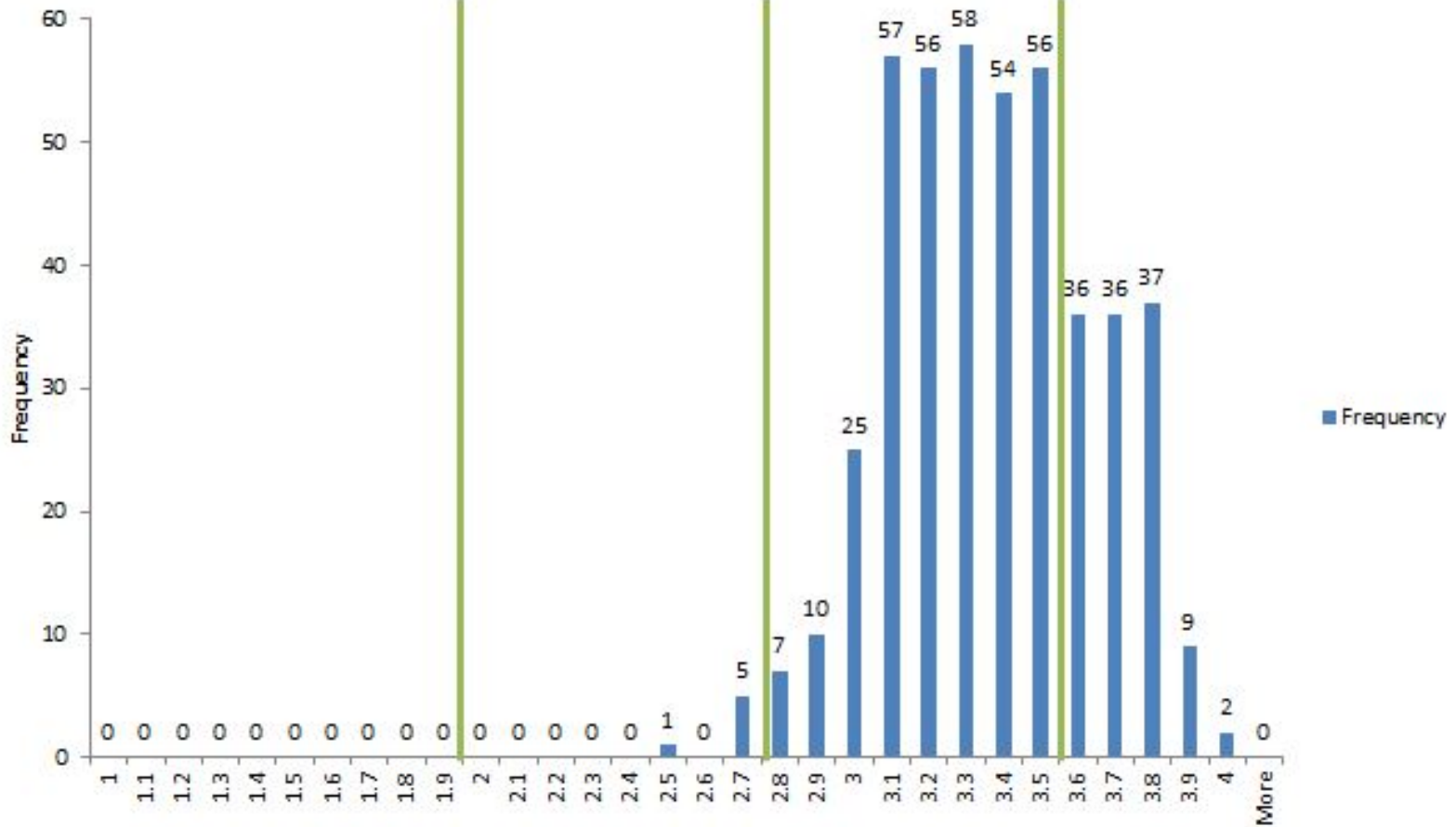


Distribution of School Social Worker Summative Scores

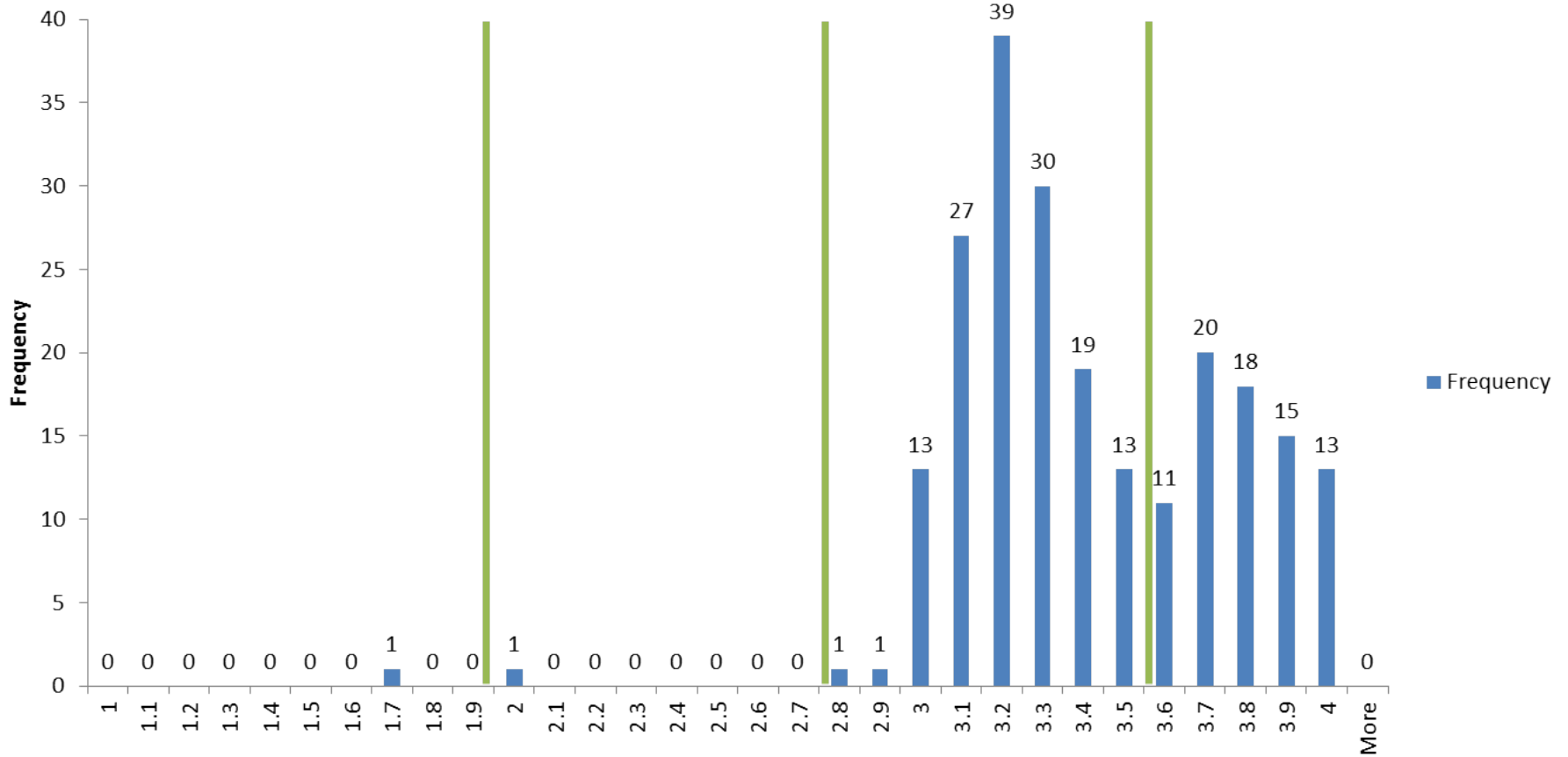


Vertical green lines indicate current score ranges

Distribution of Speech-Language Pathologist Summative Scores

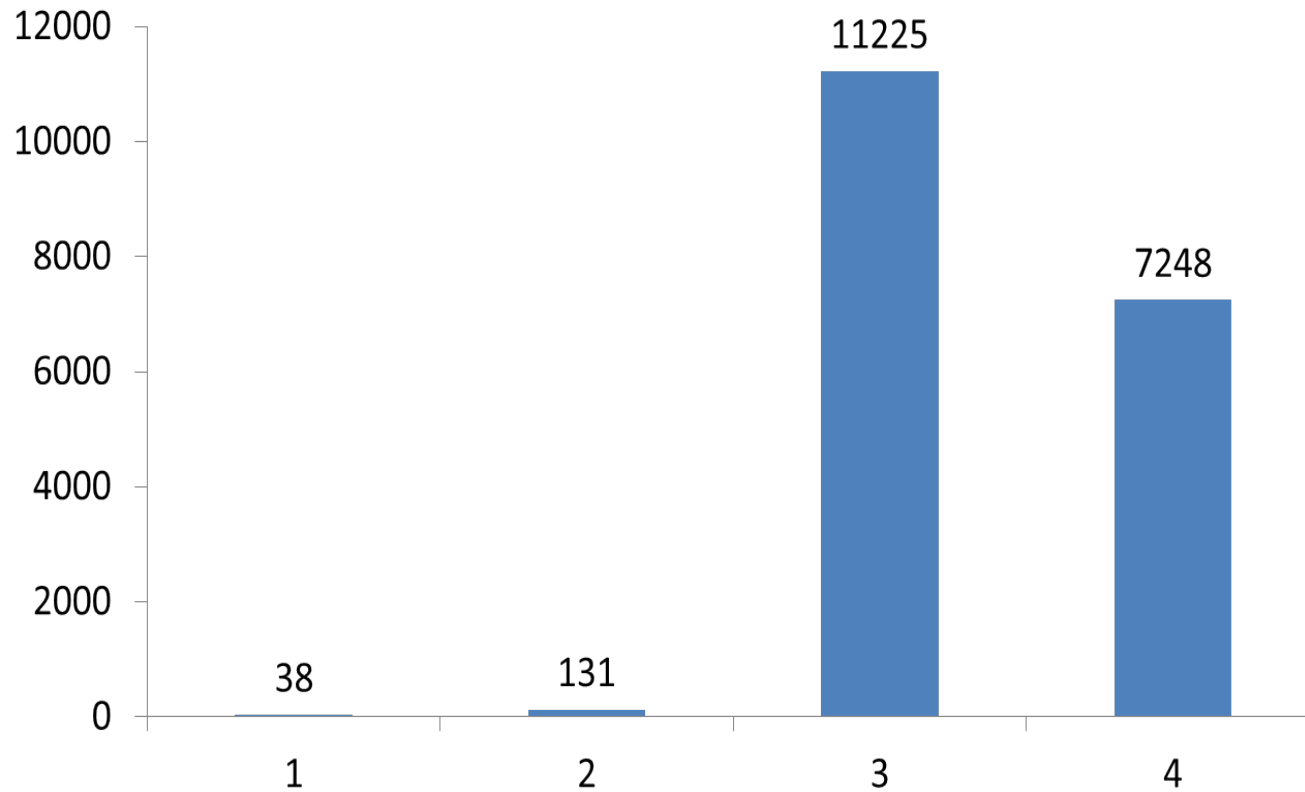


Distribution of Teacher-Librarian Summative Scores

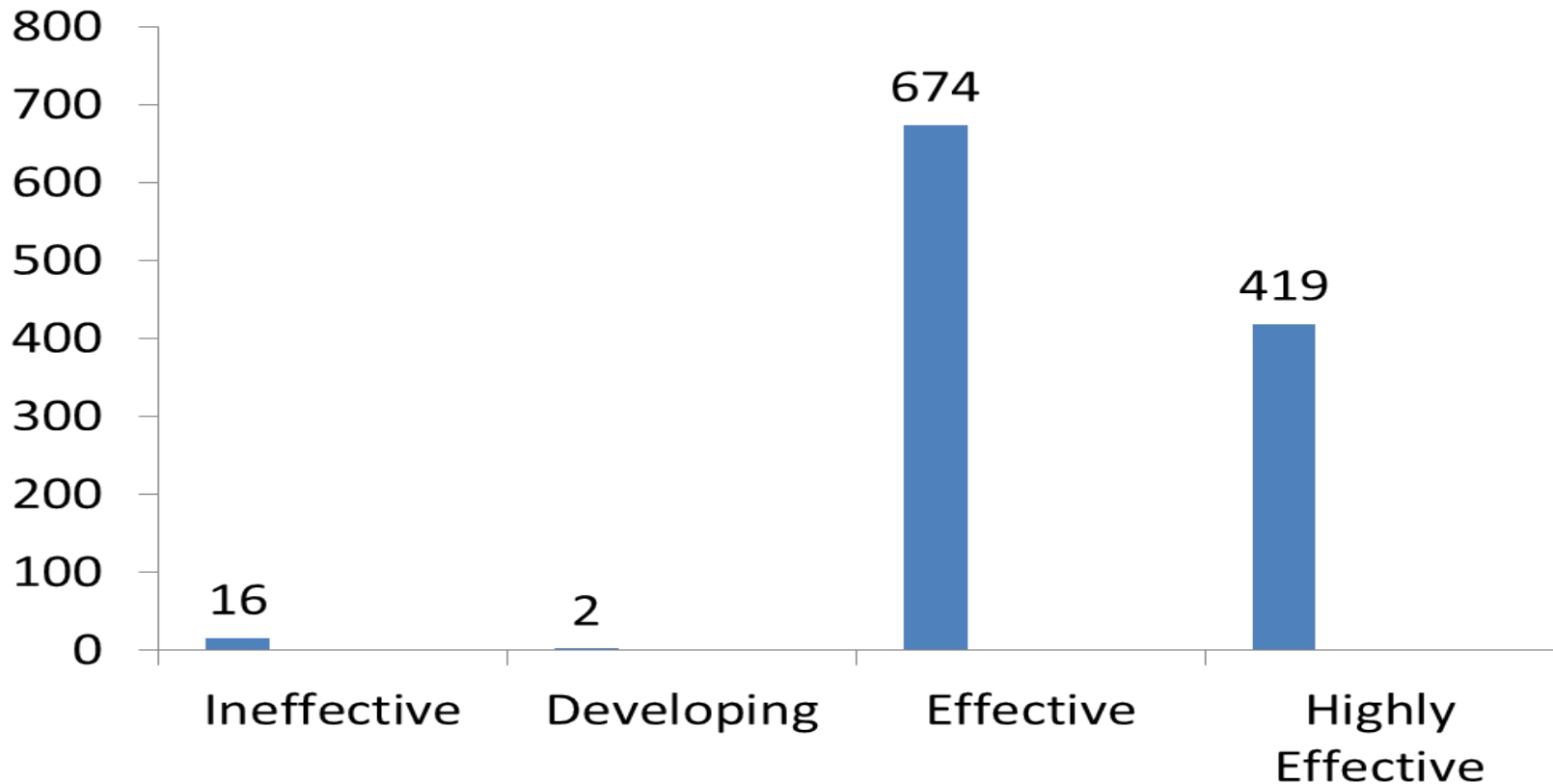


Data Used to Evaluate Pupil Growth (Student Learning Goals or SLGs)

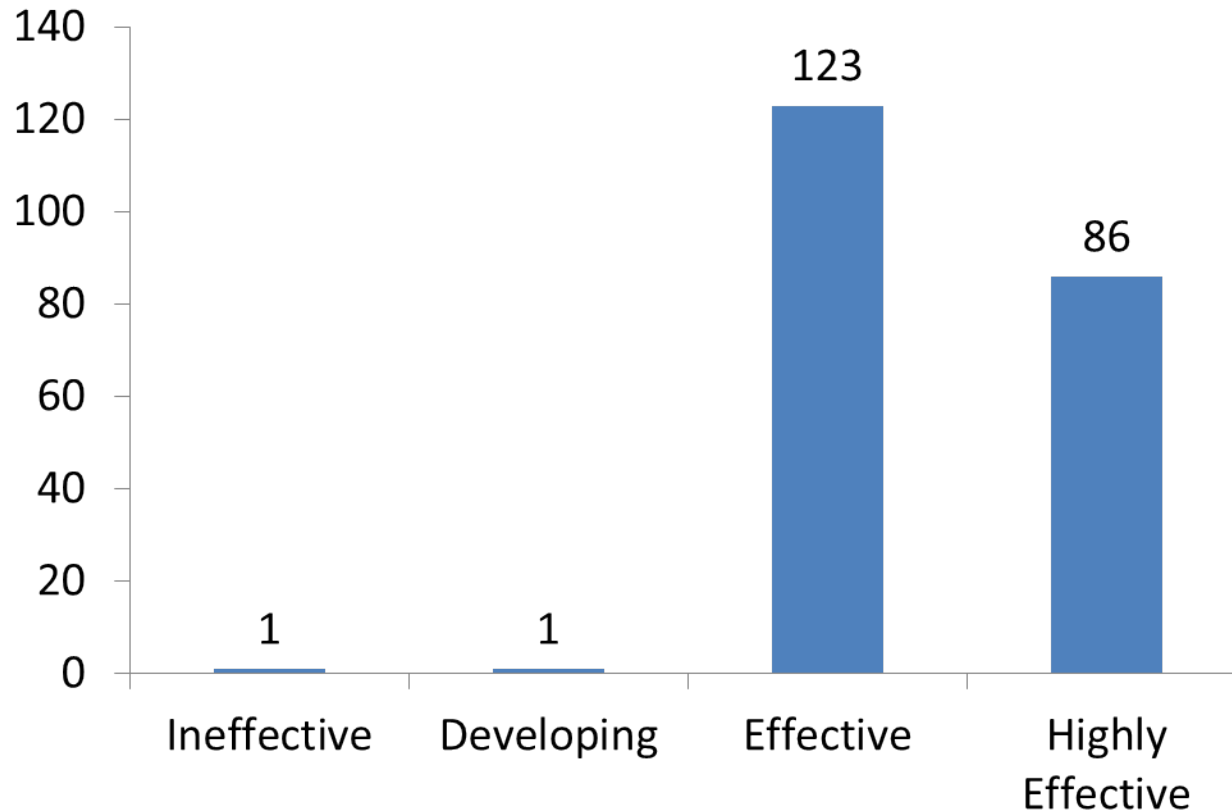
Distribution of Student Learning Goal Scores *Teachers*



Distribution of Student Learning Goal Scores *Administrators*



Distribution of Student Learning / Library Program Goal Scores



Teachers and Leaders Council (TLC) Recommendations

Teachers and Leaders Council

Score Range Recommendations for 2019-2020

Speech-Language Pathologists

Score Range	Final Rating
3.42 – 3.8	Highly Effective
2.66 – 3.41	Effective
1.83 – 2.65	Developing
1.0 – 1.82	Ineffective

Educational Audiologists, School Administrators, Counselors, Nurses, Psychologists, Social Workers, Teachers, and Teacher-Librarians

Score Range	Final Rating
3.6 – 4.0	Highly Effective
2.8 – 3.59	Effective
1.91 – 2.79	Developing
1.0 – 1.9	Ineffective

Notes:

- Highest SLP score receivable is 3.8 for 2019-2020 school year.
- Educational Audiologists are in the first full year of implementation.

TLC Recommendation for Possible State Board Motion

- The State Board of Education approves the recommendation made by the TLC for 2019-2020 NEPF score ranges to remain the same as in previous years to allow for comparability across multiple years.
- The State Board of Education approves the recommendation made by the TLC to use the extant score ranges for the Educational Audiologists during the 2019-2020 school year.

Staff Contact Information

Kristin L. Withey, Ph.D.

- Education Programs Professional
- Office of Educator Development & Support
- E: kwithey@doe.nv.gov
- T: (702)486-5759

Kathleen Galland-Collins

- Education Programs Supervisor
- Office of Educator Development & Support
- E: kgcollins@doe.nv.gov
- T: 702-668-4326