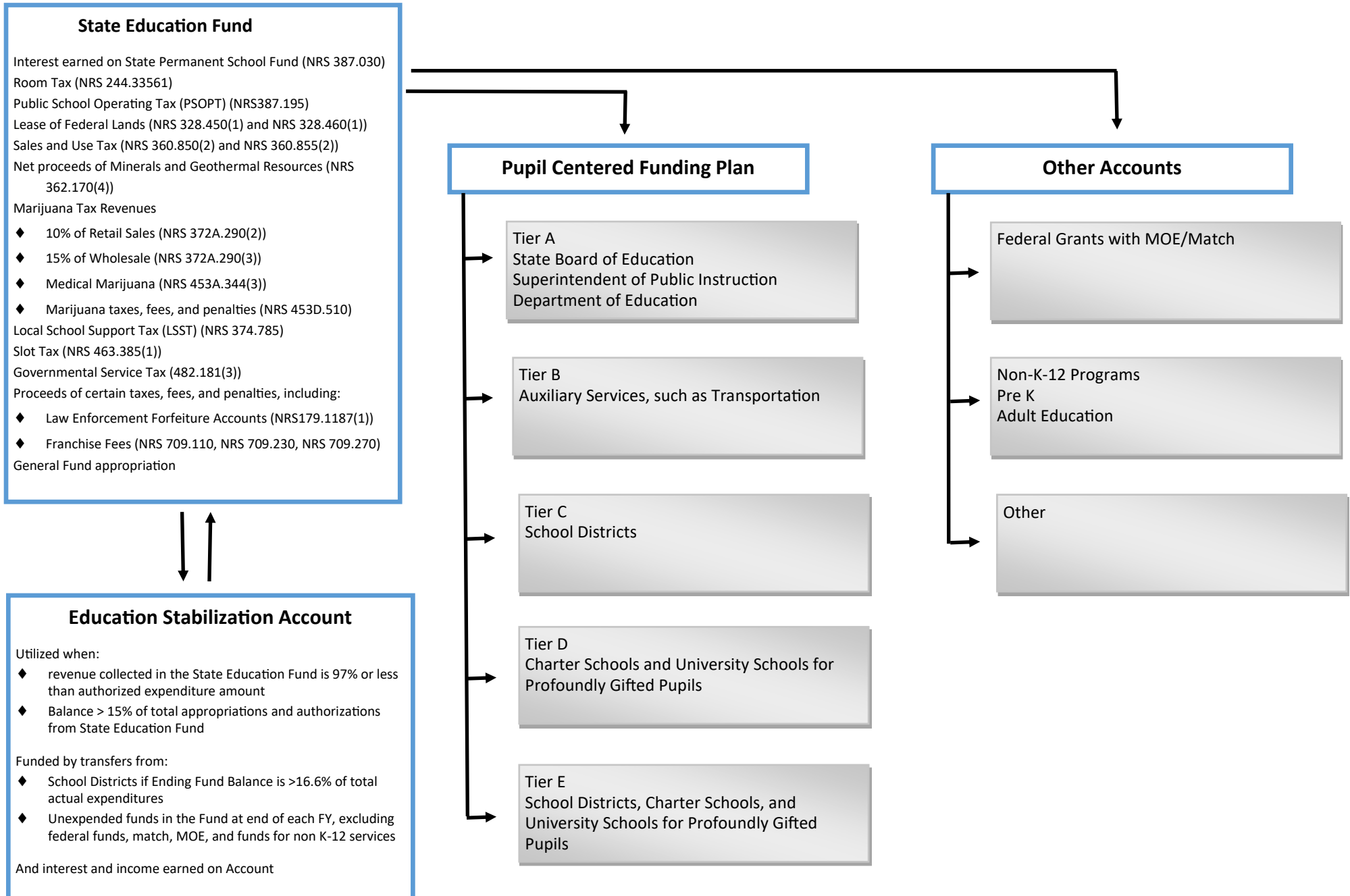
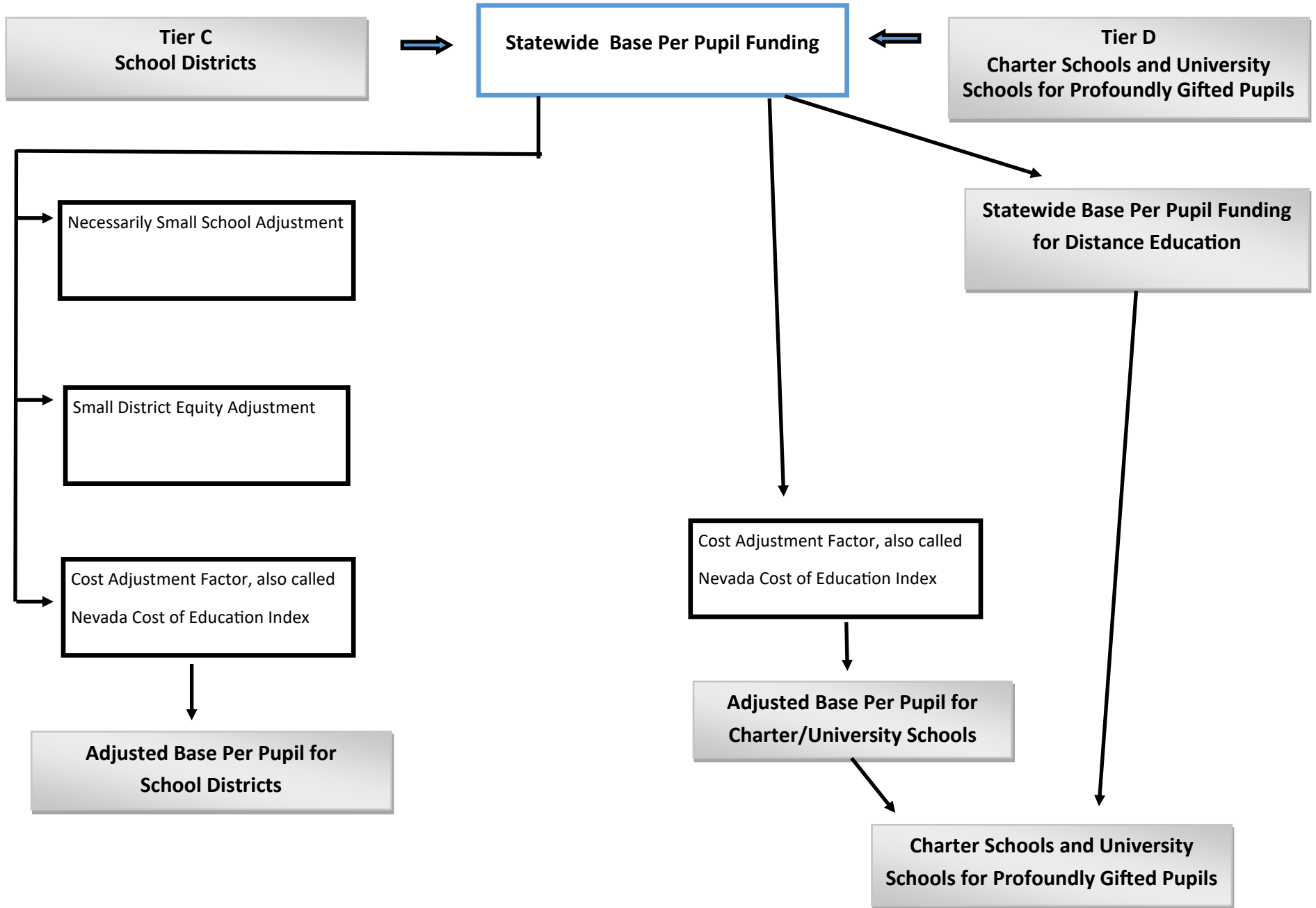


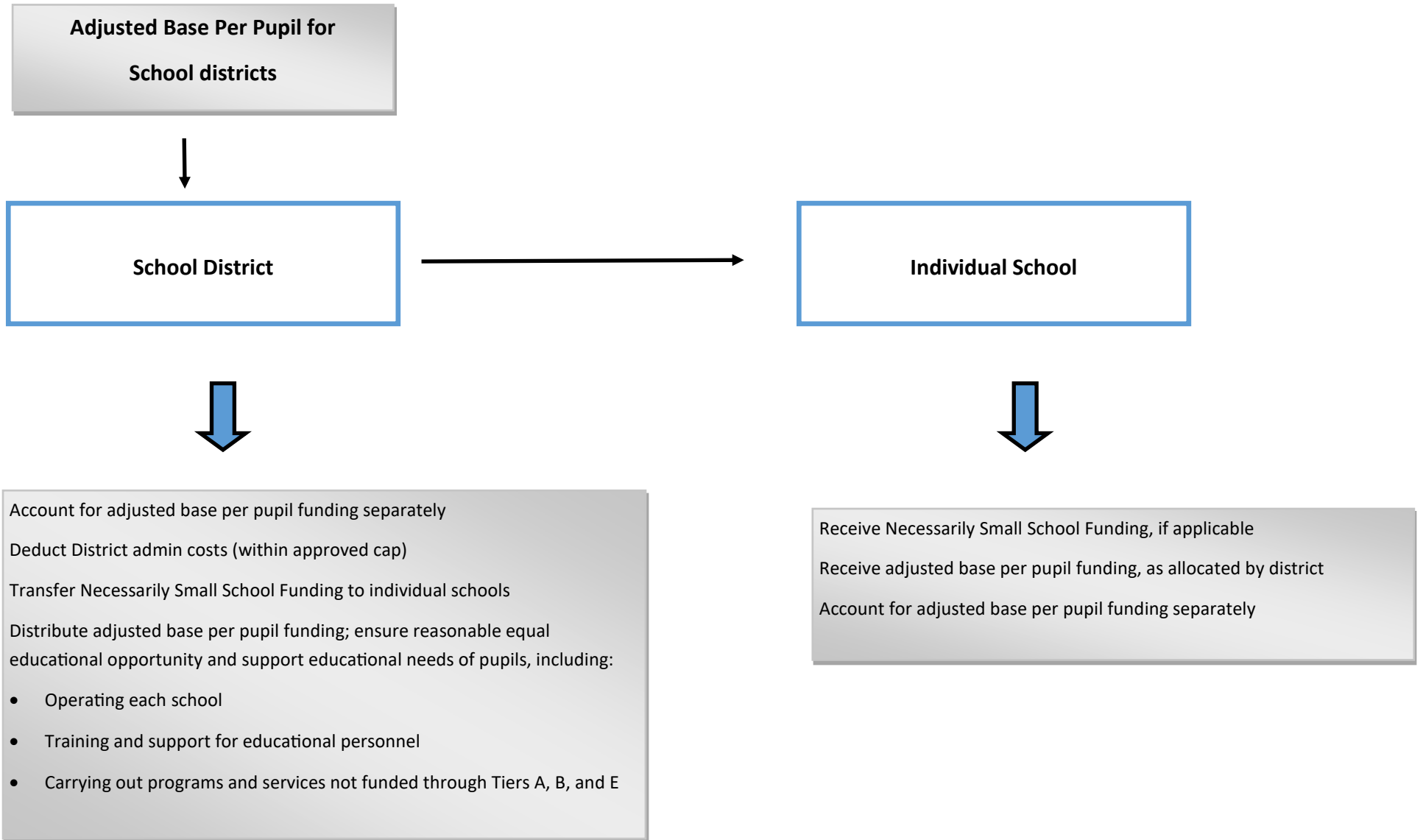
DRAFT
Pupil Centered Funding Plan
Senate Bill 543 (2019 Session)



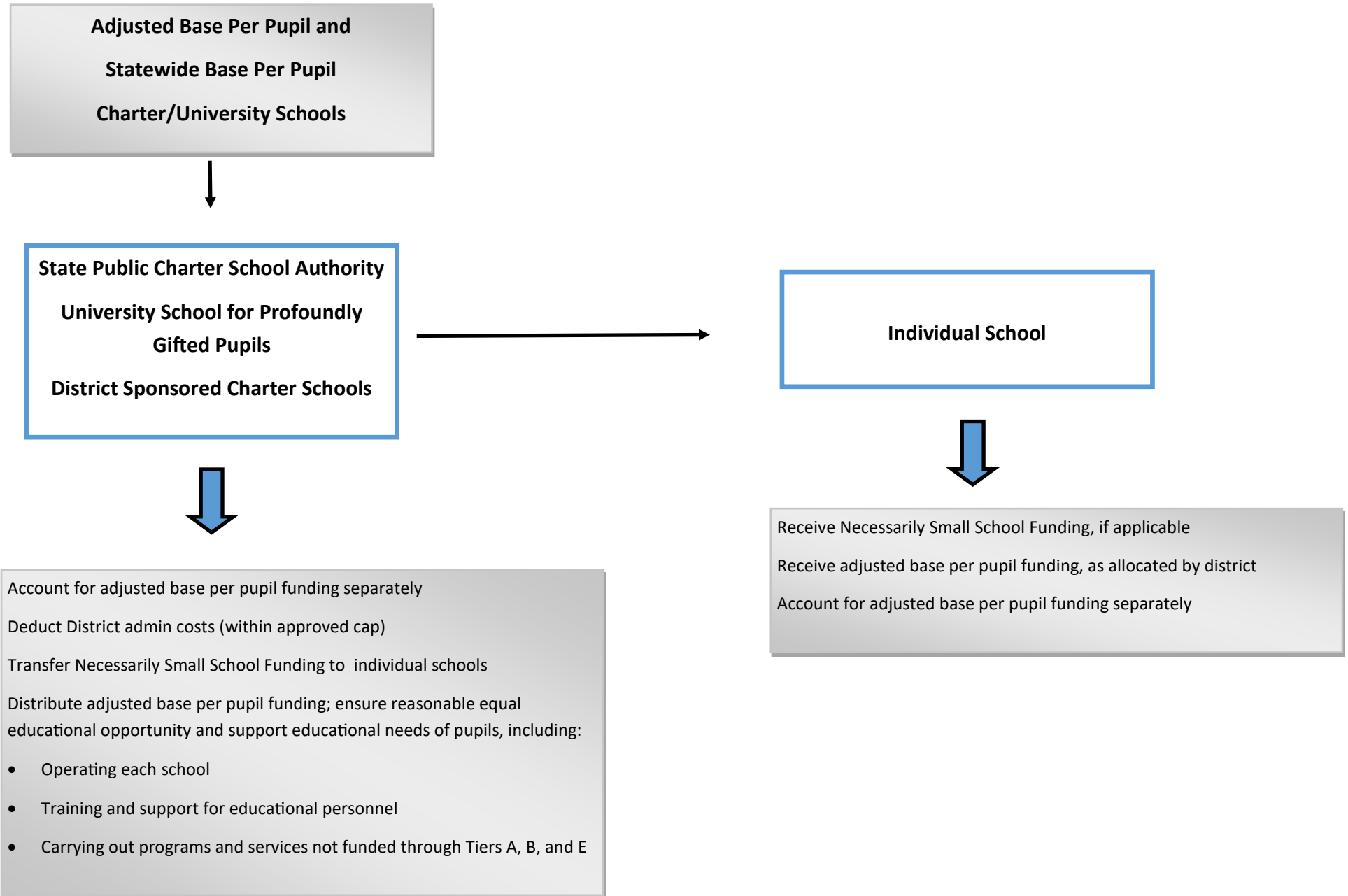
Allocation of Funding to School Districts, Charter Schools, and University Schools for Profoundly Gifted Pupils



Allocation of Funding from NDE to School District to Individual School



Allocation of Funding from NDE to Charter Schools and University Schools for Profoundly Gifted Students



DRAFT
**Allocation of Weighted Funding from
 NDE to School Districts/Charter Schools/University Schools for Profoundly Gifted Pupils
 to Individual Schools**

