

# Chronic Absenteeism

Presentation to the State Board of Education

December 12, 2019

Alberto Quintero, Education Programs Professional, Office of Parental  
Involvement and Family Engagement

Christy McGill, Director, Office for a Safe and Respectful Learning Environment

Peter Zutz, Director, Office of Assessment, Data & Accountability Management

# Chronic Absenteeism vs. Truancy

## TRUANCY

Counts only unexcused absences.  
Emphasizes compliance with school rules.  
Relies on legal and administrative solutions.

**VS.**

## CHRONIC ABSENCE

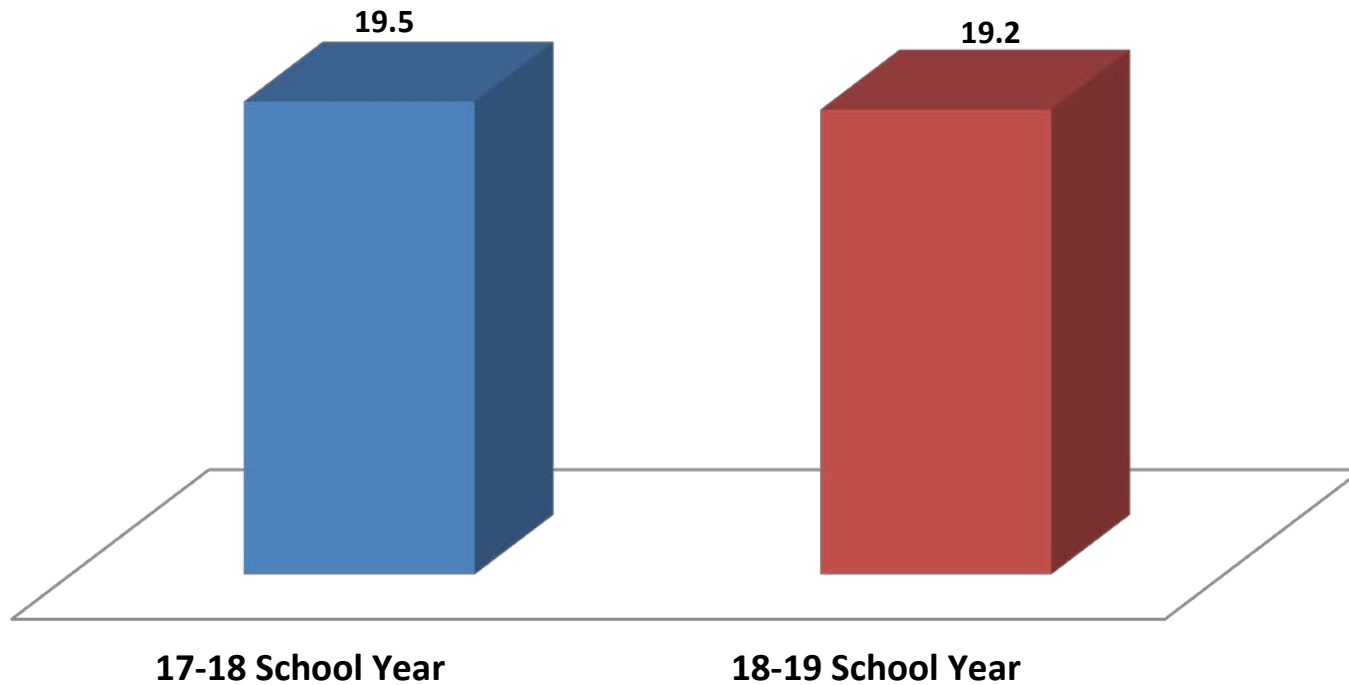
Counts all absences: excused,  
unexcused, and suspensions.  
Emphasizes academic impact of missed days.  
Uses community-based, positive strategies.

# State Definition of Chronic Absenteeism

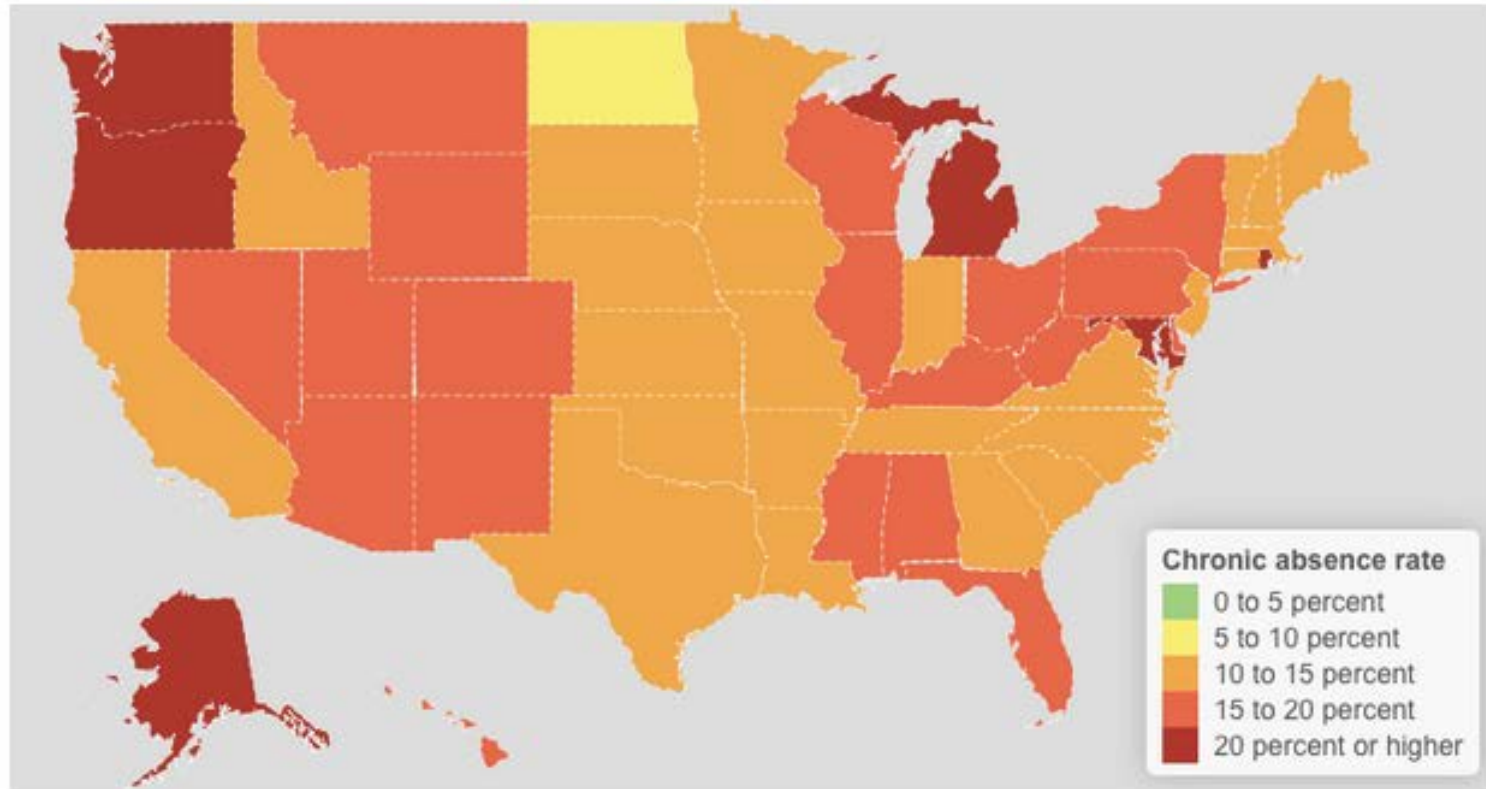
## In 2018, Nevada aligned its definition of chronic absenteeism to the federal definition:

- A student is absent if they are not physically on school grounds and are not participating in instruction or instruction-related activities at an approved off-grounds location for the school day.
- Chronically absent students include students who are absent for any reason (e.g., illness, suspension, the need to care for a family member), regardless of whether absences are excused or unexcused.
- Students who are absent 10% or more of their enrolled school days are considered chronically absent.

# Chronic Absenteeism Rate



# Chronic Absenteeism Across the Nation



# Accountability & Chronic Absenteeism

Only students enrolled for at least 91 days or more at any point during the school year are included in the Nevada Student Performance Framework (NSPF) Chronic Absenteeism measure.

- ***For example, students who are enrolled for the full school year (180 days) become chronically absent if they miss at least 18 or more days of school for any reason.***

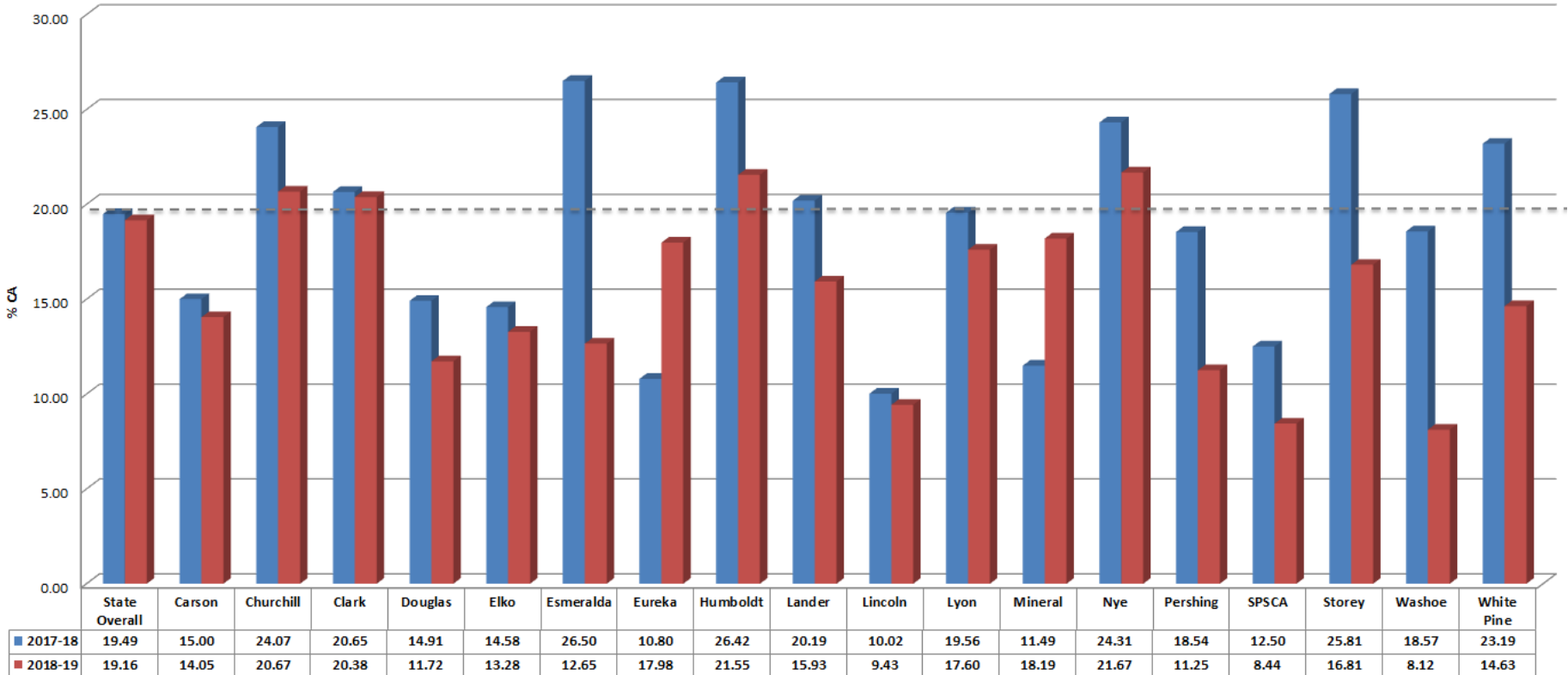
A school that reduces their rate of chronic absenteeism by at least 10% or more over the previous year's performance will earn a maximum of one (1) additional point, up to the total possible points for the Measure.

- ***For example, a school who had a prior chronic absenteeism rate of 20% must reach 18% or less in the current year to receive this incentive.***

# Chronic Absenteeism Rates by District

2017-18 vs. 2018-19

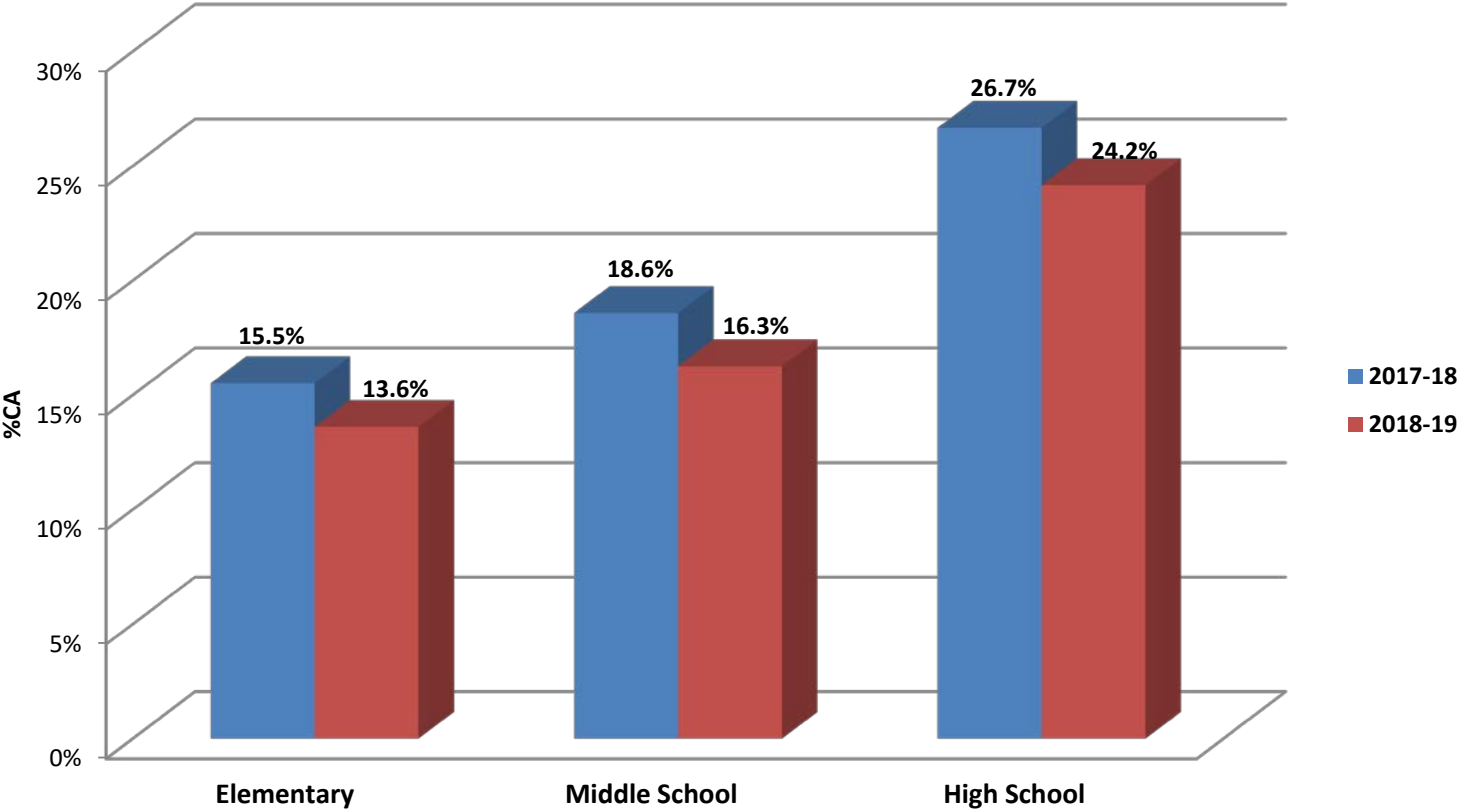
Nevada Chronic Absenteeism Rates by District



**Note:** The horizontal line in the graph denotes the State chronic absenteeism rate for the 18-19 school year.

Source: Nevada Department of Education

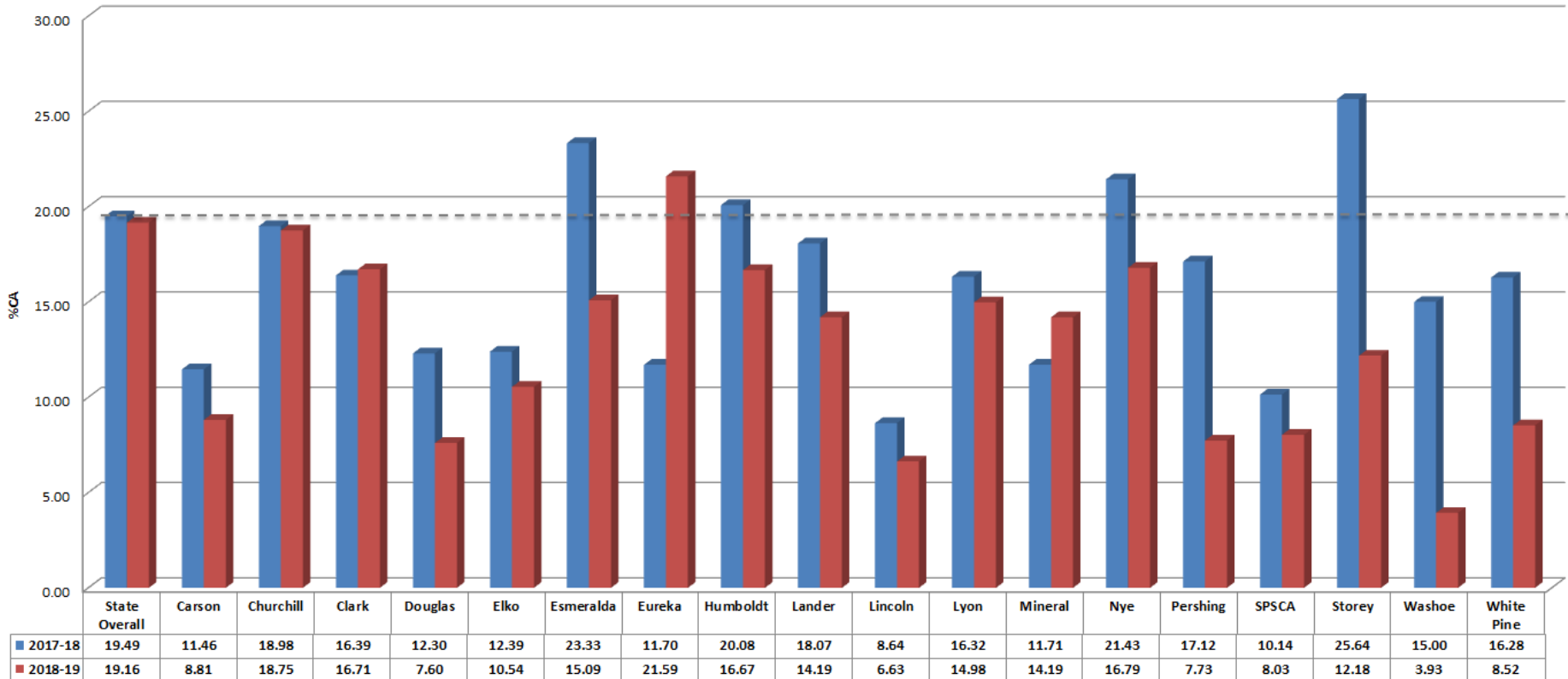
# Chronic Absenteeism Rates by School Level





# Chronic Absenteeism Elementary Schools

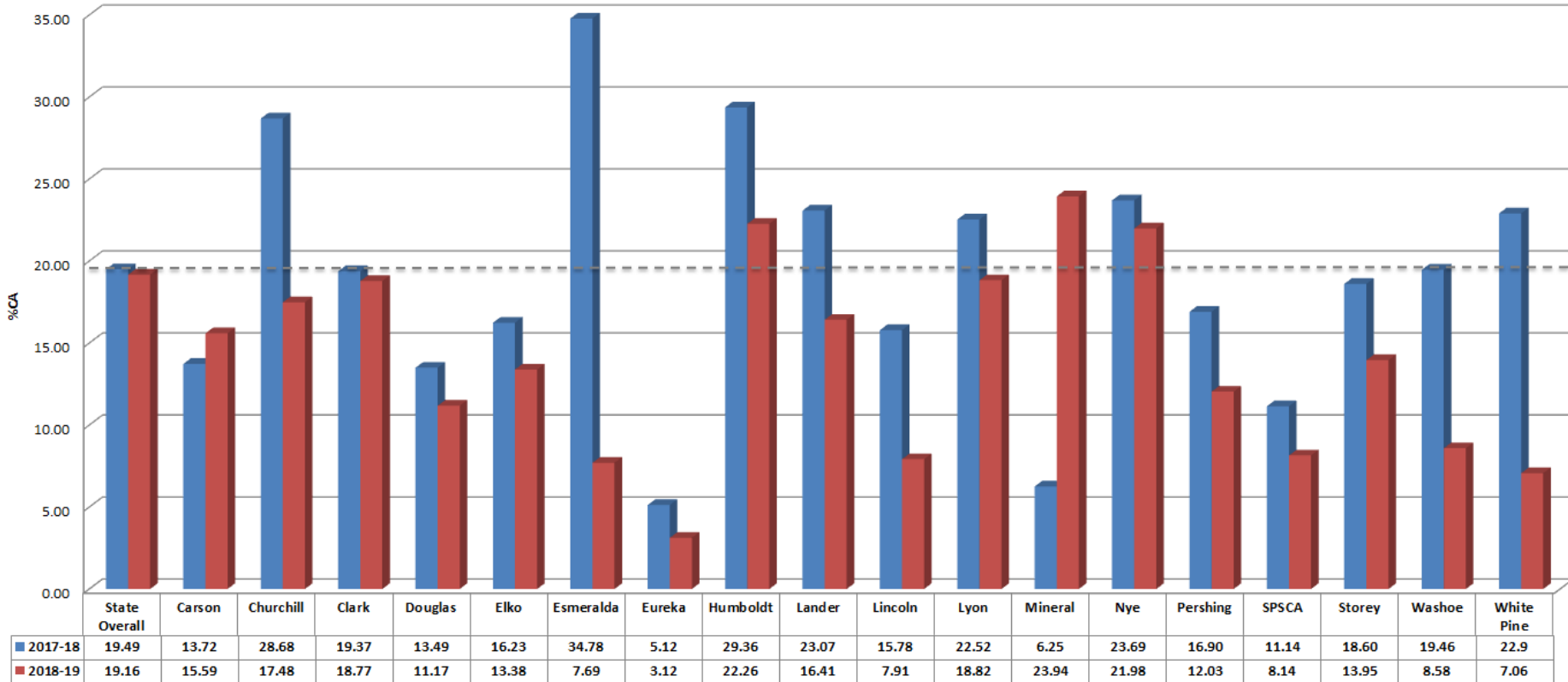
Elementary School Chronic Absenteeism by District



**Note:** The horizontal line in the graph denotes the State chronic absenteeism rate for the 18-19 school year.

# Chronic Absenteeism Middle Schools

Middle School Chronic Absenteeism by District

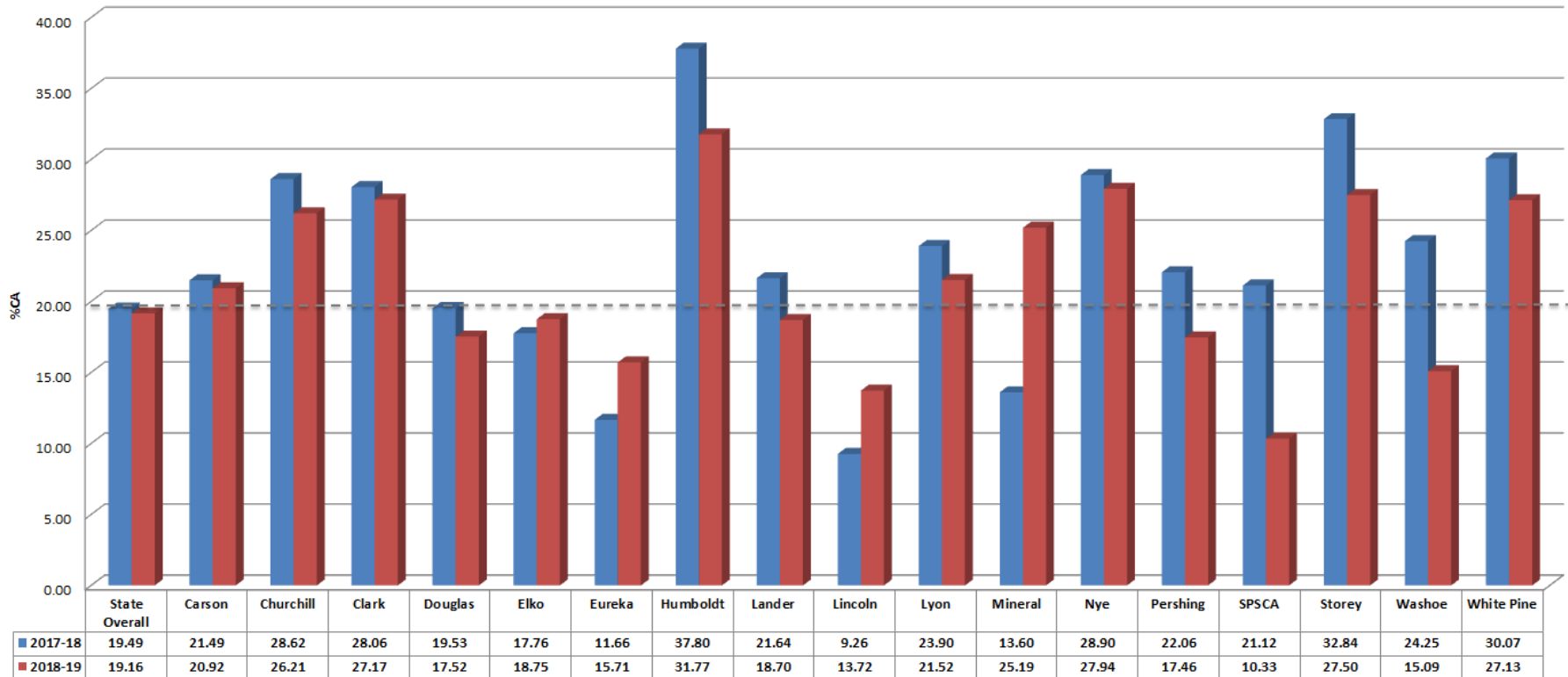


**Note:** The horizontal line in the graph denotes the State chronic absenteeism rate for the 18-19 school year.

Source: Nevada Department of Education

# Chronic Absenteeism High Schools

High School Chronic Absenteeism by District

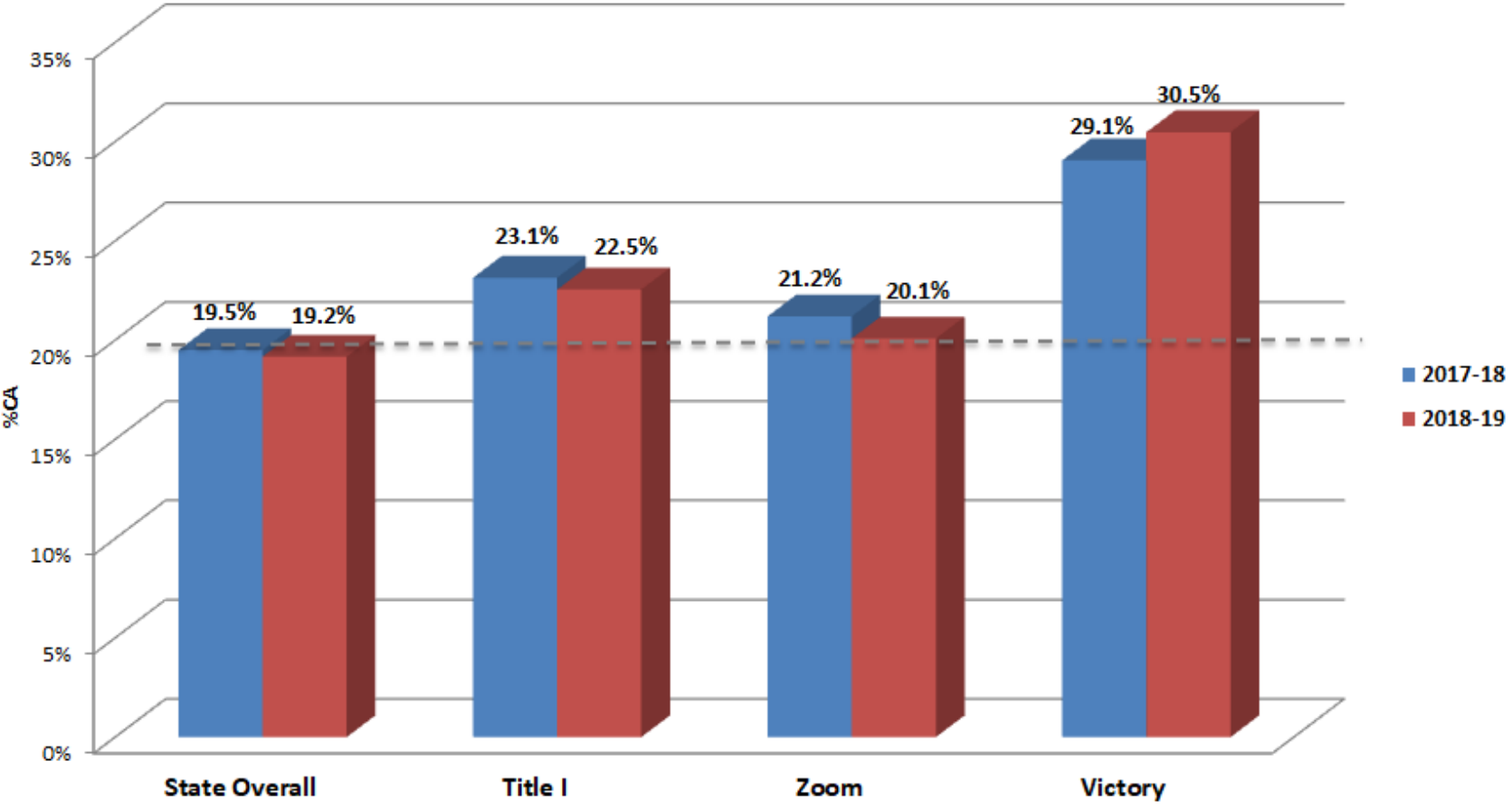


**Note:** The horizontal line in the graph denotes the State chronic absenteeism rate for the 18-19 school year.

Source: Nevada Department of Education

# Chronic Absenteeism in Different School Types

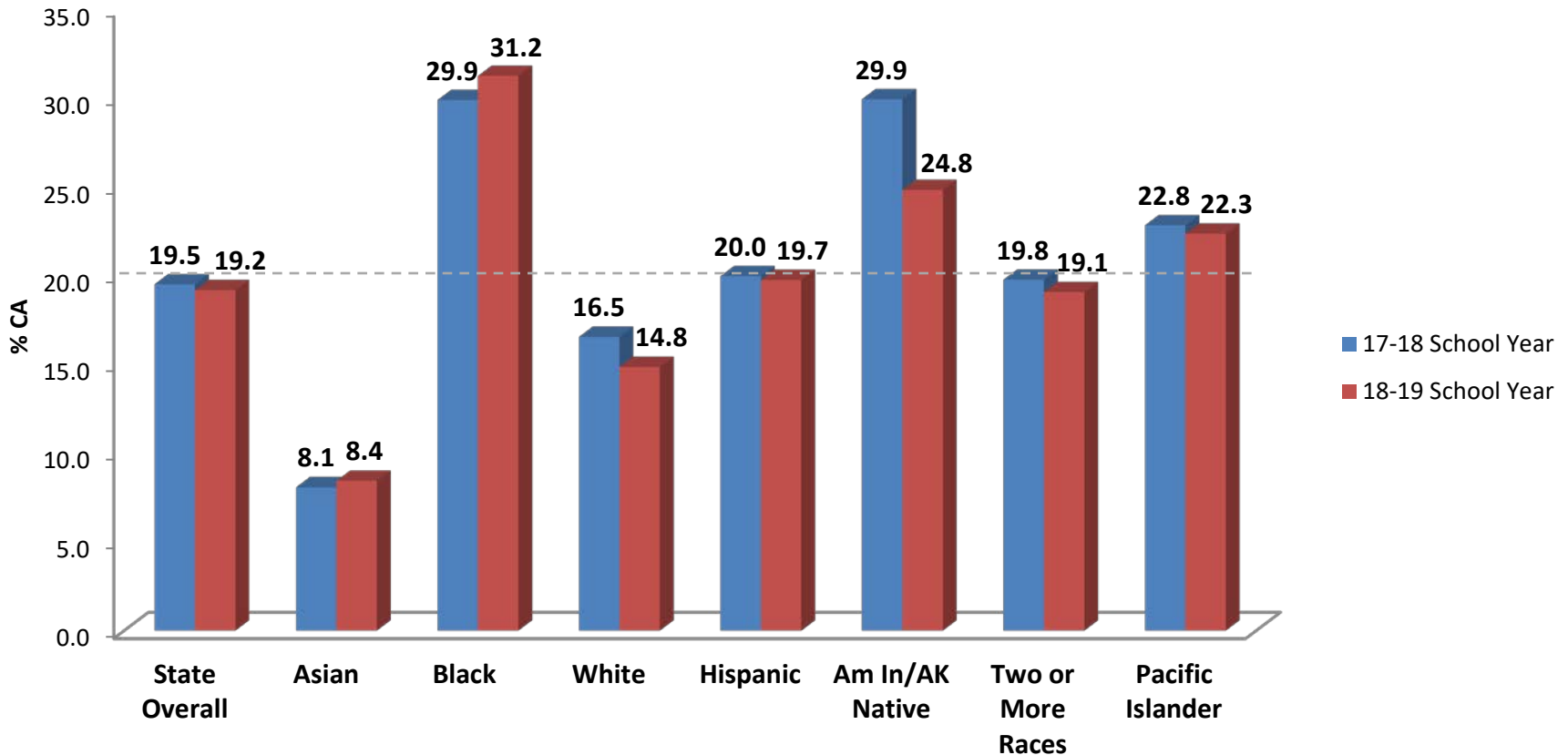
## Chronic Absenteeism by Title I, Zoom, and Victory Schools



**Note:** The horizontal line in the graph denotes the State chronic absenteeism rate for the 18-19 school year.

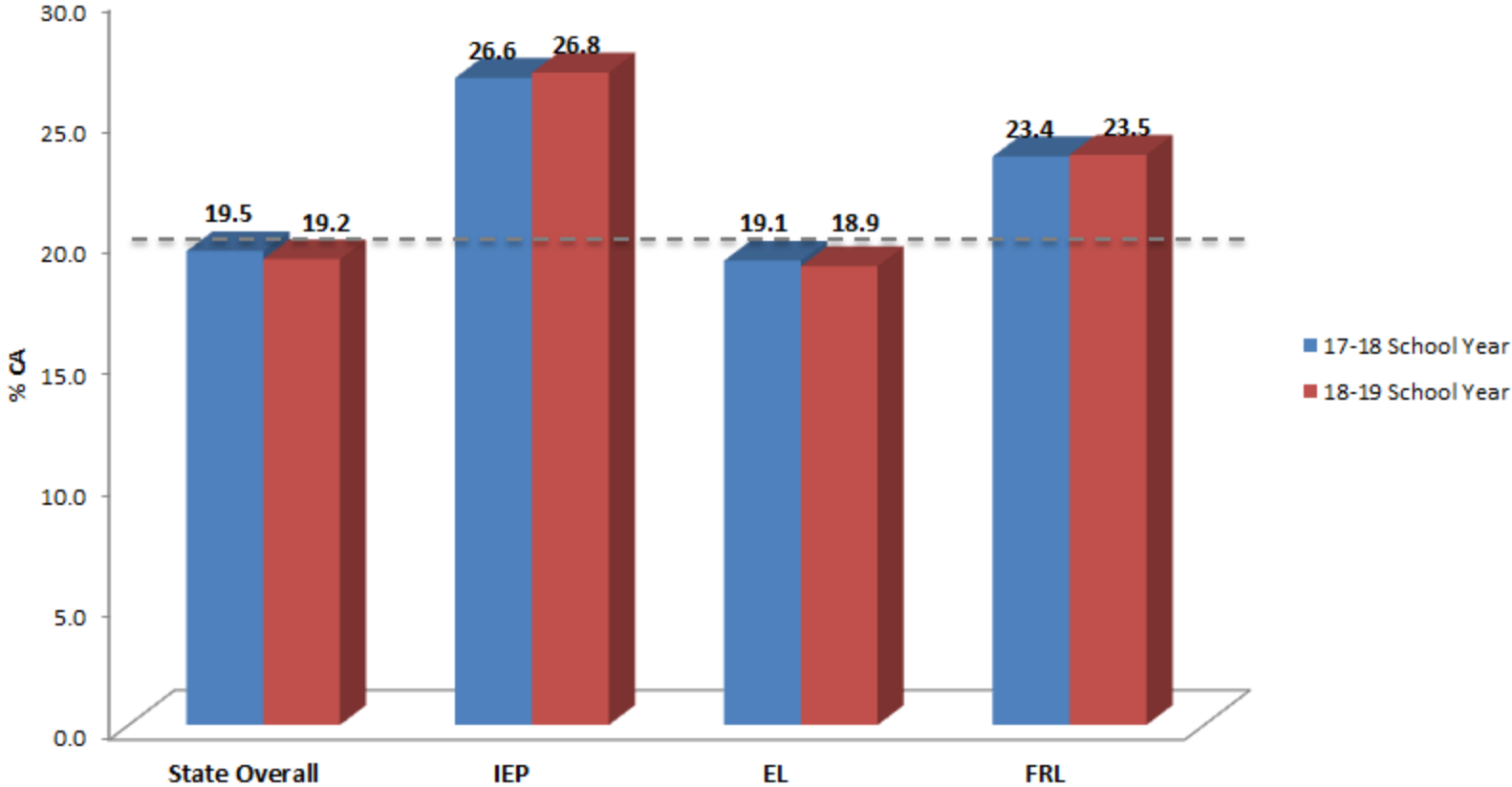
Source: Nevada Department of Education

# Chronic Absenteeism Rates by Race/Ethnicity



**Note:** The horizontal line in the graph denotes the State chronic absenteeism rate for the 18-19 school year.

# Chronic Absenteeism Rates by Student Groups



**Note:** The horizontal line in the graph denotes the State chronic absenteeism rate for the 18-19 school year.

# Why Chronic Absenteeism Matters

- On average, schools with higher chronic absenteeism rates have lower proficiency rates, and vice versa. This holds for students overall and for each group of students.<sup>1</sup>
- By 6<sup>th</sup> grade, chronic absenteeism is a leading indicator that a student will drop out of high school.<sup>2</sup>
- By 9<sup>th</sup> grade, chronic absenteeism becomes a better predictor of dropout rates than 8<sup>th</sup> grade test scores.<sup>3</sup>
- Classroom churn from too many absences affects all students, even those who attend regularly.<sup>4</sup>

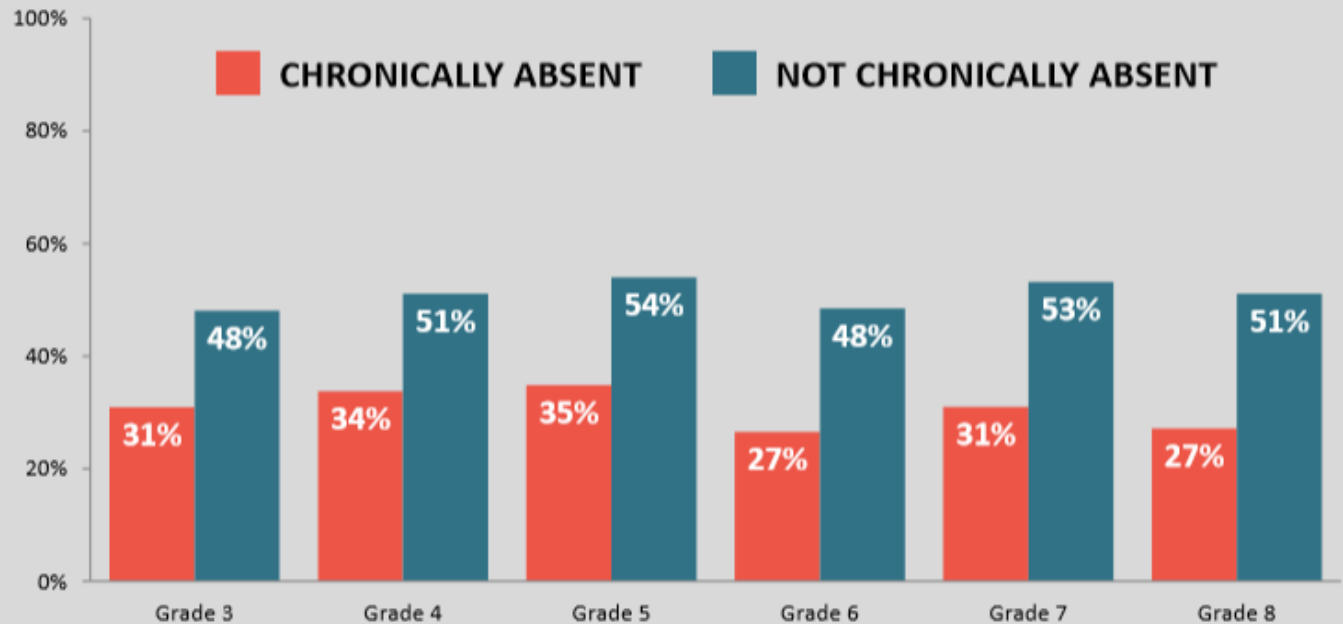
# Impact on Student Proficiency: ELA



## PROFICIENCY OR HIGHER IN ELA



This graph shows the Smarter Balanced proficiency rates of Nevada students who are chronically absent and not chronically absent in 2018/19. **Those with regular attendance are more proficient in ELA.**





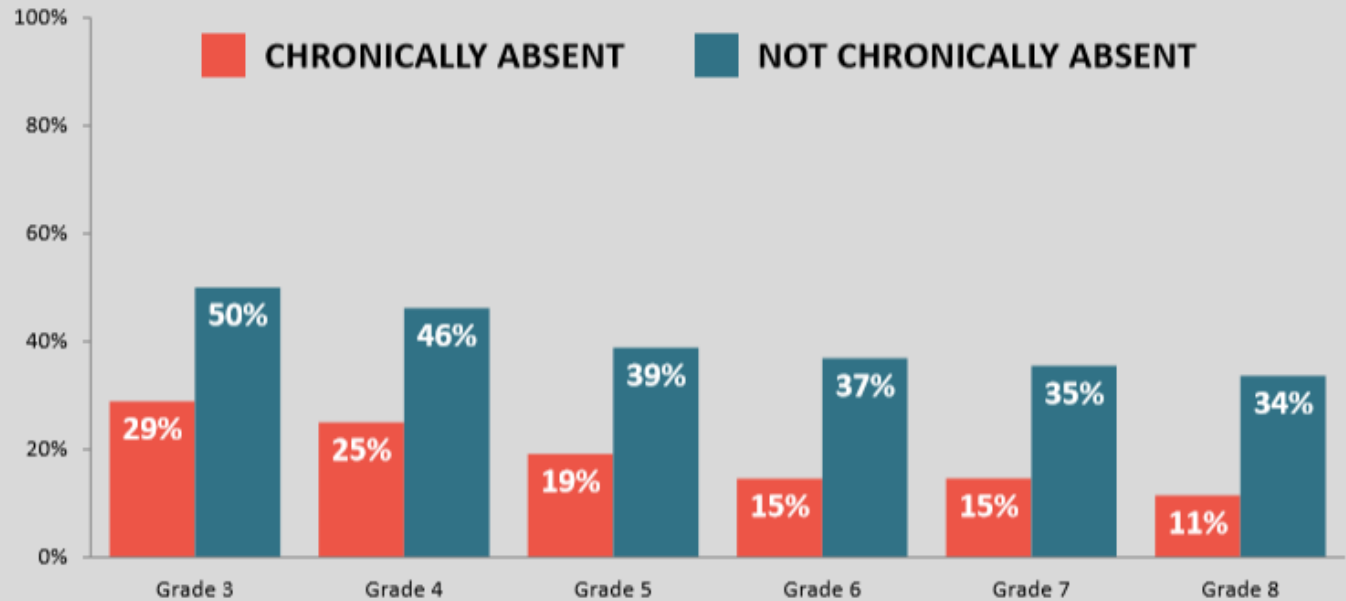
# Impact on Student Proficiency: Math



## PROFICIENCY OR HIGHER IN MATH



This graph shows the Smarter Balanced proficiency rates of Nevada students who are chronically absent and not chronically absent in 2018/19. **Those with regular attendance are more proficient in math.**



# Why are Students Chronically Absent?

## Barriers

- Illness, both chronic and acute
- Lack of health, mental health, vision, or dental care
- Trauma
- Unsafe path to/from school
- Poor Transportation
- Frequent moves or school changes
- Involvement with child welfare or juvenile justice systems

## Negative School Experiences

- Struggling academically or socially
- Bullying
- Suspensions and expulsions
- Negative attitudes of parents due to their own school experience
- Undiagnosed disability
- Lack of appropriate accommodations for disability

## Lack of Engagement

- Lack of culturally relevant, engaging instruction
- No meaningful relationships with adults in school
- Stronger ties with peers out of school than in school
- Unwelcoming school climate
- Failure to earn credits/no future plans
- Many teacher absences or long-term substitutes

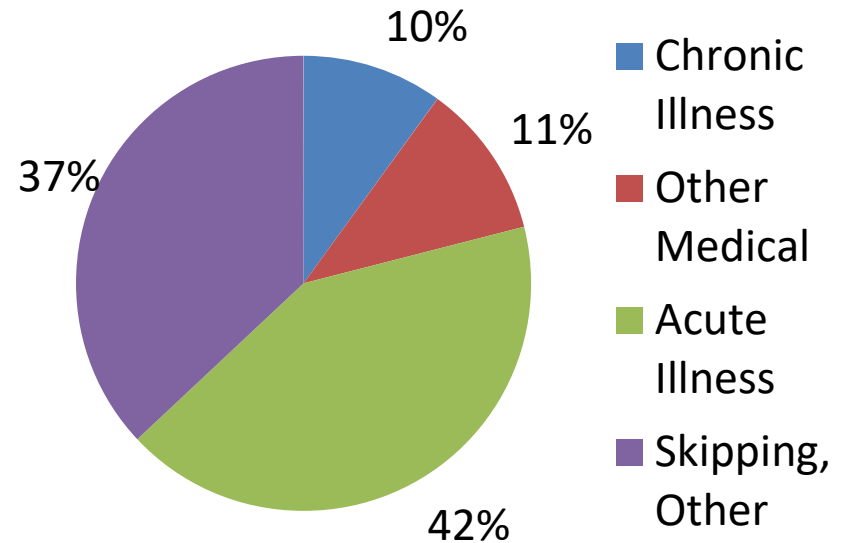
## Misconceptions

- Absences are only a problem if they are unexcused
- Missing 2 days per month doesn't affect learning
- Sporadic absences aren't a problem
- Attendance only matters in the older grades

# School Absence Reasons

- U.S. students miss more than 250 million school days per year.
- Most lost days are due to health-related reasons.

School Absence Reasons



# NDE Support for Schools and Districts

NDE works to support schools and districts in addressing chronic absenteeism by:

- Ensuring data is high-quality and consistent
- Ensuring that school report cards are easy to understand so there is transparency around chronic absenteeism in communities
- Offering guidance and materials on effective strategies for reducing chronic absence

# School and Family Resources

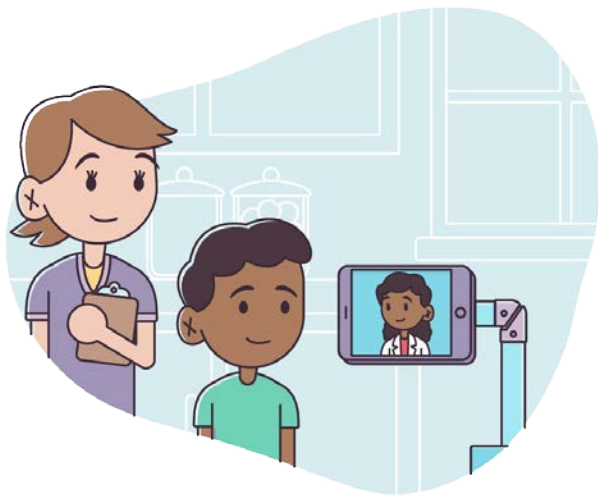
[Attendance Works](#) is a national and state-level initiative whose mission is to advance student success and help close equity gaps by reducing chronic absenteeism.

Their website contains free tools and resources on:

- Data analysis;
- Professional development;
- Public messaging;
- Peer learning;
- Case studies; and
- Surveys and focus groups.

# New Pilot: School Based Tele-Health

Hazel is partnering with schools to keep kids healthy and ready to learn. Hazel Health:

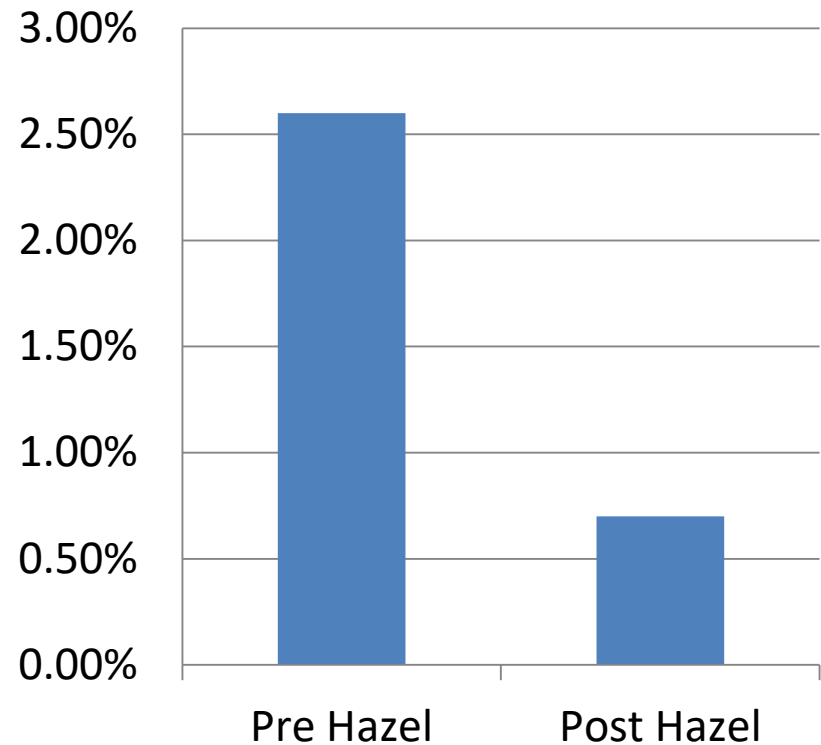


- Operates virtual healthcare clinics in schools at no cost to students
- Provides unmatched healthcare access, without an appointment and regardless of insurance or immigration status
- Has a unique program that drives high engagement, promotes schools as an effective care setting, improves student health and attendance and lowers costly ER and urgent care visits

# Results of Hazel Health in Florida

- 60%+ of all school absences are related to physical health. Illnesses keep kids out of the classroom and negatively impact instructional time.
- Hazel's program makes a significant impact on lowering illness-related absences – increasing instructional minutes.
- This translates to 3.4 fewer missed days per school year.

Illness Related Absence Rate



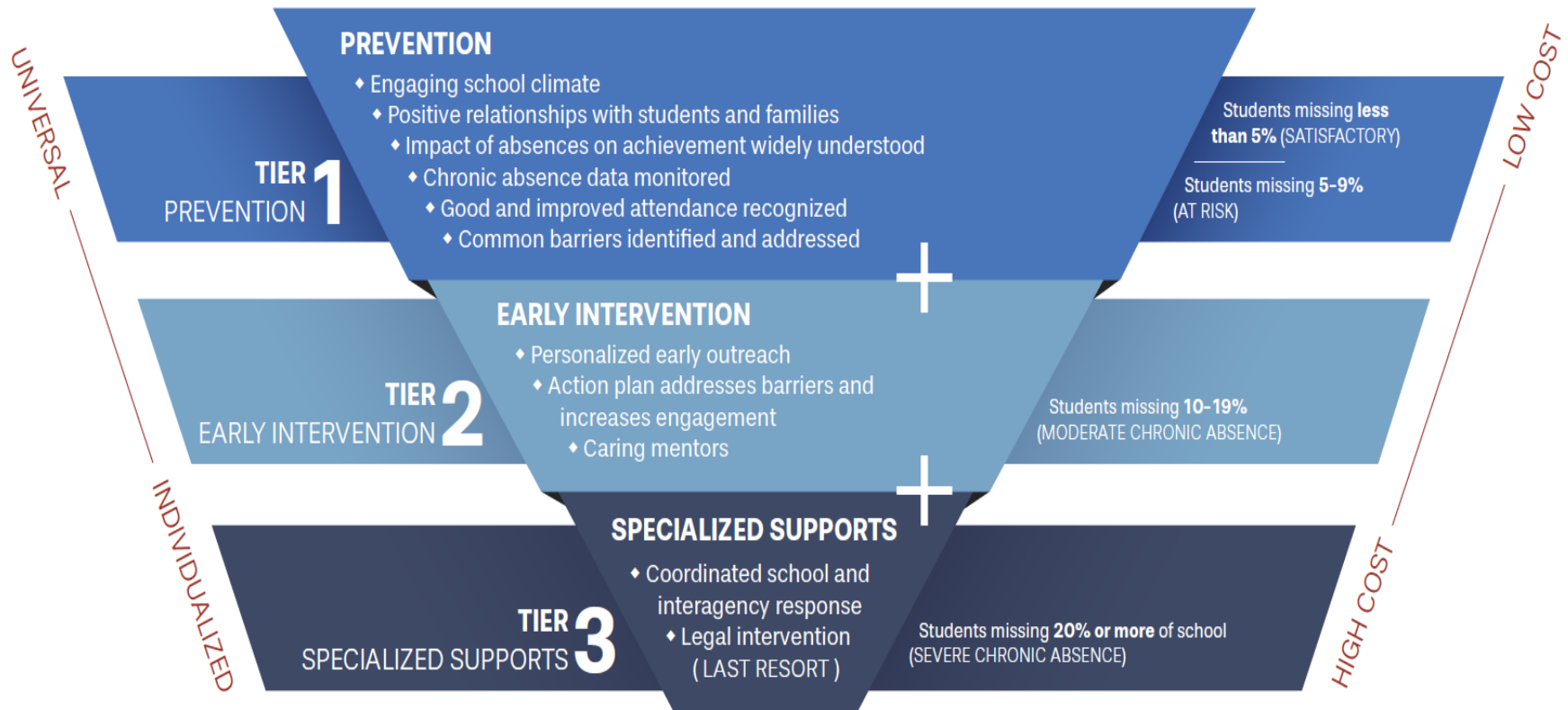
# Success Stories

## Humboldt: (Superintendent Jensen)

“We have started a system that works with parents and students at the elementary level to address absenteeism. As students begin to demonstrate a series of absences, the parent is asked to attend a committee meeting that specifically reflects on the students attendance and seeks to address methods to assist parents in ensuring students make it to school [at the elementary level, parents / guardians are the main decision-maker with regard to attendance]. Parents participate and engage with this committee while attendance is tracked, and improvement is celebrated. We saw tremendous growth as a result last year and will be continuing for the upcoming year.”



# A Need for a Multi-Tiered Approach



# Questions

Alberto Quintero, Education Programs Professional, Office of Parental Involvement and Family Engagement

[AlbertoQuintero@doe.nv.gov](mailto:AlbertoQuintero@doe.nv.gov)

Christy McGill, Director, Office for a Safe and Respectful Learning Environment

[CMcGill@doe.nv.gov](mailto:CMcGill@doe.nv.gov)

Peter Zutz, Director, Office of Assessment, Data & Accountability Management

[PZutz@doe.nv.gov](mailto:PZutz@doe.nv.gov)