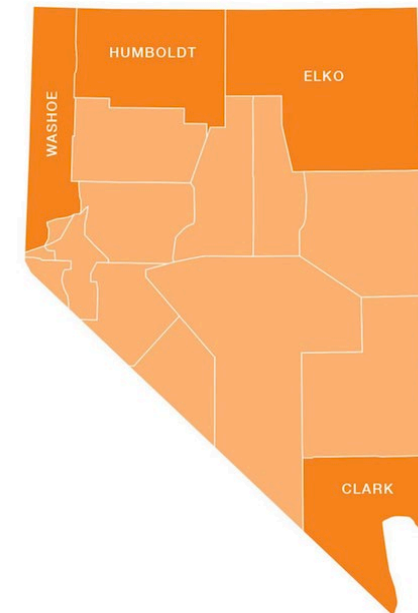


Communities In Schools of Nevada

*Proudly serving 92 Title I and high-needs schools in the Clark,
Elko, Humboldt and Washoe County school districts*

Serving Students Across Nevada

- Almost **two decades of statewide impact** for Nevada's students and families.
- **Fifth largest office of the nation's leading evidence-based dropout prevention organization** operating in 26 states and the District of Columbia. CIS of Nevada is its own accredited independent nonprofit corporation.
- **Currently in 92 elementary, middle and high schools, representing four districts** — Clark, Elko, Humboldt & Washoe — with **140+ employees** serving **close to 90,000 students** and providing **case management to 5,000 - 6,000 students**.
 - **SNV – Las Vegas, North Las Vegas & Henderson**
 - 65 Schools (42 ES; 11 MS; 12 HS)
 - **WNV – Reno, Sparks, Wadsworth & Sun Valley**
 - 13 Schools (7 ES; 4 MS; 2 HS)
 - **NENV – Elko, Spring Creek, West Wendover & Winnemucca**
 - 14 Schools (8 ES; 3 MS; 3 HS)



Our Approach



ACADEMIC ASSISTANCE



ENRICHMENT



BASIC NEEDS



FAMILY ENGAGEMENT



BEHAVIORAL INTERVENTIONS



LIFE SKILLS



COLLEGE & CAREER PREP



MENTAL HEALTH



COMMUNITY & SERVICE LEARNING



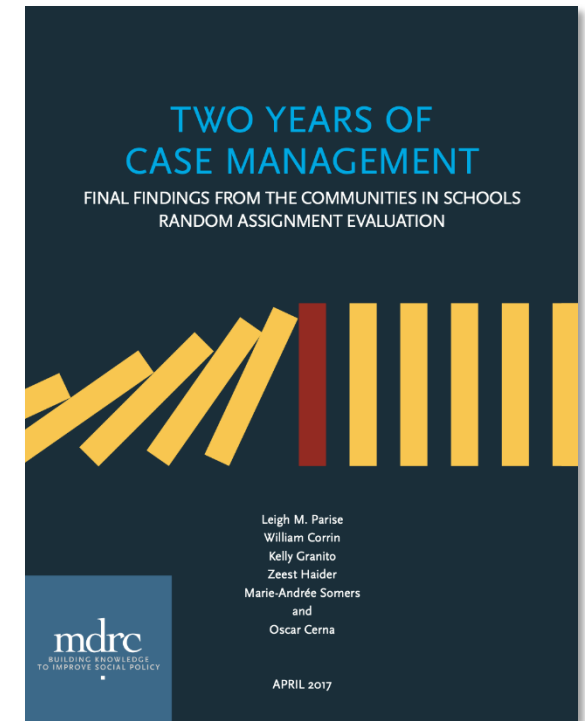
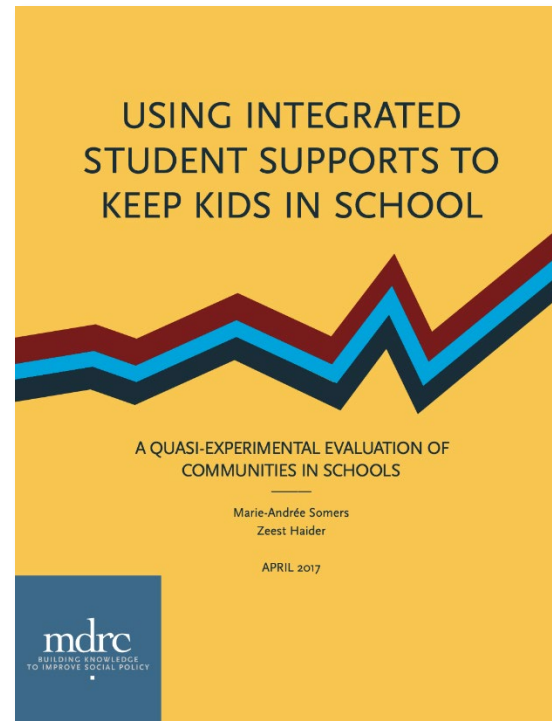
PHYSICAL HEALTH

Evidence-Based & Independently Verified

CIS's **Integrated Student Supports Model** meets the Every Student Succeeds Act (ESSA) tier of evidence levels 1, 2, 3 and 4.

The model has also been found, by UNLV and the Nevada Dept. of Education, to meet subcategory intervention needs in Nevada, which include:

- *Equity*
- *Family Engagement*
- *Homeless and/or Foster Care Youth*
- *Mentoring*
- *Neglected and/or Delinquent Youth*
- *Needs Assessment*
- *Progress Monitoring*
- *School Improvement*
- *School Safety and Climate*
- *Social Emotional Learning*

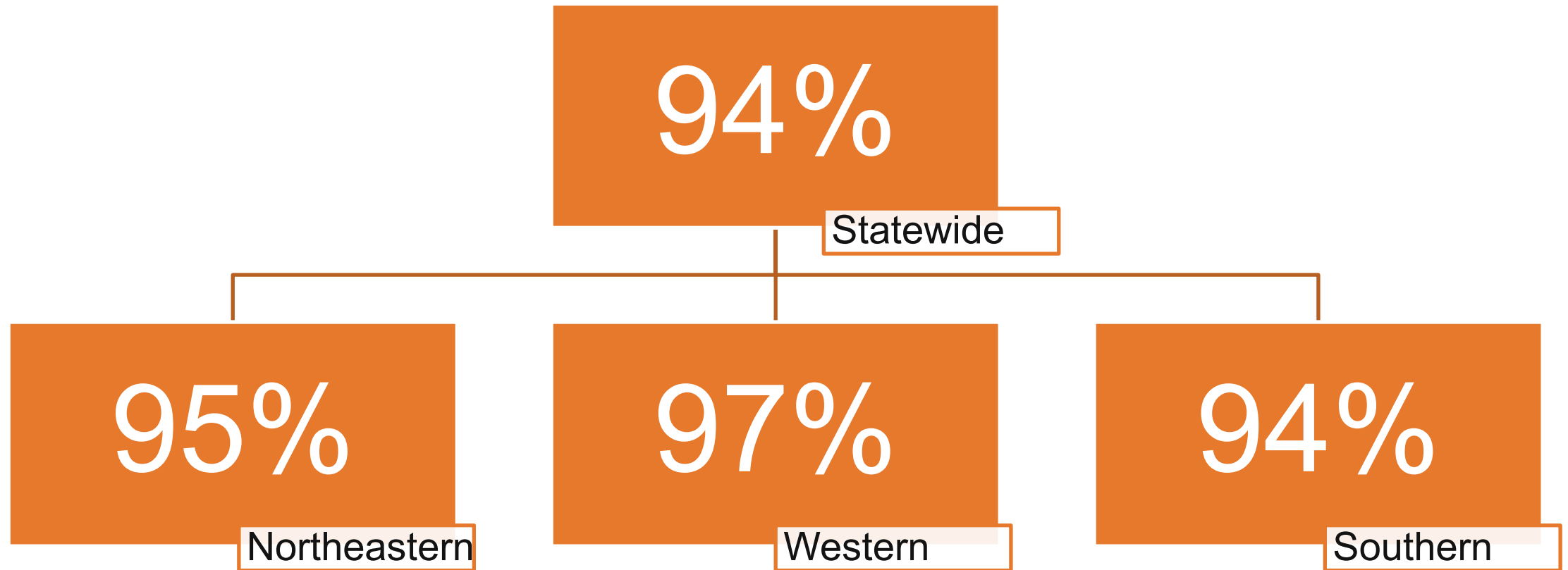


Connection to State Improvement Plan

- **Equity.** We predominantly serve low-income students and students of color, targeting investment to those who face persistent barriers to success.
- **Transparency.** Public-private partnerships make effective and efficient use of public funds, ensuring taxpayers receive a strong return on their investment.
- **Community.** With a network of 120+ community partners, we mobilize resources and assets to build the capacity of systems to respond to student needs.
- **Goal 3.** Our model of Integrated Student Supports helps close PK-8 opportunity gaps.
- **Goal 4.** Our supports reduce graduation rate opportunity gaps; enhance support for English Language Learners; and have the potential to increase college enrollment.
- **Goal 6.** CIS works to implement Multi-Tiered Systems of Support; improve school climate; and expand access to behavioral health professionals.

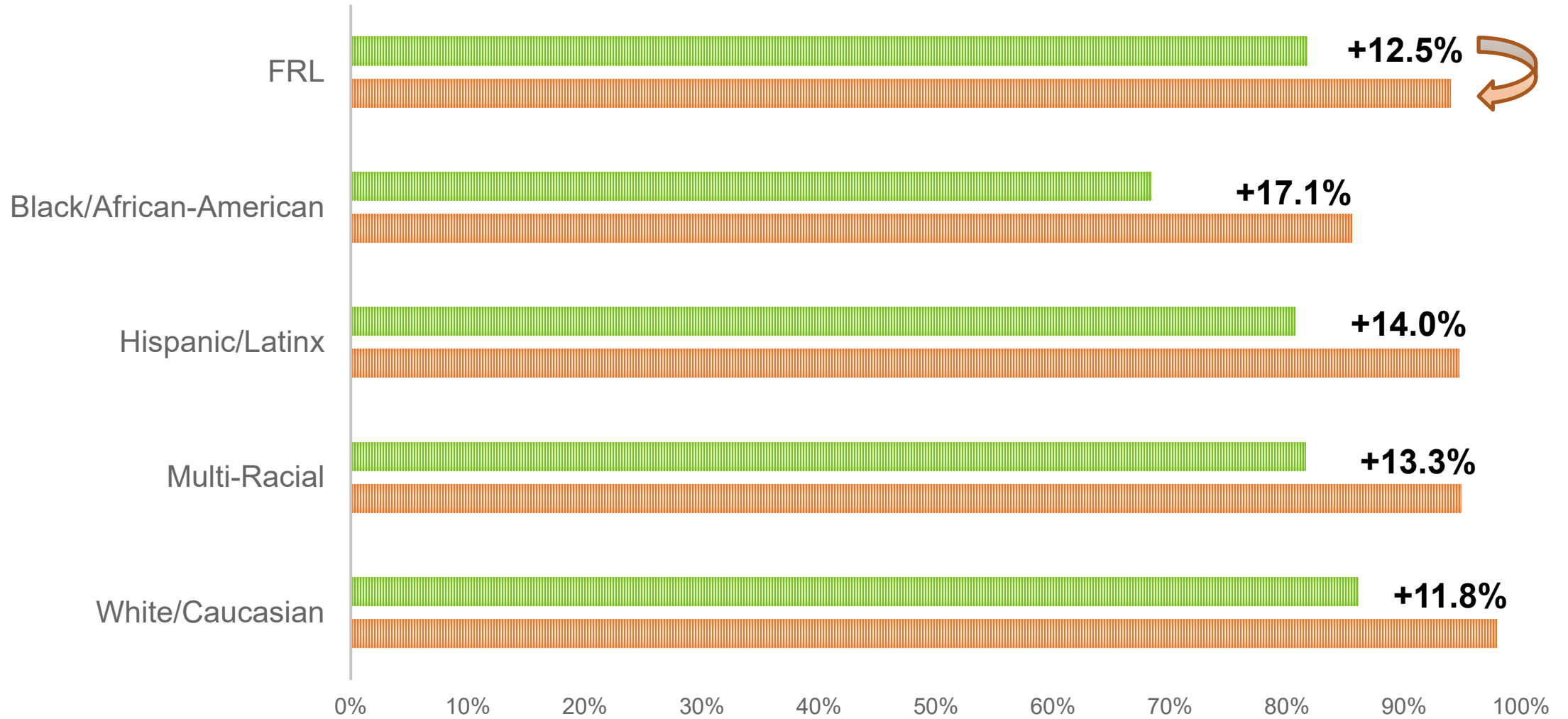
2021-22 Graduation Rates

453 Students Graduated with the Support of CIS Site Coordinators



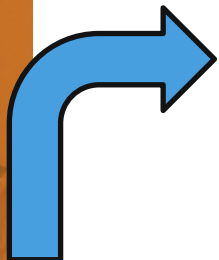
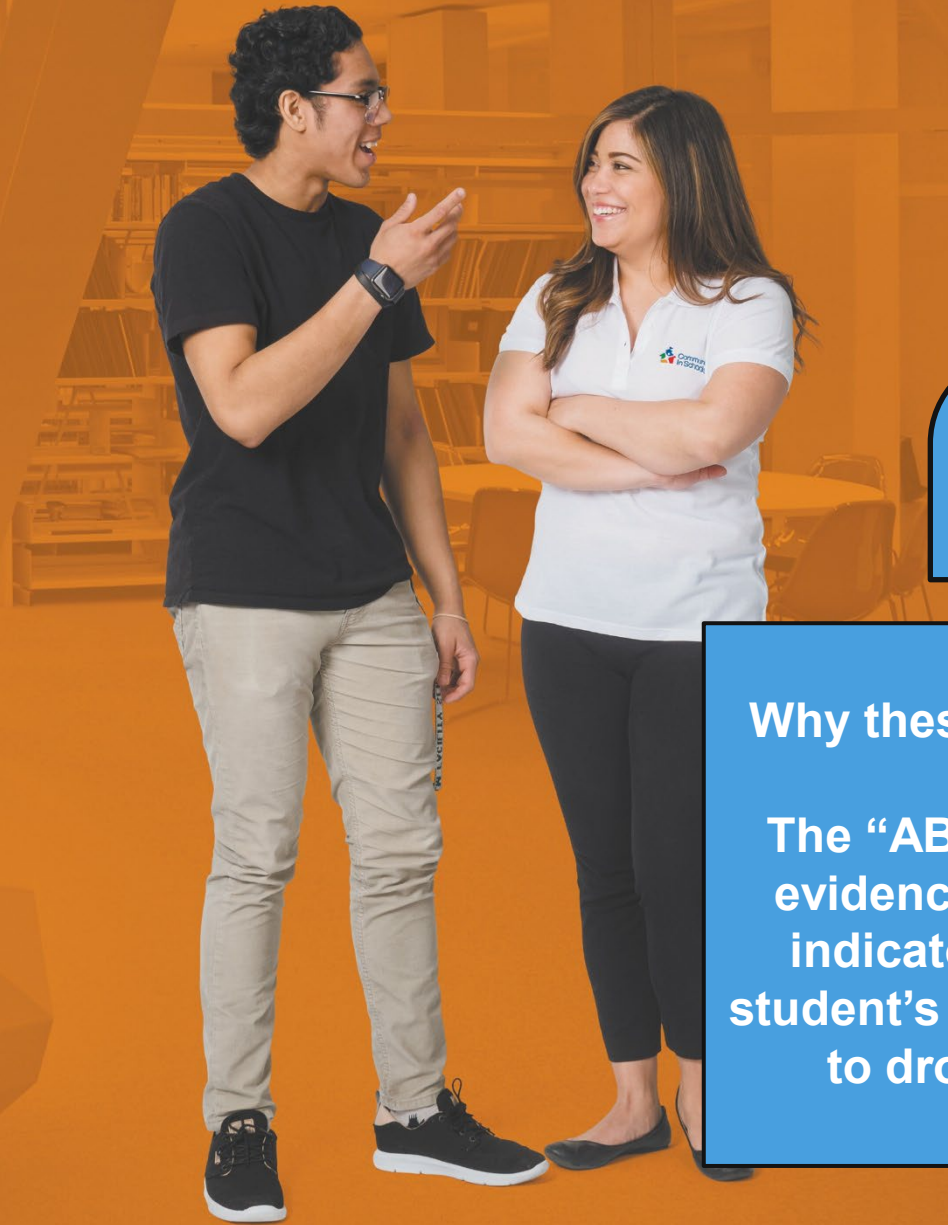
GRADUATION RATE COMPARISON (SY 2021-22)

Statewide Average CIS



Delivering Results for Students

Statewide Data for 2021-22 School Year



70%
Improved Attendance



83%
Improved Behavior



79%
Improved Coursework

Why these goals?

The “ABC’s” are evidence-based indicators of a student’s likelihood to dropout.



96%
Promoted to Next Grade Level

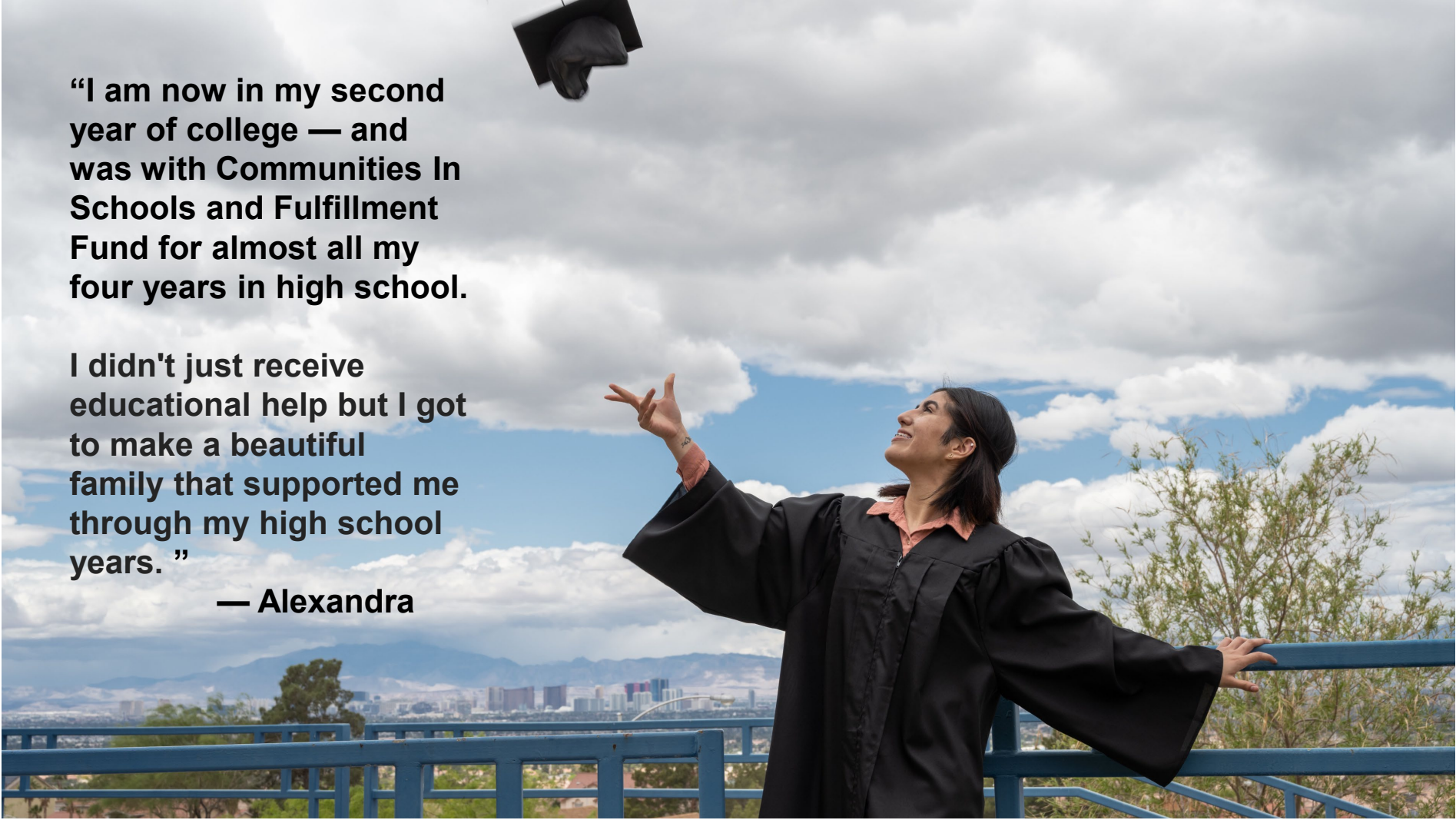


97%
Academy Students Graduate



94%
Students Graduate

Students Supported by CIS, J4NG and Fulfillment Fund



“I am now in my second year of college — and was with Communities In Schools and Fulfillment Fund for almost all my four years in high school.

I didn't just receive educational help but I got to make a beautiful family that supported me through my high school years. ”

— Alexandra

Alexandra's Story

Alexandra graduated from Chaparral in 2021 with the support of both Communities In Schools and Fulfillment Fund — and is now a student at UNLV.

Citlaly's Story

“These kinds of programs in school provide better opportunities for students who have given up on themselves and school.

These programs become a big factor into how students grow. The coordinators help motivate students to go to school and actually put in an effort into something that will be valued later on in life.

— Citlaly



Citlaly is a senior at Chaparral High School who is supported by both Communities In Schools and Jobs for Nevada's Graduates.

Thank You!

*Learn more at
cisnevada.org*



Communities
In Schools

Nevada