

# School Improvement in Nevada

Office of Student and School Supports

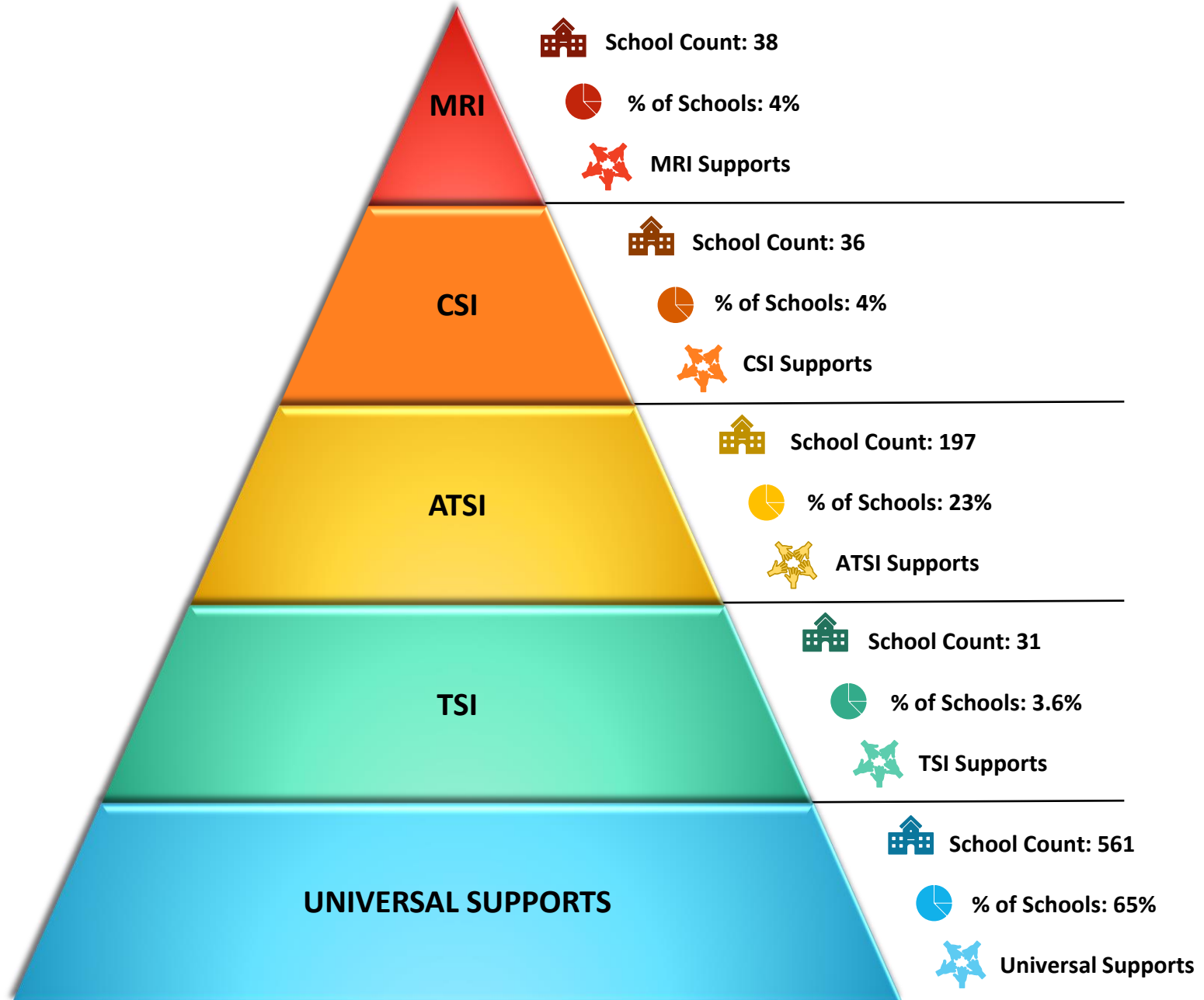
November 1, 2023

Maria Sauter, Director Office of Student and School Supports

Jessica DeLallo, Title I Director, Office of Student and School Supports



# School Data by Federal Designation



# Timeline of Stakeholder Meetings-2023

February – May	Meetings with Technical Advisory Group
May	Submitted revised ESSA State Plan to USED
August	ESSA State Plan approved by USED
September	School Designations using new business rules

# Why Change the Rules?

- Aligning State benchmarks and goals streamlines Local Education Agencies (LEAs) ability to create a focused support system.
- Alignment ensures LEA funding is applied in a timely manner and based upon the school's specific needs resulting in positive change.
- School improvement is a systems approach that empowers school and community leadership to connect their needs, illustrated by data, to evidence-based practices for rapid school transformation.

# Targeted Support and Intervention (TSI)



# Benefits of the Change:

- Districts are closest to the schools and the community to best understand their needs.
- The new criteria allows local education agencies to target their supports to a specific identified student group.

# Additional Targeted Support and Intervention (ATSI)

All schools designated TSI in the current year



Schools that have very low student group performance that, on their own, would lead to a "CSI" designation



ATSI Designation

# Benefits of the Change:

- Through this change, local education agencies are able to provide laser-like focus for improvement of their school's most at-need student group(s).
- Schools are able to show growth for the individual students needing the additional supports.



# Comprehensive Support and Intervention (CSI)



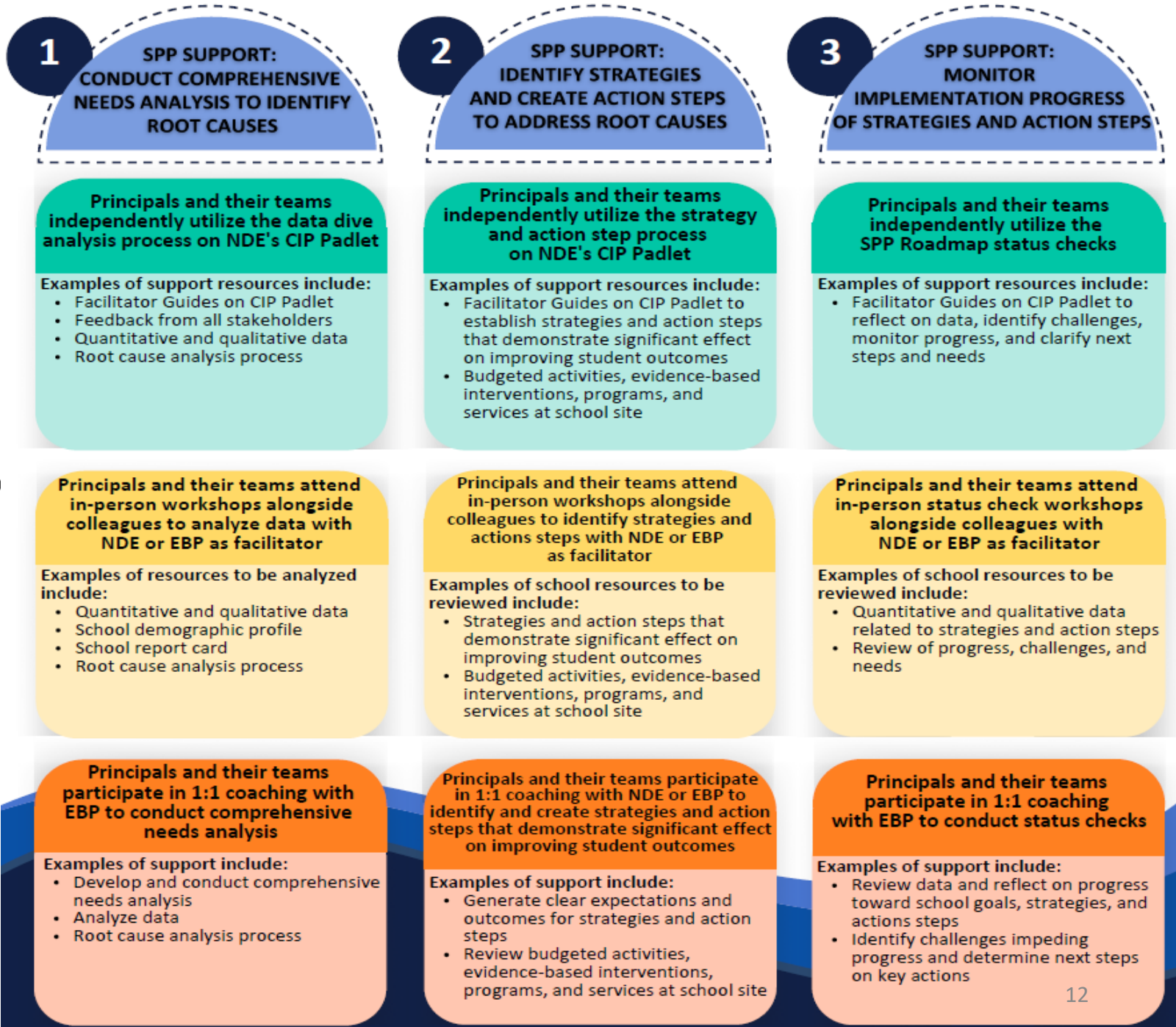
# Benefits of the Change:

- Alignment of criteria allows the data to be calibrated and analyzed to allow for a systematic approach to improve schools.
- Data can be strategically used to develop a 3-tiered system of support to evaluate progress of evidence-based interventions.

# More Rigorous Intervention Schools

- School year 2024 is the first year that schools are being identified in need of more rigorous interventions (MRI).
- NDE is partnering with local education agencies developing a tiered system of supports, the 6 Essentials, to assist school in with the implementation of evidence-based strategies for improvement.

# More Rigorous Interventions



# More Rigorous Interventions

4

## IMPLEMENT SCHOOL/LEA-INITIATED PL CONNECTED TO ACTION STEPS

Principals and their teams collaborate with the LEA and/or EBP to provide PL

### Examples of PL include:

- PL during PLCs
- PL provided by EBP
- PL provided by RPD
- PL provided by LEA

Principals and their teams attend workshops or conferences focused on school improvement topics that support the SPP strategies and action steps

### Examples of workshops and conferences include:

- In-person, monthly PL workshops
- Learning for the Future Conference hosted by NDE
- Model Schools Conference

Principals and their staff receive 1:1 coaching with EBP focused on PL aligned with SPP strategies and action steps

### Examples of support include:

- School-site staff participates in PL aligned with SPP or school improvement topics, at least monthly
- Attend EBP's designated conference

5

## IMPLEMENT MULTI-TIERED SYSTEM OF SUPPORTS (MTSS) SCHOOL-WIDE

Principals and their teams create and implement a school-wide framework for MTSS

### Examples of tasks include:

- Create Leadership Team
- Plan initial year's goals and action steps
- Provide PL for staff
- Review and revise SPP accordingly

Principals and their team attend in-person workshops alongside other schools to implement the three-year MTSS framework with NDE and UNR

### Examples of tasks include:

- Reach out to NDE contact for MTSS framework information
- Determine knowledge level of staff and provide MTSS PL accordingly
- Review and revise SPP accordingly

Principals and their staff work 1:1 with NDE and UNR to implement the three-year MTSS Framework

### Examples of tasks include:

- Reach out to NDE contact for 1:1 coaching and MTSS framework information
- Determine knowledge level of staff and provide MTSS PL accordingly
- Review and revise SPP accordingly

6

## UTILIZE SEA-PROVIDED PL INTO DAILY INSTRUCTION

Principals and their teams receive onboarding from a State-provided vendor to enhance PL around instructional strategies

### Examples of tasks include:

- Introduce the PL opportunities to whole staff
- Review data to understand student and staff needs

Principals and their teams attend workshops alongside other schools to learn how to implement PL and innovate instruction

### Examples of tasks include:

- Learn about autonomous professional learning related to evidence-based classroom instruction

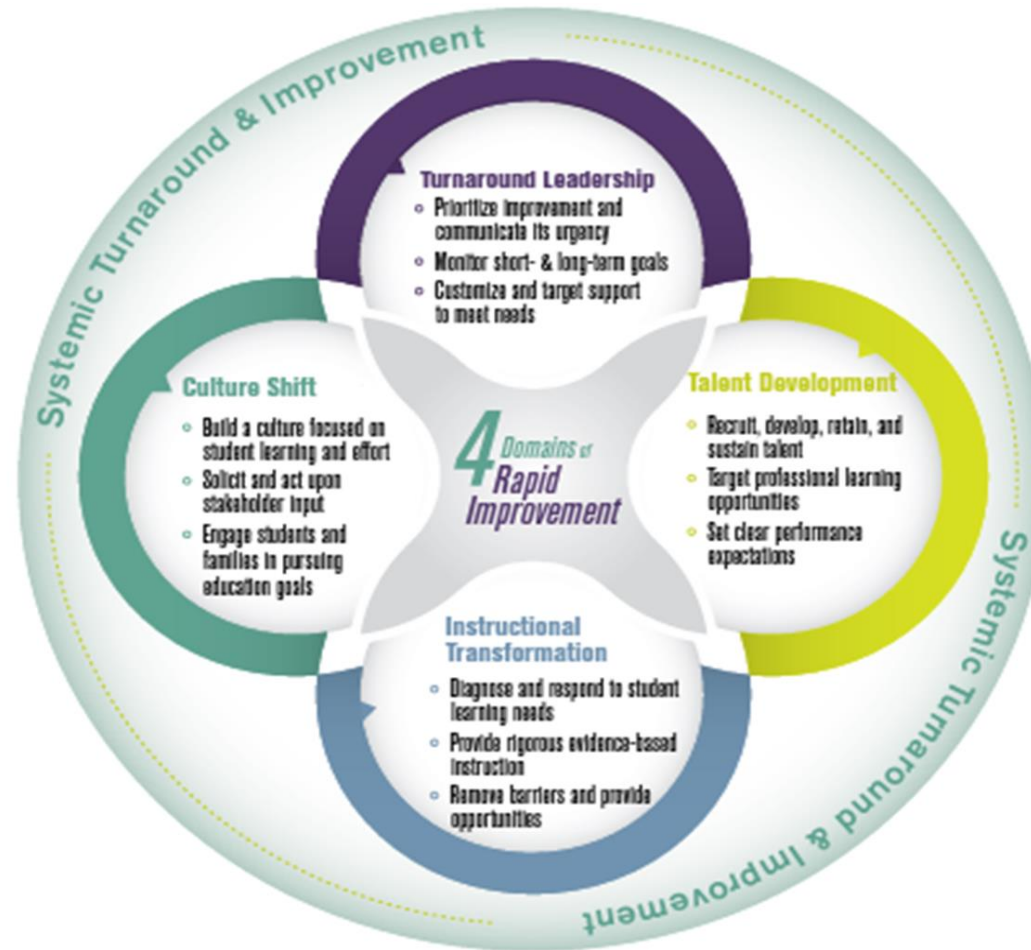
Principals and their staff work 1:1 with State-provided vendor on autonomous, differentiated learning to innovate instruction

### Examples of support include:

- Develop a comprehensive understanding of how the PL lessons can benefit school improvement
- Create PL lessons according to needs of staff and students
- Receive coaching tips



# 4 Domains for Rapid School Improvement



# 302 Designated Schools

MRI	
Previous Total	0
Exited	NA
Newly Identified MRI	38
<b>Total</b>	<b>38</b>

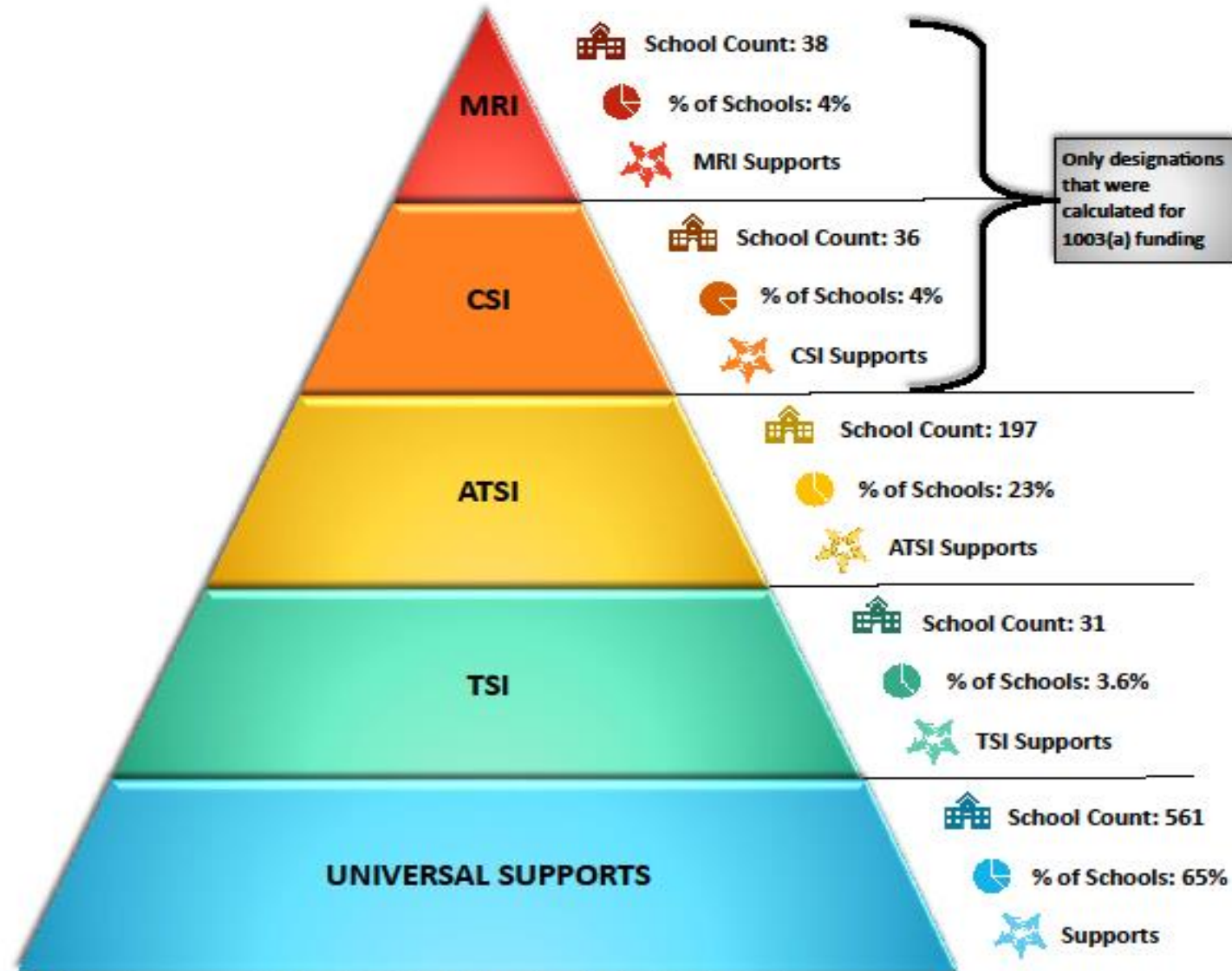
CSI	
Previous Total	71
Exited	12
Moved to MRI	38
New	15
<b>Total</b>	<b>36</b>

ATSI	
Previous Total	167
Exited	5
New	35
<b>Total</b>	<b>197</b>

TSI	
Previous Total	18
Exited	17
New	30
<b>Total</b>	<b>31</b>

# A System of Support

SCHOOL DATA BY FEDERAL DESIGNATION



Note: Percentages were calculated using the total number of schools in the State.



# Federal Funding for Our Most At-Risk Schools

Federal funding source	Description of funding source
Title I, A	Schools with high percentage of low-income students
Title I, 1003(a)	School improvement grant for evidence-based interventions in CSI and/or MRI schools
Title II, A	Educator support and professional learning
Title III	English learners
Title IV, A	Well-rounded Education; safe and respectful learning environments; and technology;
Title IV, B	21 <sup>st</sup> Century Community Learning Centers/ Afterschool Programs

# Supports and Professional Learning Opportunities

The Nevada Department of Education is:

- Supporting schools in the development and implementation of the School Performance Plan;
- Providing schools leadership one-on-one coaching by an evidence-based Provider;
- Providing schools a Self-Assessment tool to determine areas of need within the 6 Essentials;
- Offering a Local Education Agencies School Improvement Network;
- Creating and offering a School Improvement Leadership Network;
- Providing On-Demand and differentiated professional learning;
- Providing a Multi-Tiered Systems of Support Training; and
- Offering Data analysis and Root Cause support.



# Timeline for Implementation

Date	Support
November-December 2023	MRI school site visits
December 2023	CSI School Performance Plan review and feedback
January-February 2024	Develop Principal Leadership Network
March 2024	CSI School Performance Plan Review
March-June 2024	Facilitate Principal Leadership sessions
June-July 2024	Begin School Leadership Network Cohort 2

# Questions?

## Office of Student and School Supports Contacts:

- Maria Sauter, Director: [msauter@doe.nv.gov](mailto:msauter@doe.nv.gov)
- Dr. Jessica DeLallo, Title I Director and Federal Liaison: [jessica.delallo@doe.nv.gov](mailto:jessica.delallo@doe.nv.gov)
- Karl Wilson, Title III Director: [karlwilson@doe.nv.gov](mailto:karlwilson@doe.nv.gov)
- Chris McAnany, Title IV Director: [christopher.mcanany@doe.nv.gov](mailto:christopher.mcanany@doe.nv.gov)