

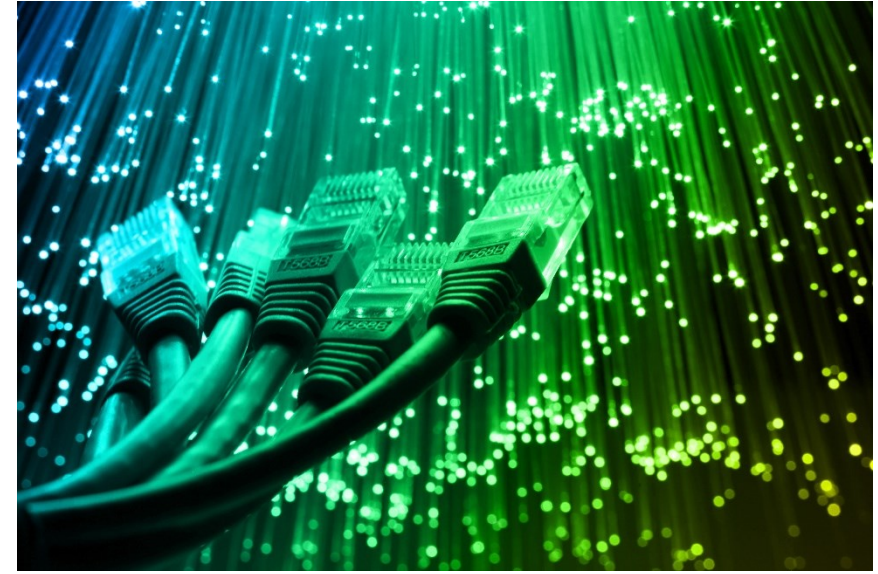


# Nevada Governor Office of Science Innovation and Technology

**INTERNET CONNECTIVITY AND TECHNOLOGY SERVICES**  
**MEETING OF THE STATE BOARD OF EDUCATION- 06/04/2020**  
**BRIAN MITCHELL- DIRECTOR**



# Science, Technology, Engineering and Math (STEM) Education



## Broadband



## Graduate Medical Education

# Current School District Connectivity

School District	WAN Ranges	Internet	WAN Status
Carson City	1GB-10GB	NSHE	Upgraded 2019; 1G WAN Circuits over Fiber for all schools but Carson City High School which has 10G over Fiber
Churchill	1GB	1GB	Upgraded 2018-Every School has a 1G WAN Circuit over Fiber
Clark- Urban	1GB+ (Dark Fiber)	120GB	Dark Fiber WAN for Schools within the City of Las Vegas
Clark - Rural East	1GB+ (Dark Fiber)	10GB	Fiber to the East - Moapa and Mesquite
Clark - Rural West	Fixed Wireless	10MB-300MB	Wireless to the West
Douglas	500MB	1GB	Upgraded in 2019 to 500Mbps fiber WAN
Elko - City Schools	1GB-10GB	NSHE	Upgraded in 2017 and 2018 to Fiber
Elko - Rural Schools	Fixed Wireless and Copper	70MB-250MB	Exploring long-term increased connectivity solutions to Owyhee, Jackpot, Wells, and West Wendover
Esmeralda	100MB	1GB	Upgraded 2019 to Fiber for Goldfield and wireless connections for Silver Peak and Dyer
Eureka	100MB	1GB	Upgraded Connection to NSHE PoP in 2018; Applied for Fiber to Crescent Valley in 2020
Humboldt	1GB	6GB	Dark Fiber to all Schools in Winnemucca; 20MB Fiber Connections upgraded in 2019 for Denio; Paradise Valley and Orvada
Humboldt	150MB	150MB	Upgrade Wireless Connection to McDermitt applied for in 2020

# Current School District Connectivity

School District	WAN Ranges	Internet	WAN Status
Lander	100MB	100MB	Austin upgraded in 2019 to Fiber; District Owned Fiber to Schools in Battle Mountain that are North of I-80
Lincoln	50MB-250MB	NSHE	Upgraded connections in 2019 from Lincoln County Telephone
Lyon	10GB	10GB	Fiber WAN for all schools upgrades occurred 2017-2020; Core Fiber Ring encompassing Dayton, Fernley; Smith Valley and Yerrington with Schools connected with fiber laterals off the ring.
Mineral	1GB+	2GB	Fiber upgraded in 2019 for Schurz School and for Schools in Hawthorne
Nye- City Schools	1GB	NSHE	Upgrades from VEA for fiber schools in 2019
Nye- Rural Schools	Fixed Wireless	NSHE	Wireless Service to Round Mountain, Gabbs and Duckwater in 2020
Pershing	1GB	100MB	Lovelock Schools new fiber WAN in 2019; Imlay School upgraded connection in 2019
Storey	100MB	250MB	Existing contract expires in 2021
Washoe	1GB-10GB	NSHE	Existing contract expires in 2021
White Pine	1GB	NSHE	Fiber WAN to all schools including those in Ely, Baker, Lund and McGill should be completed in 2020-21



# Challenges with COVID-19

## Broadband

- Hardware
- Connectivity

## STEM

- Teacher and School Professional Development

# Nevada Department of Education Elementary and Secondary School Emergency Relief (ESSER) Funding Categories

High Quality Professional Development

High Quality Instructional Materials

Technological Capacity



# Support for Districts



## Technological Capacity

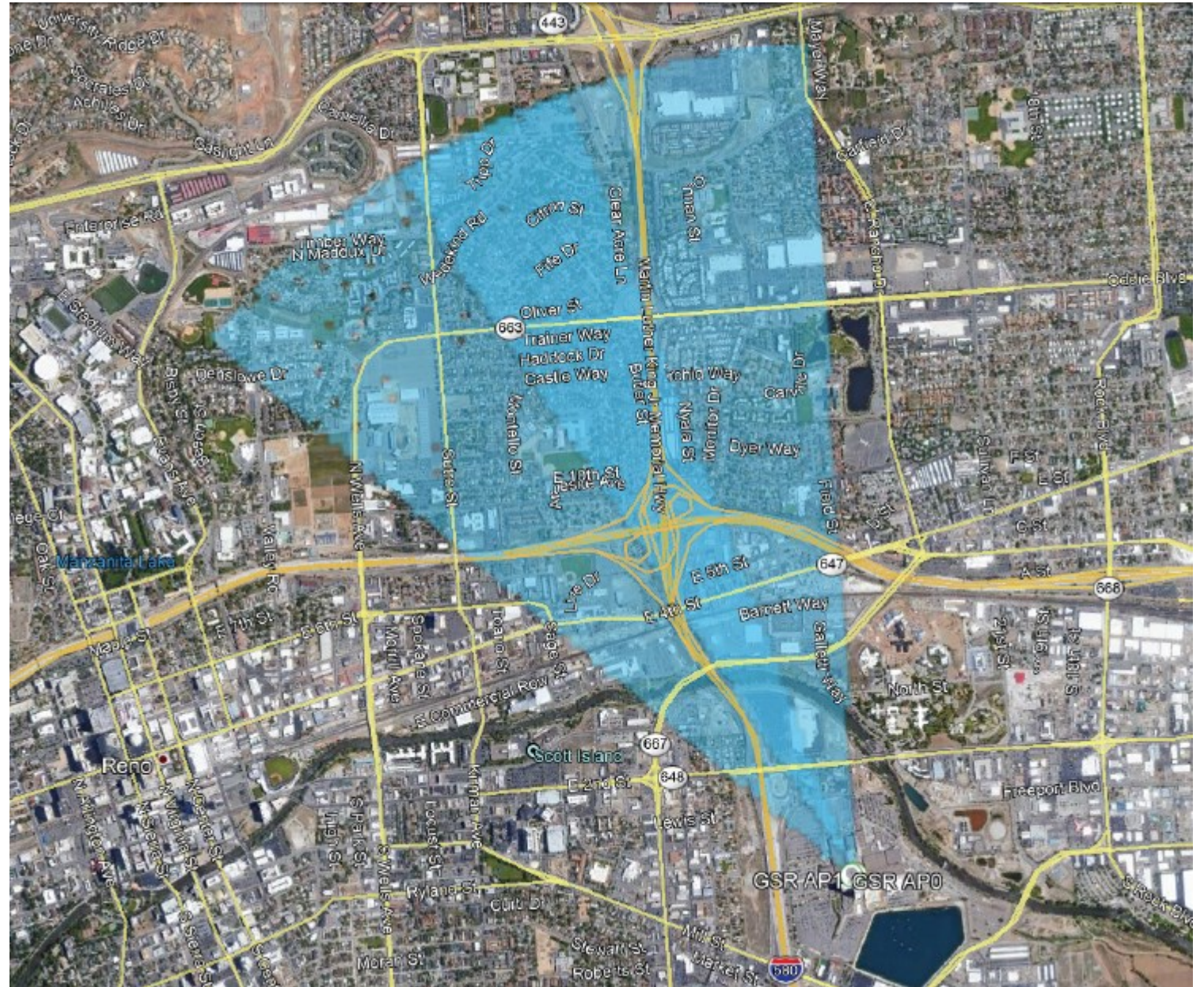
- Personalized Technical Assistance to Districts for ESSER Funding Applications
  - Needs Assessment
  - Network Engineering
  - Technical Specification Development
  - Procurement & RFP
  - Application Technical Review
  - Student and Family Outreach

## STEM

- Virtual Teacher and School Professional Development



# Connectivity Options



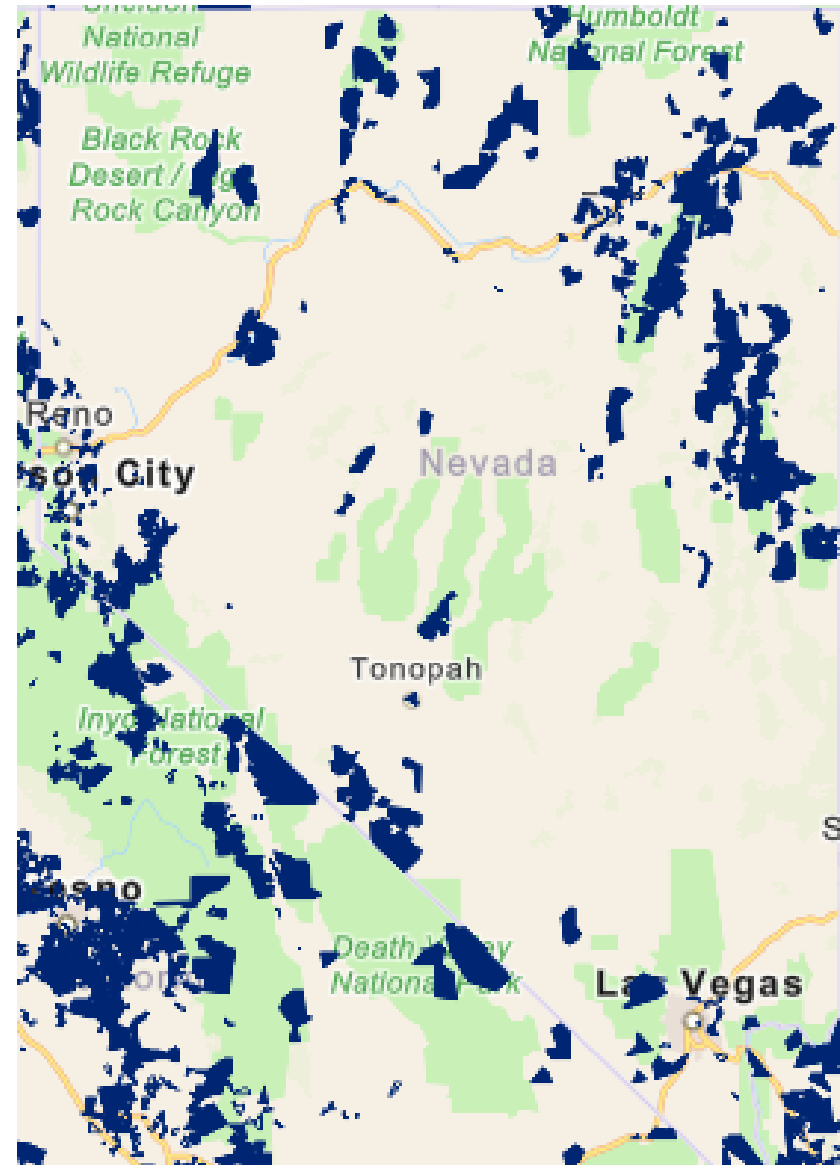


# Connectivity Options

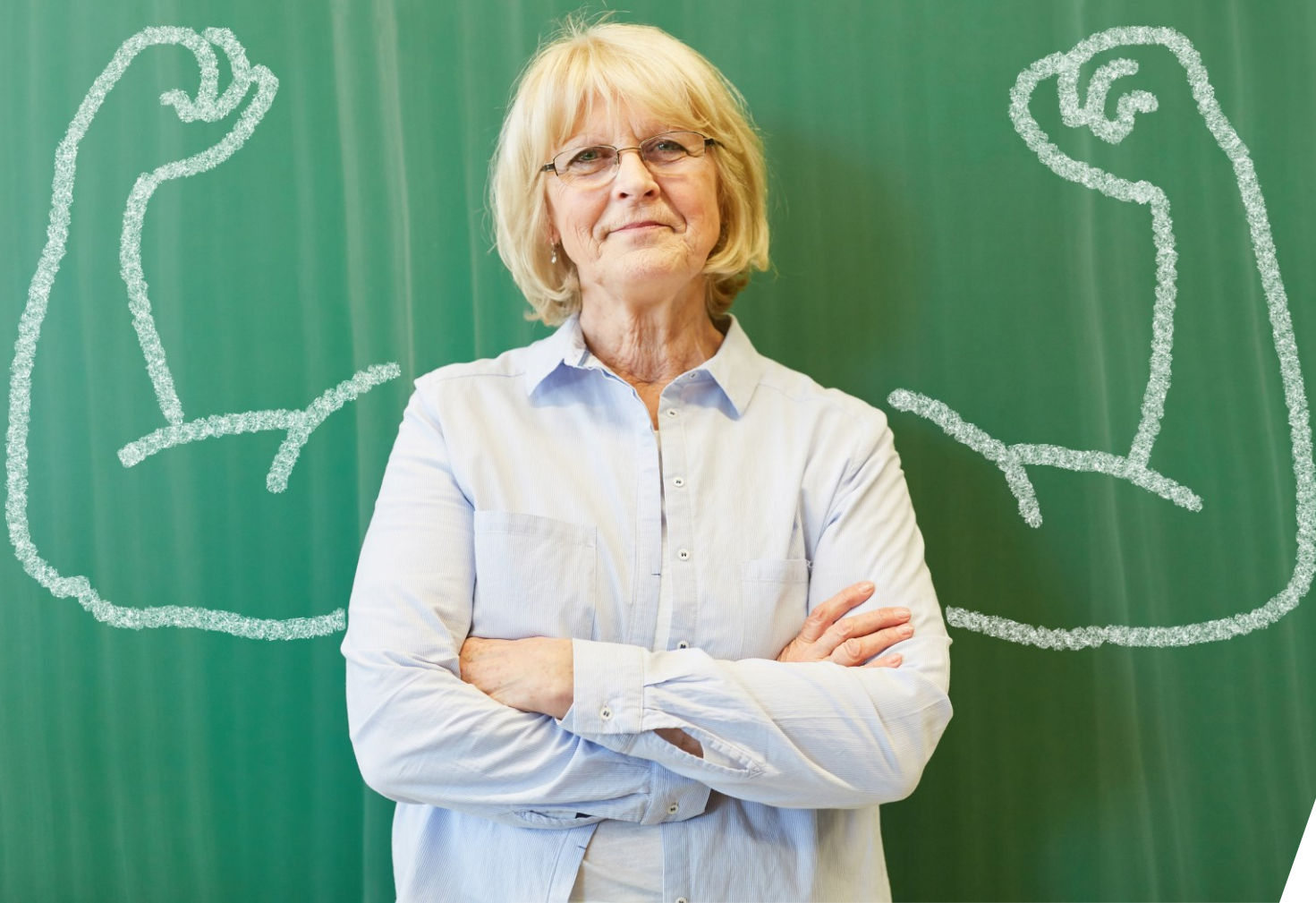
## 25Mbps/3Mbps Internet Availability

The Census Tracts in Blue Represent Lack of 25Mbps Download/3Mbps Upload Internet Access in the Area

Source: Federal Communications Commission as of 3/2020



# HEROES Act and Connectivity



## Additional Federal Aid for Broadband [Proposed]

- E-rate or Other Support for WiFi Hotspots, Connected Devices, and Other Equipment
- Support for Home Broadband Connections
- State Fiscal Stabilization Fund



# Questions?

Brian L. Mitchell - Director

[blmitchell@gov.nv.gov](mailto:blmitchell@gov.nv.gov)

