

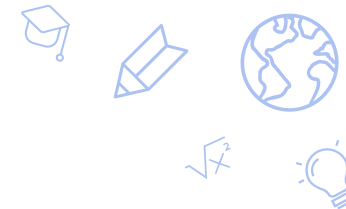


2024-25 School Year SPCSA State Board of Education Presentation

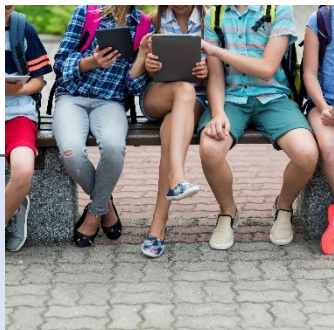


December 10, 2025





Presentation Outline



Who are the students attending SPCSA charter schools?

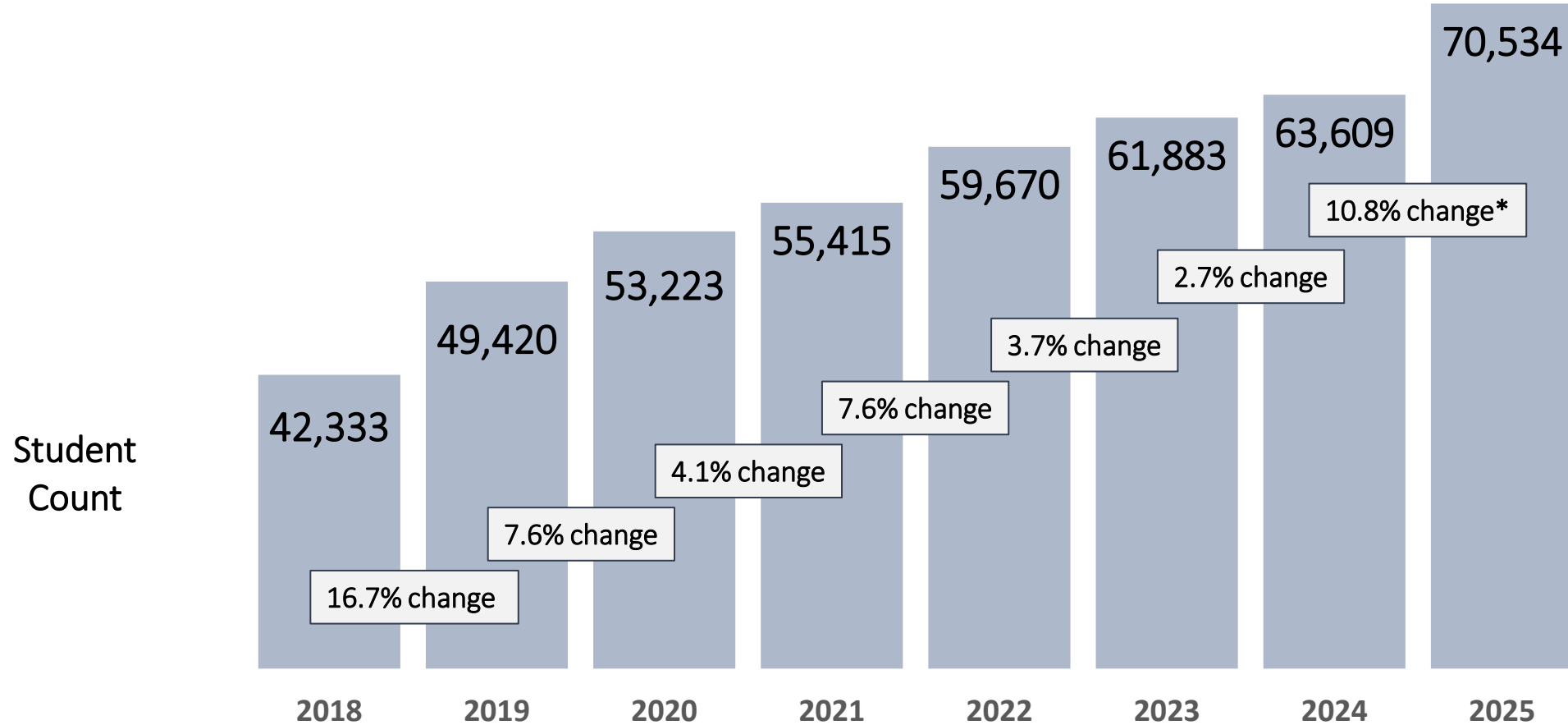
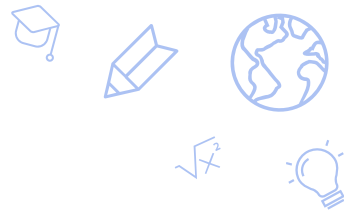


What are the student outcomes in those schools?

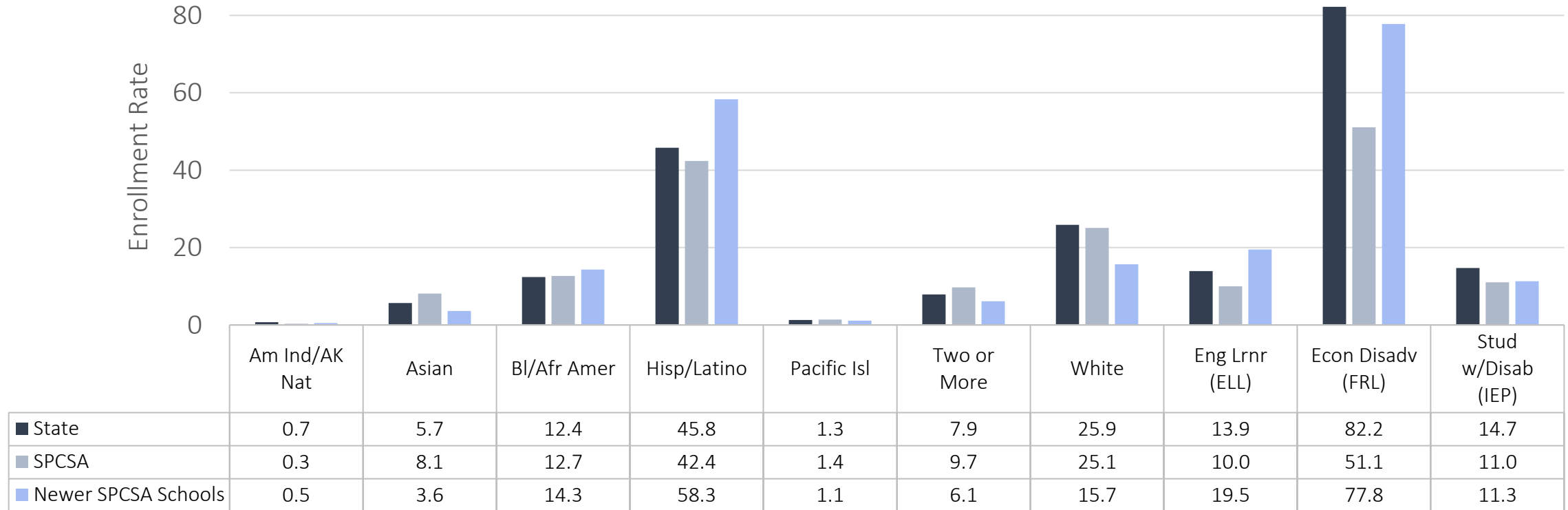
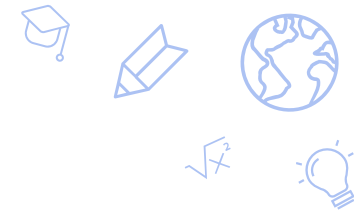


What strategies and approaches are charter schools using?

SPCSA Total Enrollment Trend



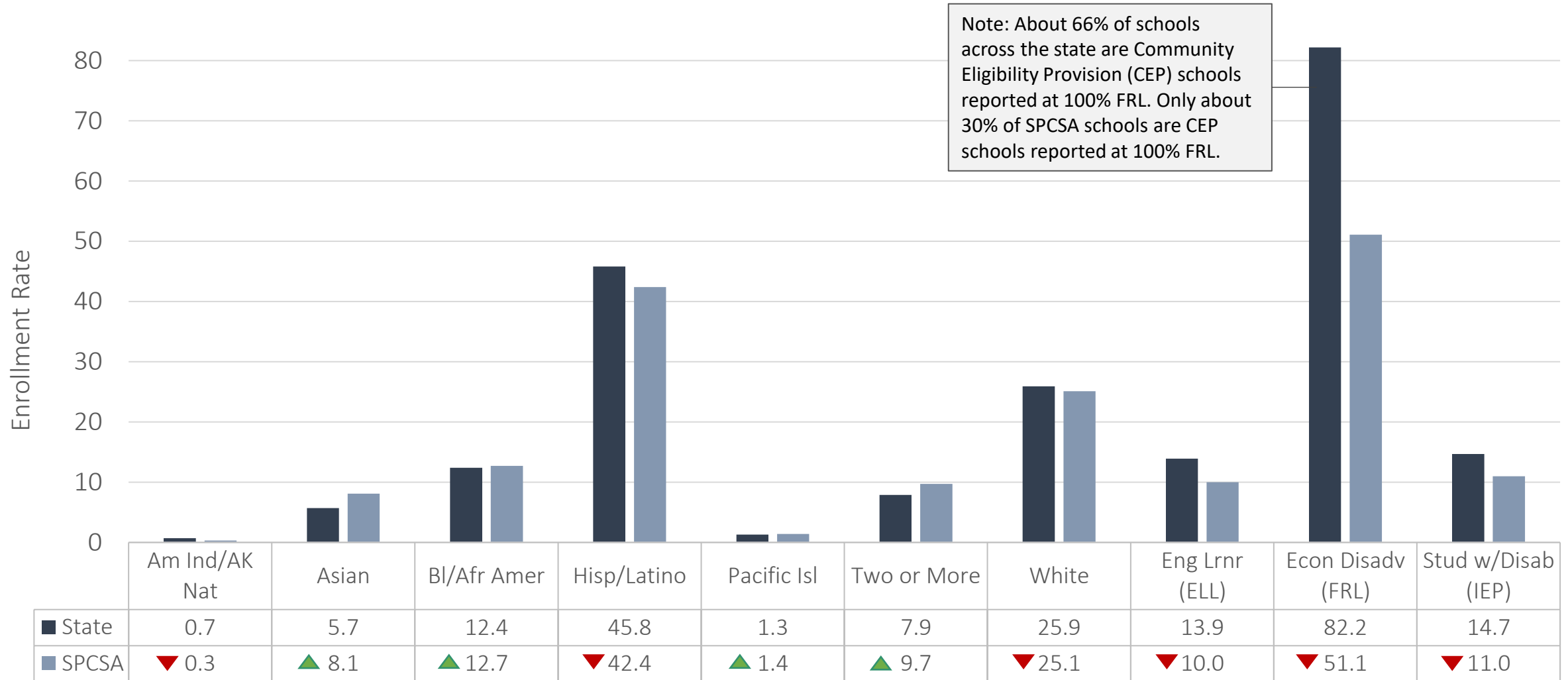
2025-26 Enrollment for Newer SPCSA Schools



Schools included in “Newer SPCSA Schools” are those approved post implementation of the SPCSA Needs Assessment:

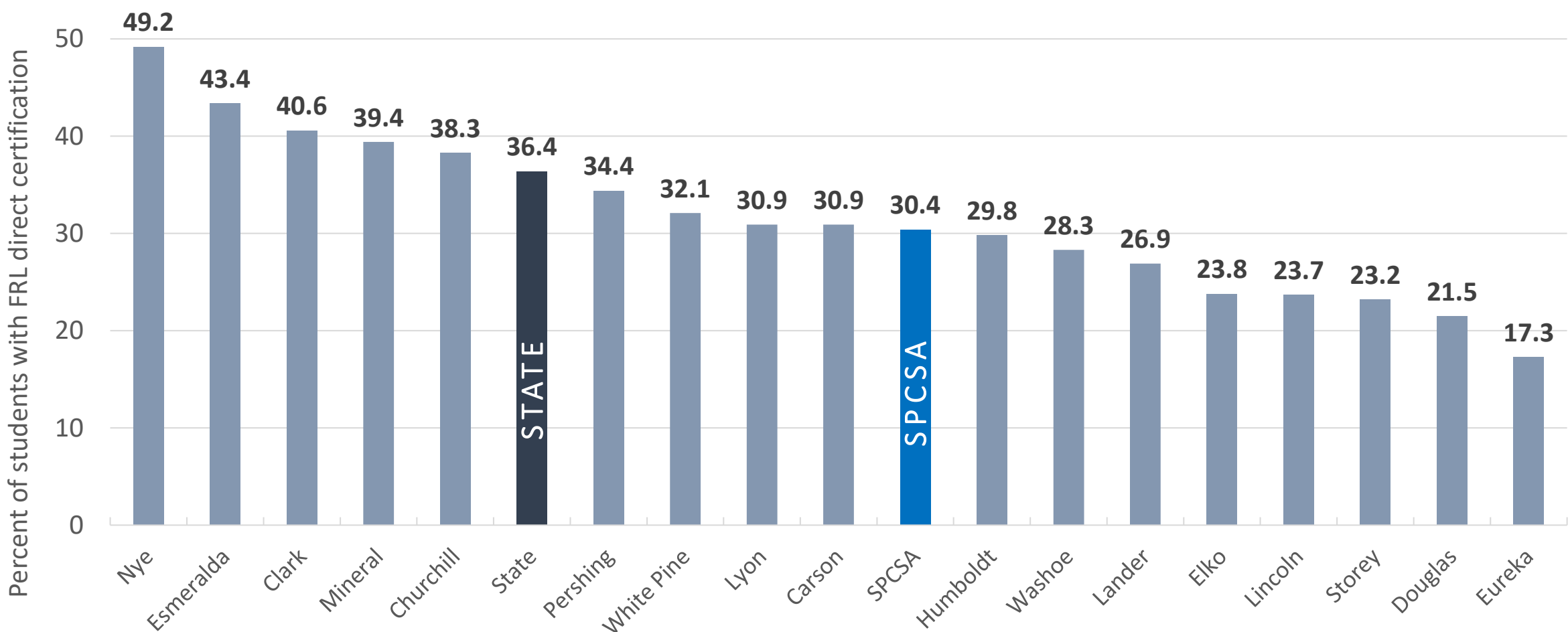
- Opened 2020-21 SY: Explore Acad., Mater Acad. East, Nevada State HS Downtown Henderson, and Pinecrest Acad. Northern Nevada.
- Opened 2021-22 SY: Beacon Acad. (Sahara campus – but note data are included for the entire Beacon charter as data cannot be easily split out) and CIVICA.
- Opened 2022-23 SY: Coral Acad. of Science Las Vegas Cadence, Nevada State HS North Las Vegas, Pinecrest Acad. Virtual, Sage Collegiate, Strong Start Acad., and Young Women’s Leadership Acad.
- Opened 2023-24 SY: Pinecrest Acad. Springs and Southern NV Trades HS.
- Opened 2024-25 SY: Thrive Point Acad. and Vegas Vista Acad.
- Opened 2025-26 SY: Do & Be Acad., Mater Acad. Cactus Park, Nevada Classical Acad. Elko, and WYLEES.

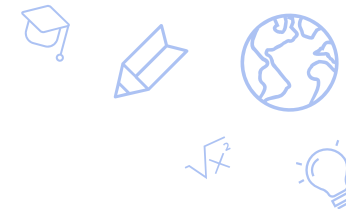
2025-26 SPCSA vs. State Student Group Enrollment





2024-25 SPCSA vs. Nevada Districts: FRL Direct Certification Rates





2024-25 SPCSA vs. Nevada Districts: FRL Direct Certification Rates

Free- and Reduced-Price (FRL) enrollment rates reported in Nevada’s official validation day enrollment data are overinflated due to reporting of Community Eligibility Provision (CEP) schools and districts as 100% FRL. This results in inaccurate comparisons between the SPCSA and other districts / the state regarding FRL enrollment rates.

A comparison of FRL direct certification rates (students directly certified for FRL are automatically eligible for FRL due to their family receiving Medicaid, SNAP benefits, etc.) may result in more accurate comparisons between the SPCSA and other districts / the state.

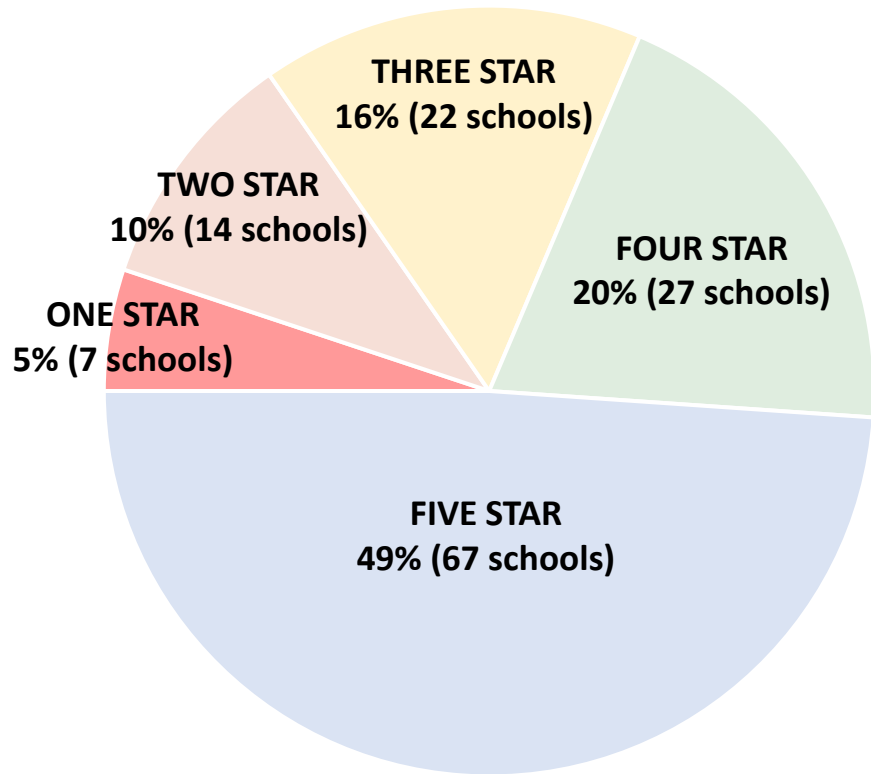
In many cases, district FRL direct certification rates (see in yellow at right) are much lower than their reported FRL enrollment rates.

Entity	October 1 2025 % of students reported eligible for FRL	October 1 2025 % of students directly certified for FRL	Difference
Churchill County School District	51.1	38.3	12.8
Clark County School District	97.0	40.6	56.4
Douglas County School District	37.5	21.5	16.0
Elko County School District	38.1	23.8	14.3
Esmeralda County School District	100	43.4	56.6
Eureka County School District	22.3	17.3	5.0
Humboldt County School District	44.3	29.8	14.5
Lander County School District	98.9	26.9	72.0
Lincoln County School District	45.8	23.7	22.1
Lyon County School District	98.5	30.9	67.6
Mineral County School District	97.8	39.4	58.4
Nye County School District	99.0	49.2	49.8
Carson City School District	60.9	30.9	30.0
Pershing County School District	100	34.4	65.6
Storey County School District	31.6	23.2	8.4
Washoe County School District	61.2	28.3	32.9
White Pine County School District	97.8	32.1	65.7
State Public Charter School Authority	51.1	30.4	20.7
State	82.2	36.4	45.8

2024-25 SPCSA vs. State: NSPF Star Rating Overview

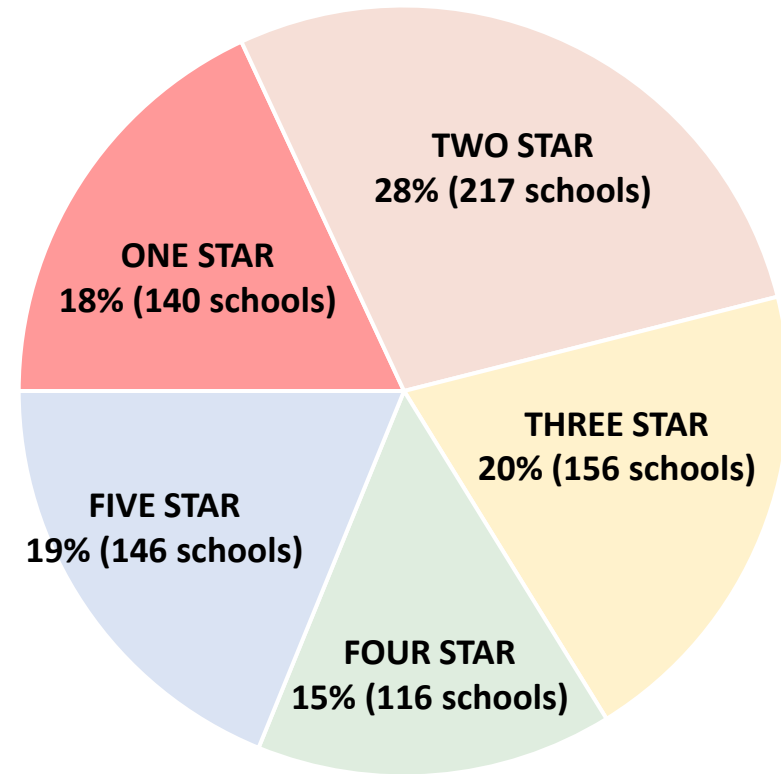


SPCSA



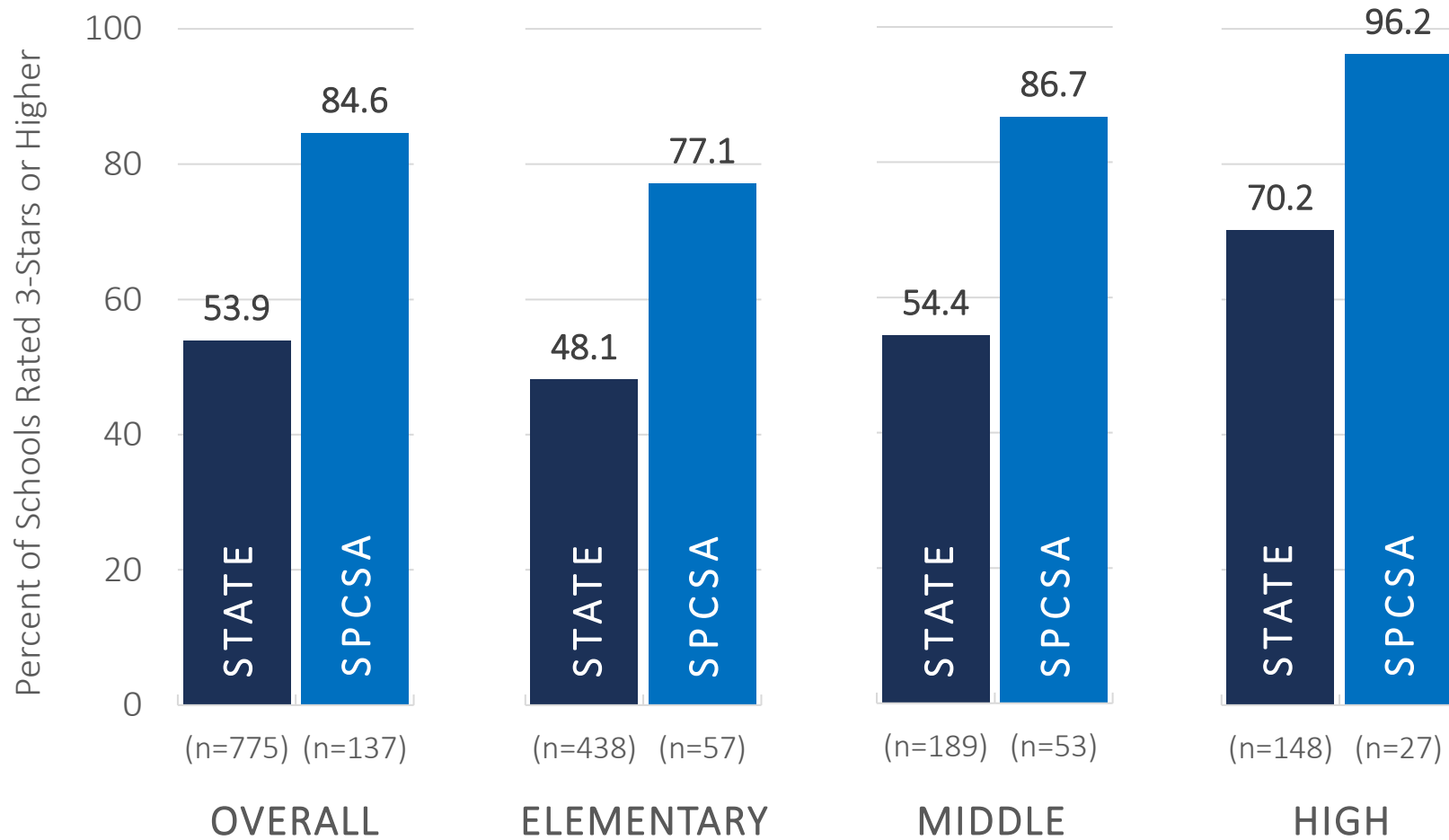
For comparison, in the 2023-24 SY, 15% (21) were 1 star, 12% (16) were 2 star, 21% (29) were 3 star, 18% (25) were 4 star, and 34% (46) were 5 star.

STATE

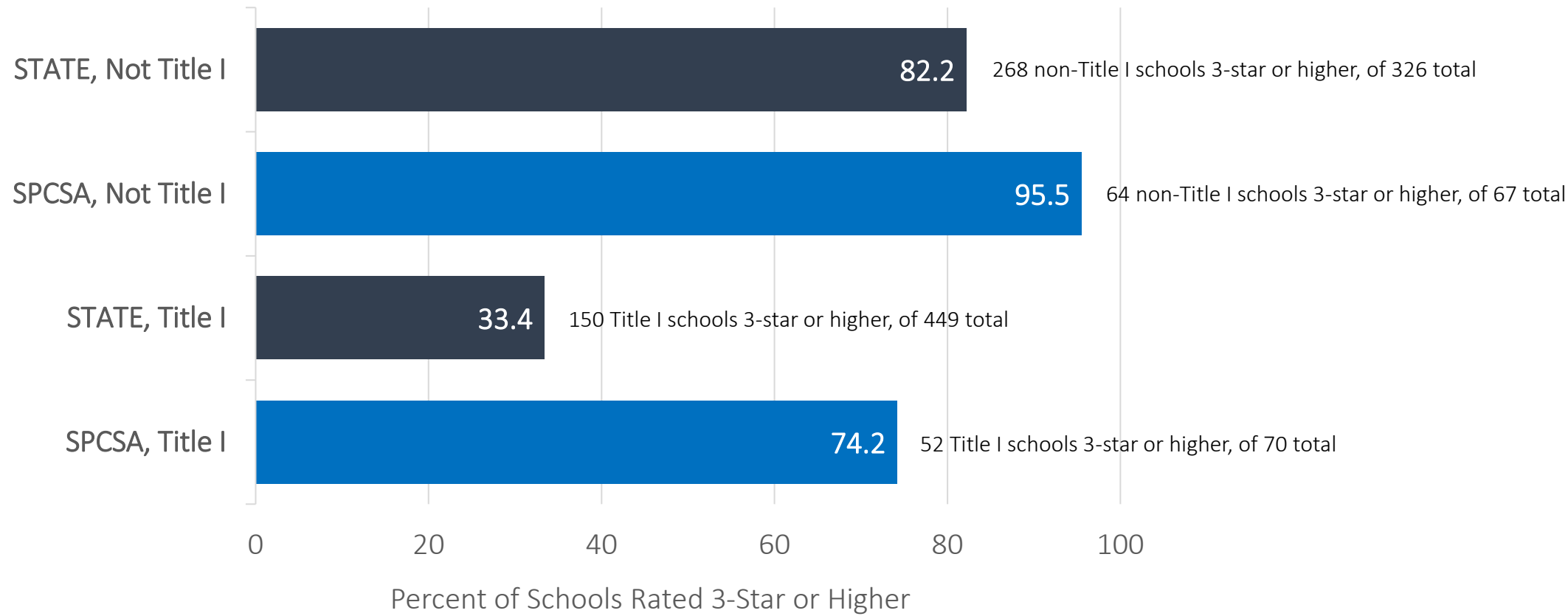
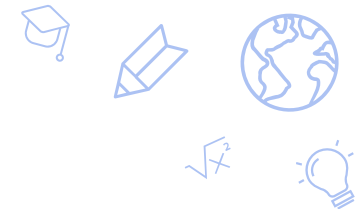


For comparison, in the 2023-24 SY, 30% (232) were 1 star, 26% (198) were 2 star, 20% (157) were 3 star, 12% (92) were 4 star, and 12% (96) were 5 star.

2024-25 SPCSA vs. State: Percent of Schools with 3-Star or Higher NSPF Rating



2024-25 Title I School NSPF Ratings





NSPF Star Rating Changes from 2023-24 to 2024-25

NSPF Star Rating Change	# Schools Across State	% Schools Across State	# SPCSA Schools	% SPCSA Schools
Increase	282	36.7%	51	38.0%
Three Stars	10	1.3%	6	4.4%
Two Stars	45	5.8%	11	8.2%
One Star	227	29.5%	34	25.3%
No Change	419	54.6%	73	54.4%
Decrease	66	8.6%	10	7.4%
Two Stars	3	0.3%	0	0%
One Star	63	8.2%	10	7.4%

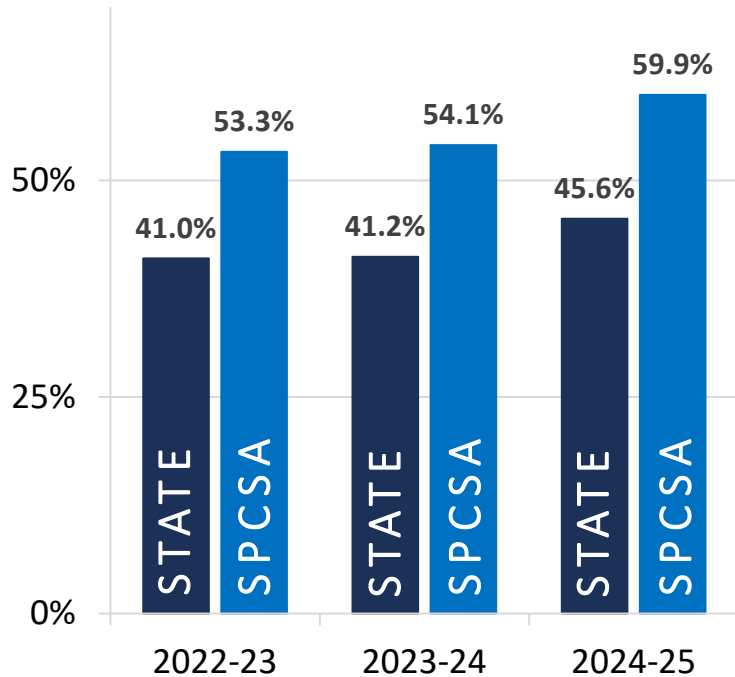
SPSCA Schools with a Three-Star Increase

School	2024-25 NSPF Rating	2023-24 NSPF Rating
CIVICA ES	4	1
CIVICA MS	5	2
Legacy N. Valley ES	4	1
Mater Bonanza ES	5	2
Quest Acad ES	4	1
Somerset Losee ES	5	2

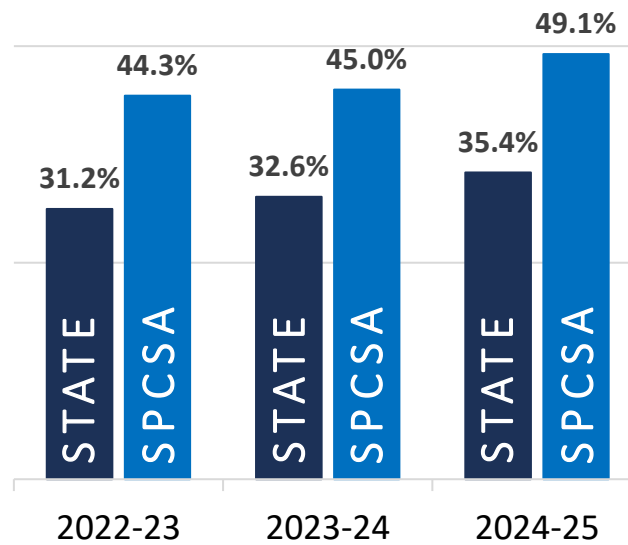
2024-25 SPCSA vs. State: Smarter Balanced Proficiency Trends



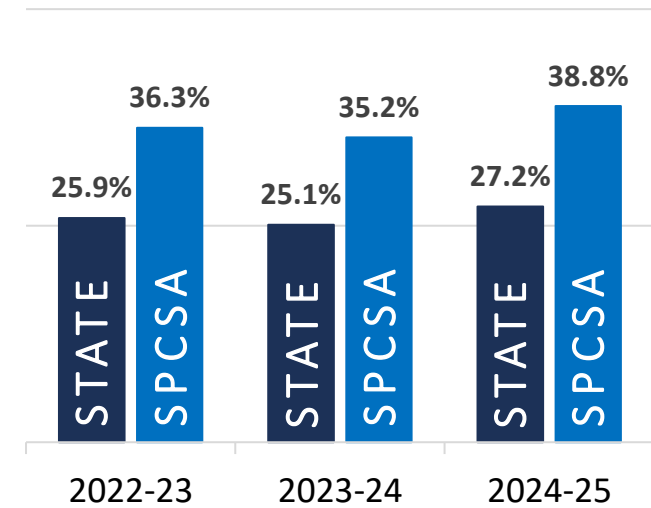
ELA (grades 3-8)



MATH (grades 3-8)



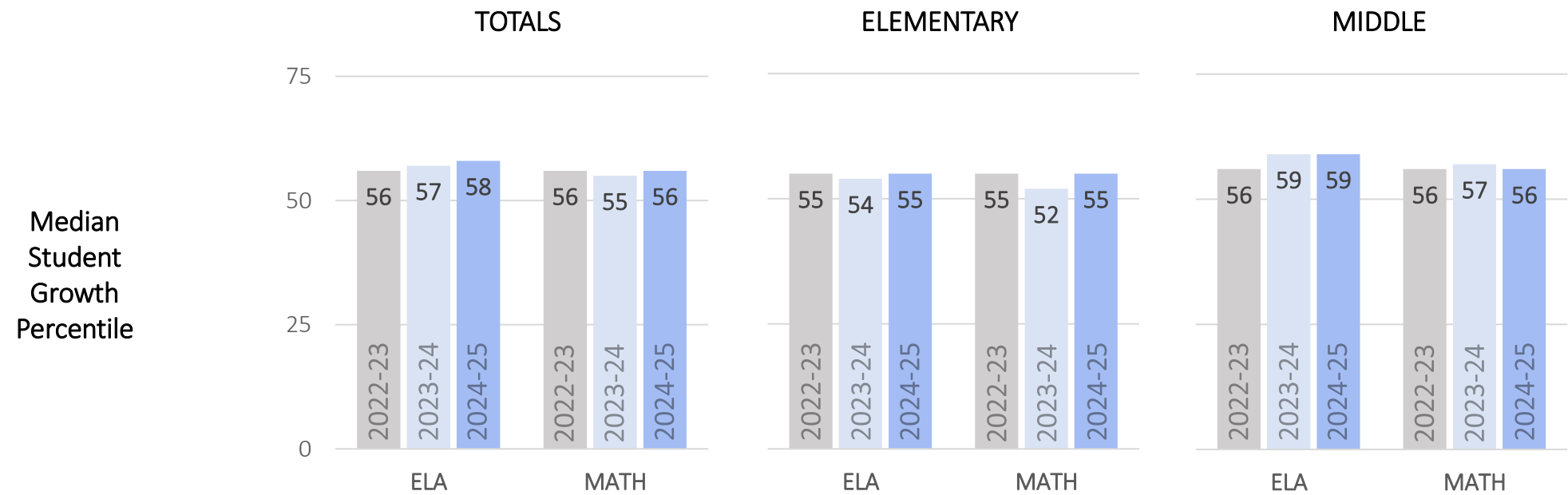
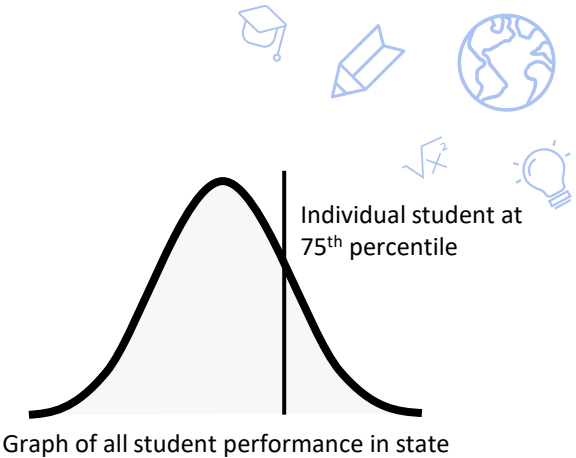
SCIENCE (grades 5 and 8)



SPCSA proficiency rates (overall and for student groups) have generally increased in recent years and also outperform the state.

SPCSA NSPF Median Growth Percentiles Trend

- The NDE uses at least two years of a student’s Smarter Balanced assessment data to calculate growth.
- The NDE calculates how much growth a student has made—compared to their peers—via a Student Growth Percentile (SGP) from 1 to 99. An SGP of 75 means a student has shown more growth than 75% of their peers.
- A school Median Growth Percentile (MGP) is the median of all student SGPs.

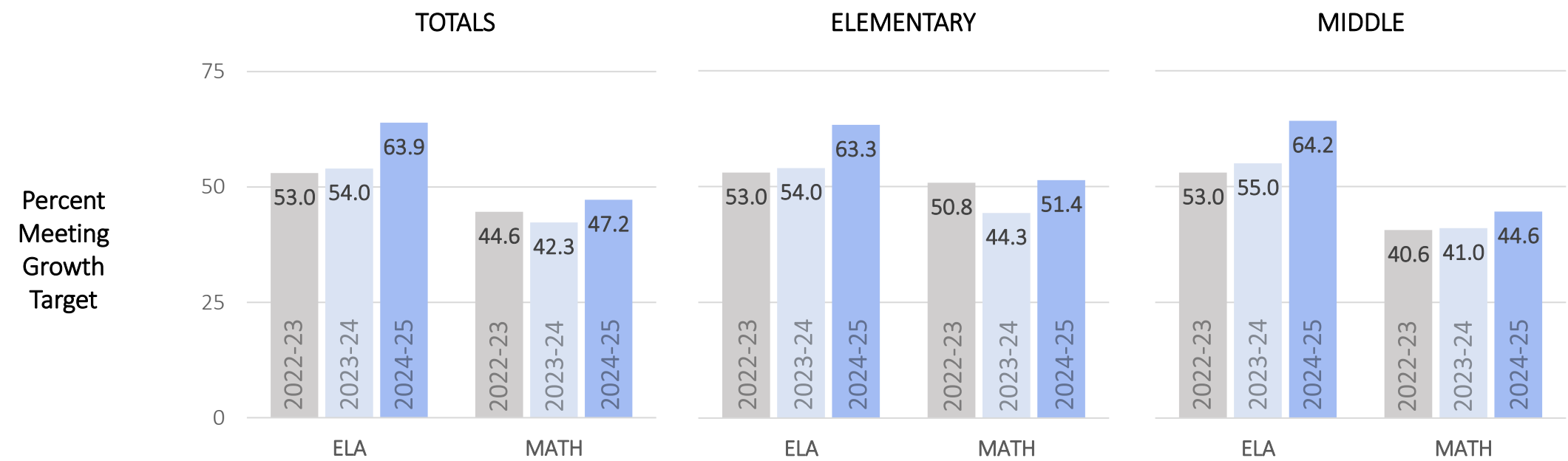


Generally, median growth trends are mixed over time.



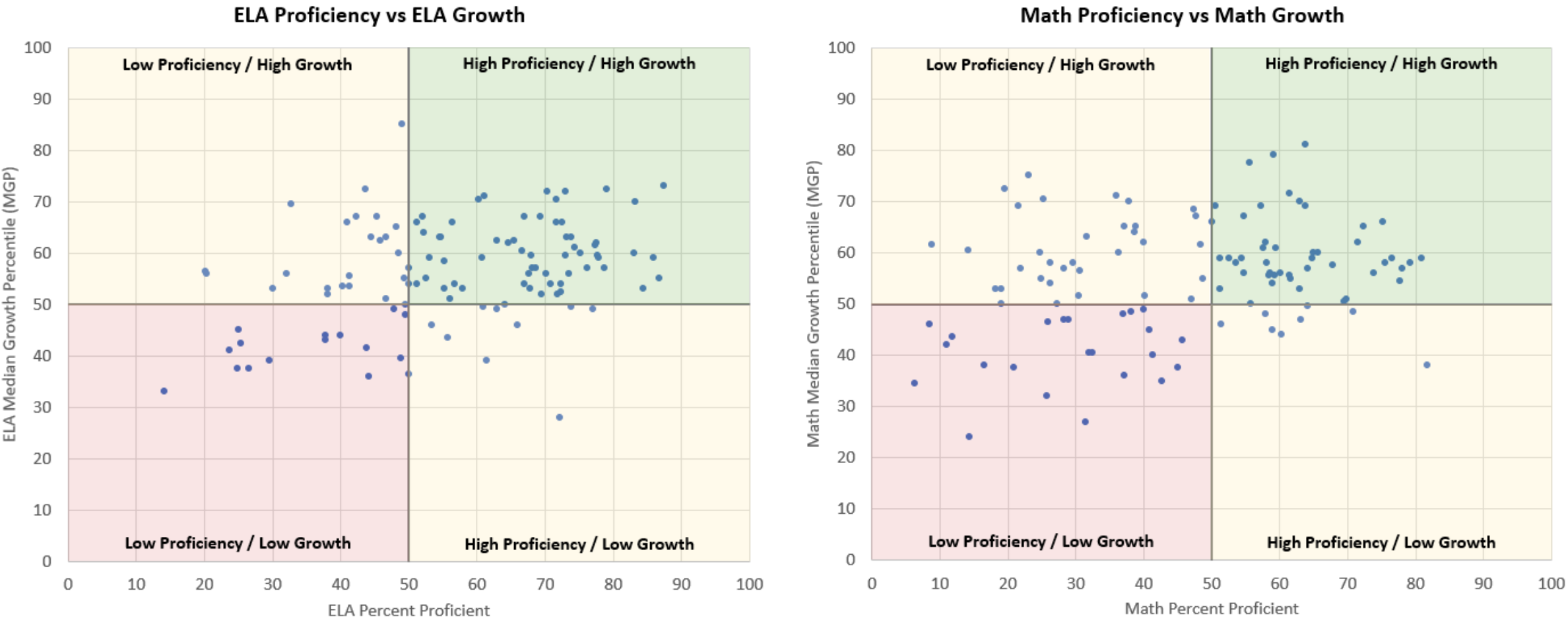
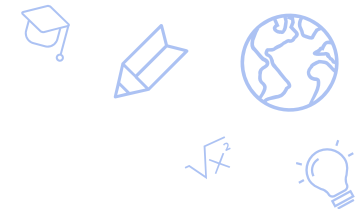
SPCSA NSPF Meeting Growth Targets Trend

- The NDE uses Adequate Growth Percentiles (AGP) to determine if a student has made enough growth to be on track to remain or become proficient.
- A school AGP rate is the percent of students meeting their growth target. If a student meets their target, they are on track to remain or become proficient.
- Adequate Growth Percentiles is worth up to 15 points in the elementary school NSPF and up to 10 points in the middle school NSPF.

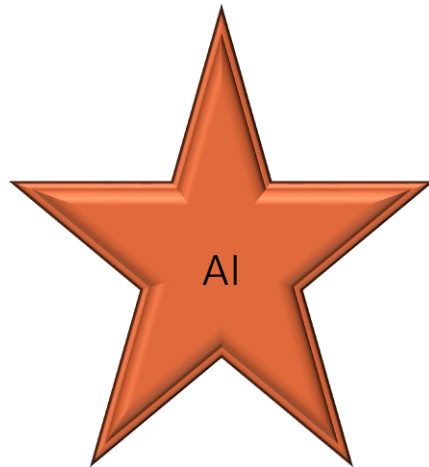


The percent of students meeting their growth targets increased over last year.

SPCSA School Proficiency Versus Growth



For ELA, many SPCSA schools have high proficiency and growth. For Math, the results are more mixed.



Thank you!

charterschools.nv.gov

