

Spring '23 to Spring '24 Nevada MAP Growth Results

Scott Peters, Ph.D.

Director, Research Consulting Partnerships, NWEA

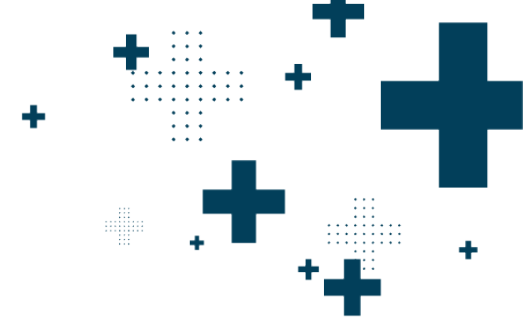


Nevada's Read by Grade 3 Program

- + Purpose: To improve student achievement by ensuring that **all public school elementary students in traditional and charter schools** read proficiently by the end of grade 3
- + Partnership: The NDE-NWEA partnership began in 2017, and includes administering the MAP Growth assessment to public school students (traditional and charter) in grades K-3:
 - Kindergarten: winter and spring
 - Grades 1-3: fall, winter, and spring
- + Focus: 40th percentile and below on the MAP Growth reading assessment has been identified as the indicator which generates support for students reading below grade level
 - Data presented here can be used to understand the state of achievement across NV and identify areas where further support may be needed.



MAP Growth Overview



- Interim assessment typically administered in fall, winter, and spring
- Administered to more than 13 million K-12 students in public and private schools across the country
- Computer-adaptive test that is grade-level independent
- Robust set of nationally representative norms to contextualize student achievement and growth

Table C.1.6: Spring Reading Student Achievement Percentiles

Pct	Grade												Pct	
	K	1	2	3	4	5	6	7	8	9	10	11		12
1	125	138	150	159	167	174	178	180	182	177	181	182	171	1
2	128	142	154	164	171	178	182	185	187	182	186	187	177	2
3	130	145	156	167	174	181	185	188	190	186	189	190	181	3
4	132	147	158	169	176	183	187	190	192	188	192	192	184	4
5	133	148	160	170	178	185	189	191	194	190	194	194	186	5
6	134	149	161	172	179	186	190	193	195	192	195	196	188	6
7	135	150	163	173	181	187	192	194	197	193	197	197	190	7
8	136	151	164	174	182	189	193	195	198	195	198	199	192	8
9	137	152	165	175	183	190	194	196	199	196	199	200	193	9
10	138	153	166	176	184	191	195	197	200	197	200	201	195	10
11	138	154	167	177	185	191	196	198	201	198	201	202	196	11
12	139	155	167	178	186	192	197	199	202	199	202	203	197	12
13	140	155	168	179	186	193	197	200	203	200	203	204	198	13
14	140	156	169	180	187	194	198	201	203	201	204	205	199	14
15	141	157	170	180	188	194	199	201	204	202	205	206	200	15
16	141	157	170	181	189	195	199	202	205	202	205	206	201	16
17	142	158	171	182	189	196	200	203	206	203	206	207	202	17
18	142	158	171	182	190	196	201	203	206	204	207	208	203	18
19	143	159	172	183	191	197	201	204	207	205	208	208	204	19
20	143	159	173	183	191	198	202	205	207	205	208	209	205	20
21	143	160	173	184	192	198	202	205	208	206	209	210	206	21
22	144	160	174	185	192	199	203	206	209	207	209	210	207	22
23	144	161	174	185	193	199	204	206	209	207	210	211	207	23
24	145	161	175	186	193	200	204	207	210	208	211	212	208	24
25	145	162	175	186	194	200	205	207	210	209	211	212	209	25
26	145	162	176	187	194	201	205	208	211	209	212	213	209	26
27	146	163	176	187	195	201	206	208	211	210	212	213	210	27
28	146	163	177	188	195	202	206	209	212	210	213	214	211	28
29	146	164	177	188	196	202	206	209	212	211	213	214	212	29
30	147	164	177	189	196	203	207	210	213	211	214	215	212	30
31	147	164	178	189	197	203	207	210	213	212	214	216	213	31
32	147	165	178	190	197	204	208	211	214	213	215	216	214	32
33	148	165	179	190	198	204	208	211	214	213	216	217	214	33
34	148	166	179	190	198	204	209	212	215	214	216	217	215	34
35	148	166	180	191	199	205	209	212	215	214	217	218	215	35
36	149	166	180	191	199	205	210	212	216	215	217	218	216	36
37	149	167	180	192	199	206	210	213	216	215	217	219	217	37
38	149	167	181	192	200	206	210	213	217	216	218	219	217	38
39	150	167	181	193	200	207	211	214	217	216	218	220	218	39
40	150	168	182	193	201	207	211	214	217	217	219	220	218	40
41	150	168	182	193	201	207	212	215	218	217	219	221	219	41
42	151	169	182	194	202	208	212	215	218	218	220	221	220	42
43	151	169	183	194	202	208	213	215	219	218	220	221	220	43
44	151	169	183	195	202	209	213	216	219	219	221	222	221	44
45	152	170	184	195	203	209	213	216	220	219	221	222	221	45
46	152	170	184	195	203	209	214	217	220	219	222	223	222	46
47	152	170	184	196	204	210	214	217	220	220	222	223	223	47
48	152	171	185	196	204	210	215	218	221	220	223	224	223	48
49	153	171	185	197	204	211	215	218	221	221	223	224	224	49

... continued on next page

Interpretation of Student Achievement

- + Norms are descriptive, not prescriptive
- + 40th percentile:
 - “Achievement greater than 40% of students in that same grade/subject/term”
 - Below-average achievement
- + Consistent threshold above which all students are able to score

Interpretation of Student Achievement

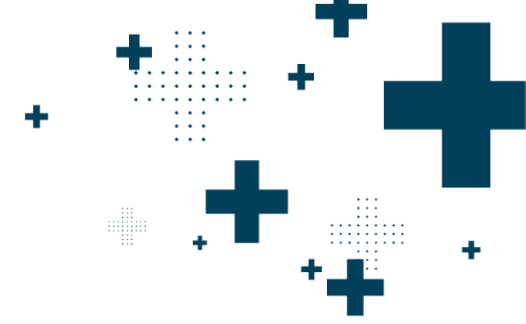
- + What does achievement at the 40th percentile indicate?
- + Based on NWEA's SBAC linking study, a student scoring at the 40th percentile in the spring of 3rd grade would be projected to score at Level 2 on the SBAC test.

Table 3.5. MAP Growth Cut Scores—ELA/Reading

NV SBAC ELA								
Grade	Level 1		Level 2		Level 3		Level 4	
3	2114–2366		2367–2431		2432–2489		2490–2623	
4	2131–2415		2416–2472		2473–2532		2533–2663	
5	2201–2441		2442–2501		2502–2581		2582–2701	
6	2210–2456		2457–2530		2531–2617		2618–2724	
7	2258–2478		2479–2551		2552–2648		2649–2745	
8	2288–2486		2487–2566		2567–2667		2668–2769	

MAP Growth Reading*								
Grade	Level 1		Level 2		Level 3		Level 4	
	RIT	Percentile	RIT	Percentile	RIT	Percentile	RIT	Percentile
Fall								
2	100–163	1–28	164–179	29–68	180–189	69–87	190–350	88–99
3	100–178	1–31	179–191	32–62	192–200	63–80	201–350	81–99
4	100–189	1–34	190–199	35–57	200–208	58–76	209–350	77–99
5	100–193	1–25	194–205	26–53	206–217	54–79	218–350	80–99
6	100–197	1–22	198–211	23–53	212–225	54–82	226–350	83–99
7	100–200	1–20	201–214	21–51	215–229	52–82	230–350	83–99
8	100–204	1–21	205–218	22–51	219–233	52–82	234–350	83–99
Winter								
2	100–172	1–28	173–187	29–66	188–196	67–84	197–350	85–99
3	100–186	1–32	187–198	33–61	199–206	62–78	207–350	79–99
4	100–195	1–33	196–205	34–58	206–213	59–75	214–350	76–99
5	100–199	1–27	200–209	28–51	210–221	52–78	222–350	79–99
6	100–202	1–24	203–215	25–54	216–227	55–80	228–350	81–99
7	100–204	1–22	205–217	23–51	218–231	52–81	232–350	82–99
8	100–207	1–22	208–221	23–53	222–234	54–80	235–350	81–99
Spring								
2	100–177	1–30	178–191	31–65	192–200	66–83	201–350	84–99
3	100–190	1–34	191–201	35–61	202–209	62–78	210–350	79–99
4	100–198	1–35	199–207	36–57	208–215	58–74	216–350	75–99
5	100–201	1–28	202–211	29–52	212–222	53–76	223–350	77–99
6	100–204	1–25	205–216	26–53	217–228	54–79	229–350	80–99
7	100–206	1–23	207–218	24–51	219–232	52–80	233–350	81–99
8	100–209	1–23	210–222	24–52	223–235	53–79	236–350	80–99

Students Tested



- Counts of all student test events in a given grade in the spring of 2023 and 2024
- Grades K-3 in Reading only
- Slightly fewer students tested in 2024 compared to 2023

Grade	Spring '23	Spring '24
K	31,288	28,608
1 st	34,527	32,324
2 nd	32,960	34,728
3 rd	34,228	33,797
Total	133,003	129,457

Reading Achievement Data: All Students (by Grade)



Median Reading Achievement Percentile

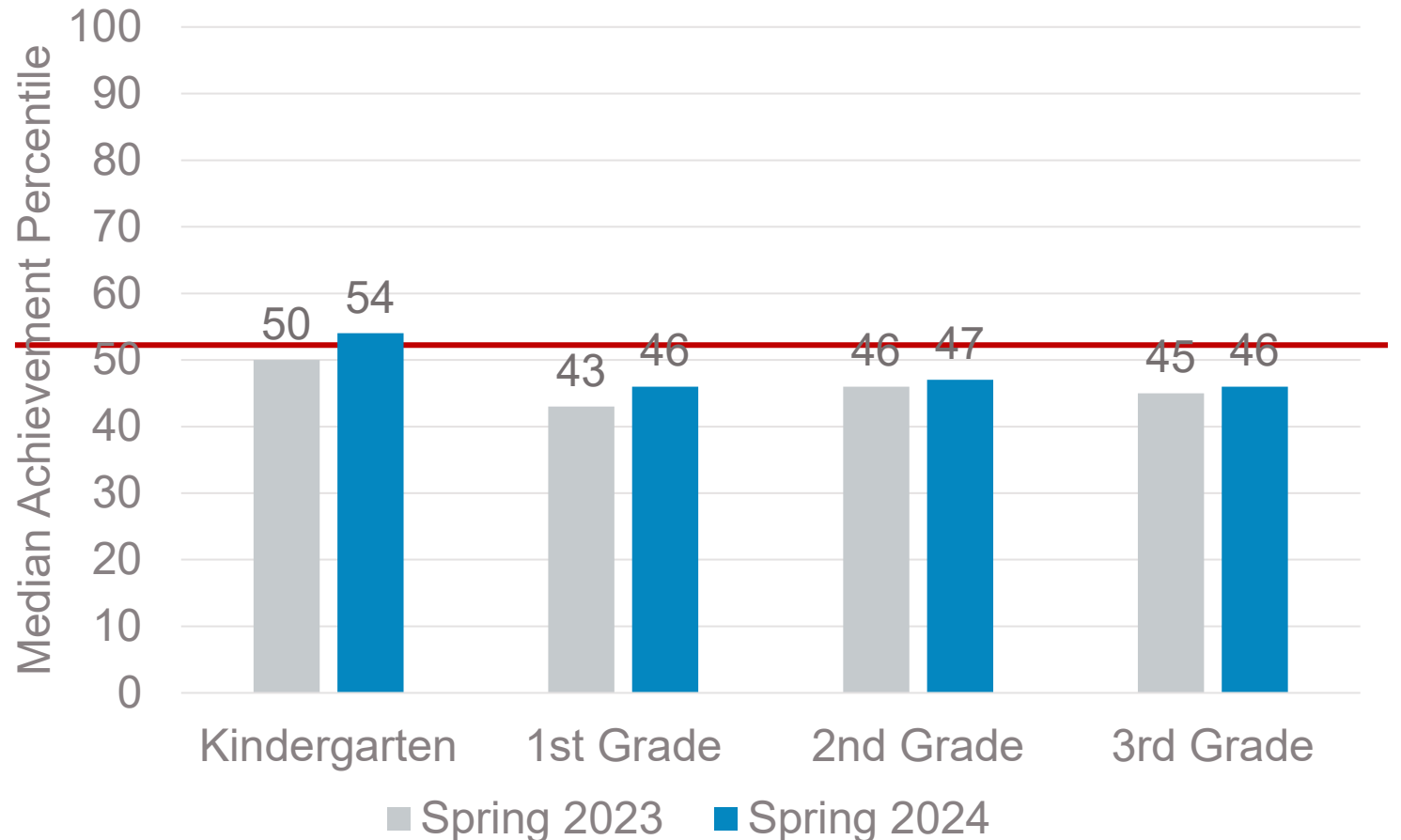


Answers the question:

What is the achievement level of the middle student in NV in a particular grade?

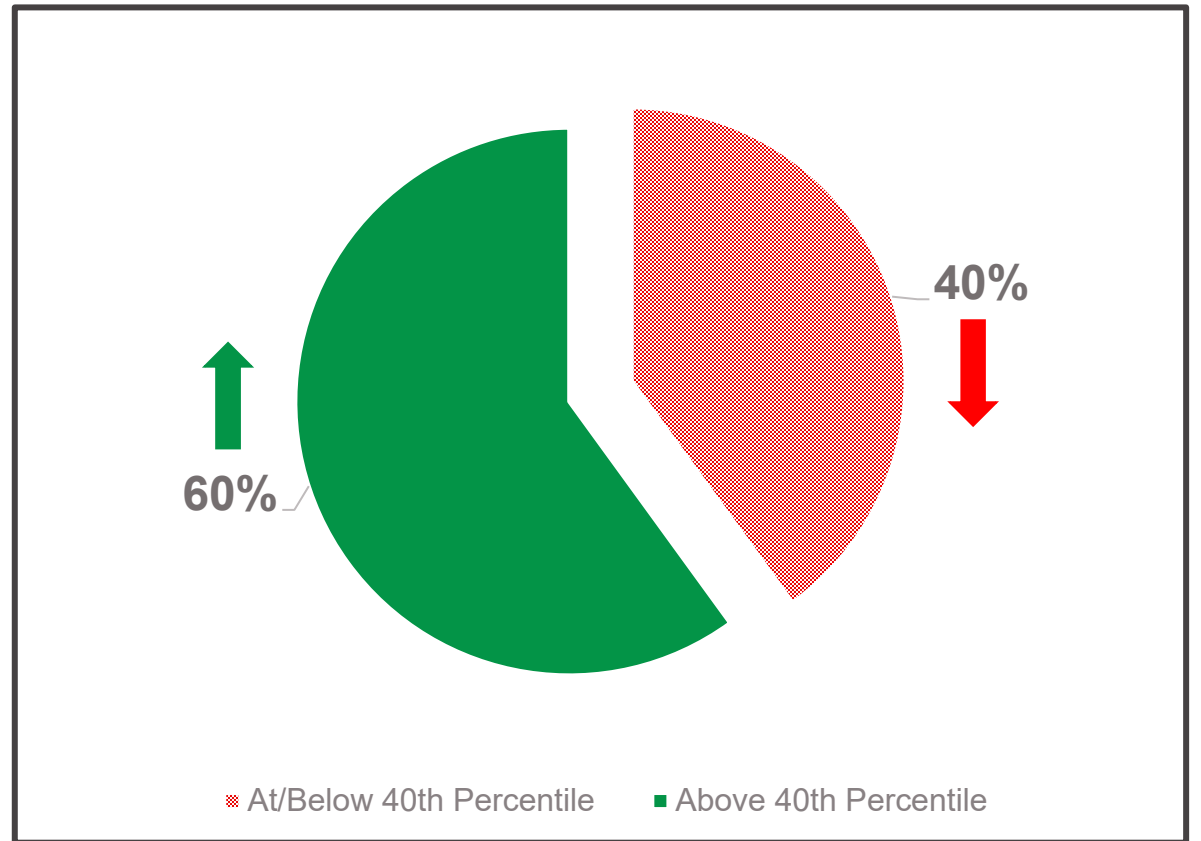
The 50th percentile represents average achievement relative to NWEA's nationally representative norms.

Median Reading Achievement by Grade

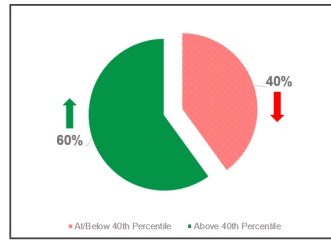


Summarizing the Percentage of Students At/Below the 40th Percentile

- + 40th percentile:
 - “Achievement greater than 40% of students in that same grade/subject/season”
- + Over a large enough sample of students, we’d expect to see:
 - ~40% of students at or below the 40th percentile
 - ~60% of students above the 40th percentile



Percentage of Students At/Below the 40th Percentile – Kindergarten



Spring 2023

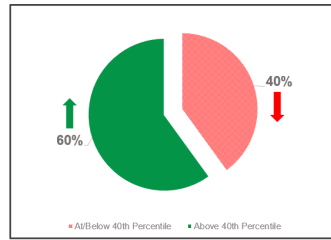
Number of Students	31,288
At/Below 40th Percentile	42%
Above 40th Percentile	58%

Spring 2024

Number of Students	28,608
At/Below 40th Percentile	38%
Above 40th Percentile	62%



Percentage of Students At/Below the 40th Percentile – 1st Grade



Spring 2023

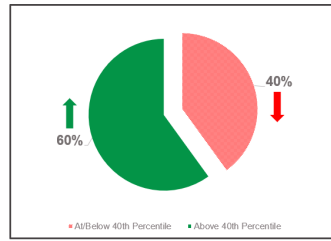
Number of Students	34,527
At/Below 40th Percentile	46%
Above 40th Percentile	54%

Spring 2024

Number of Students	32,324
At/Below 40th Percentile	44%
Above 40th Percentile	56%



Percentage of Students At/Below the 40th Percentile – 2nd Grade



Spring 2023

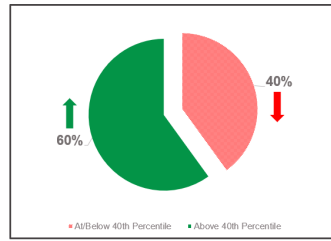
Number of Students	32,960
At/Below 40th Percentile	46%
Above 40th Percentile	54%

Spring 2024

Number of Students	34,728
At/Below 40th Percentile	45%
Above 40th Percentile	55%



Percentage of Students At/Below the 40th Percentile – 3rd Grade



Spring 2023

Number of Students	34,228
At/Below 40th Percentile	46%
Above 40th Percentile	54%

Spring 2024

Number of Students	33,797
At/Below 40th Percentile	45%
Above 40th Percentile	55%

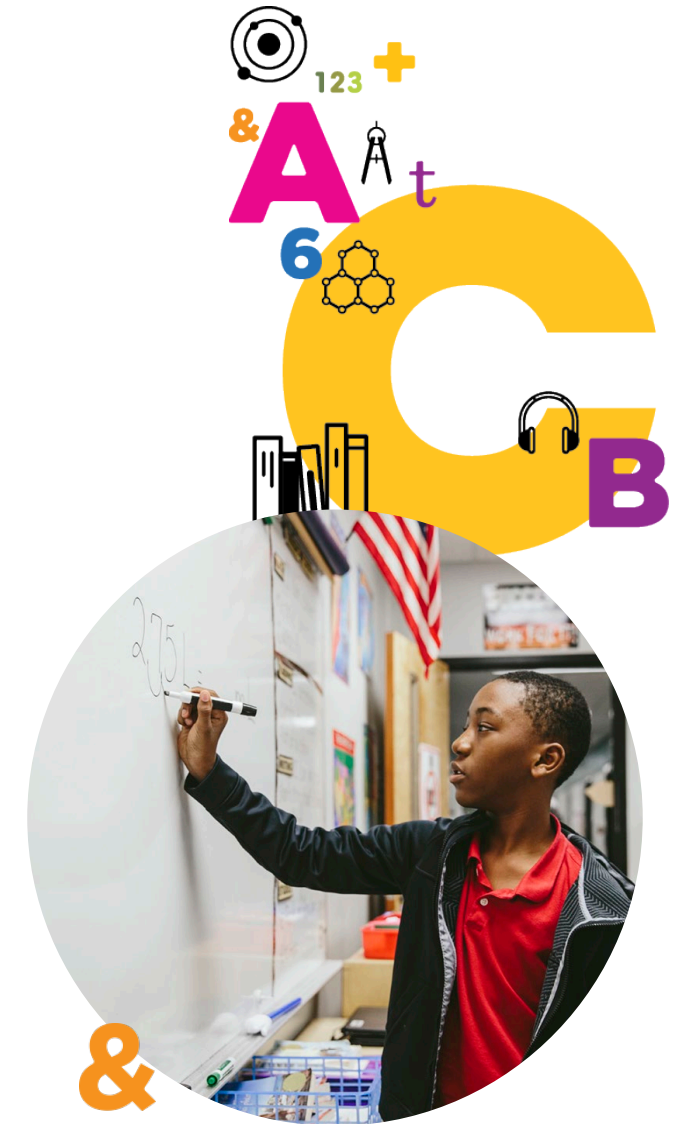


Reading Achievement Data: Student Subgroups



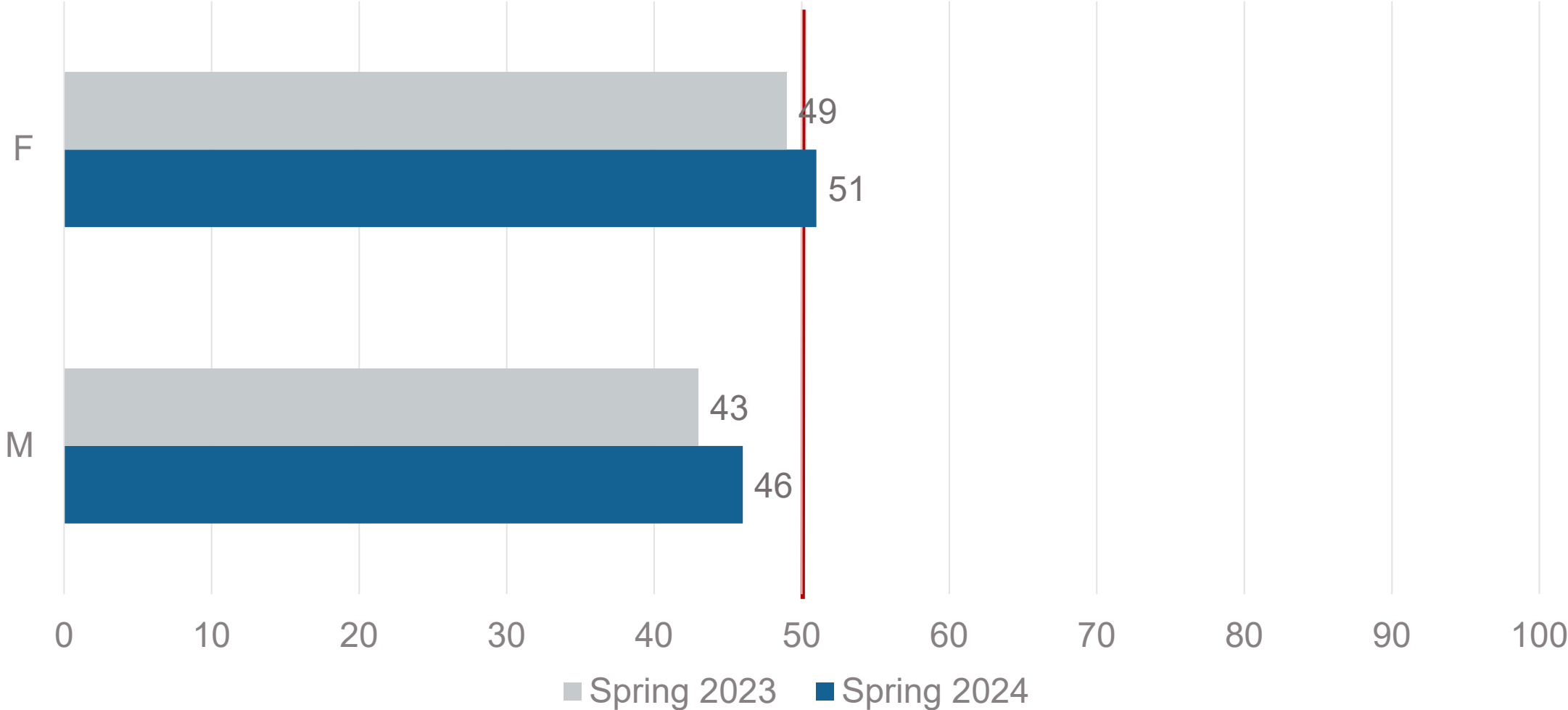
Achievement Summarized for Students by:

- + Gender
- + Race/Ethnicity
- + Special Programs
 - Free & Reduced-Price Lunch
 - English Learners
 - Students with an IEP
- + Median achievement percentile by student group



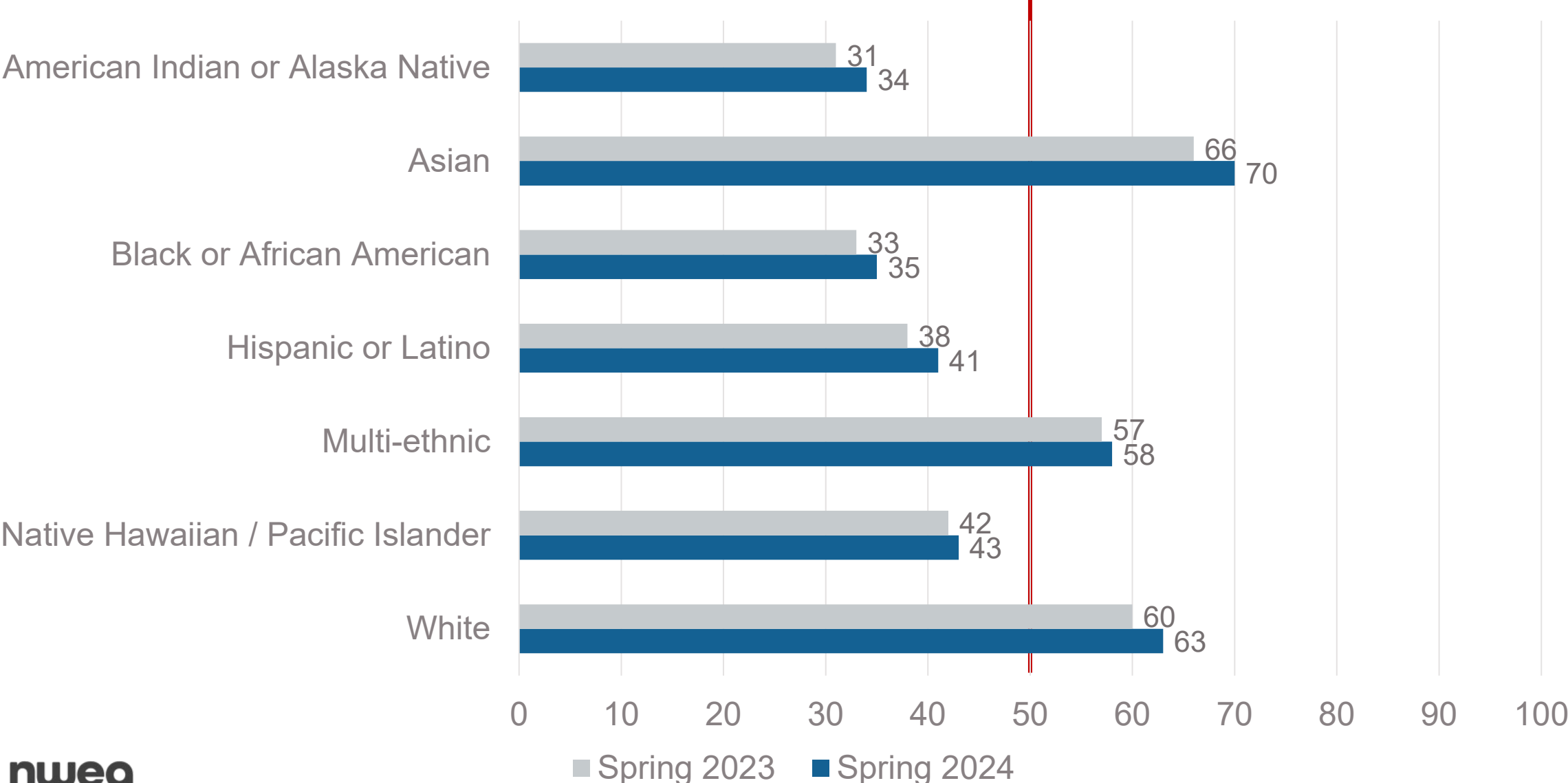
Achievement by Gender

Median Reading Achievement Percentile by Gender



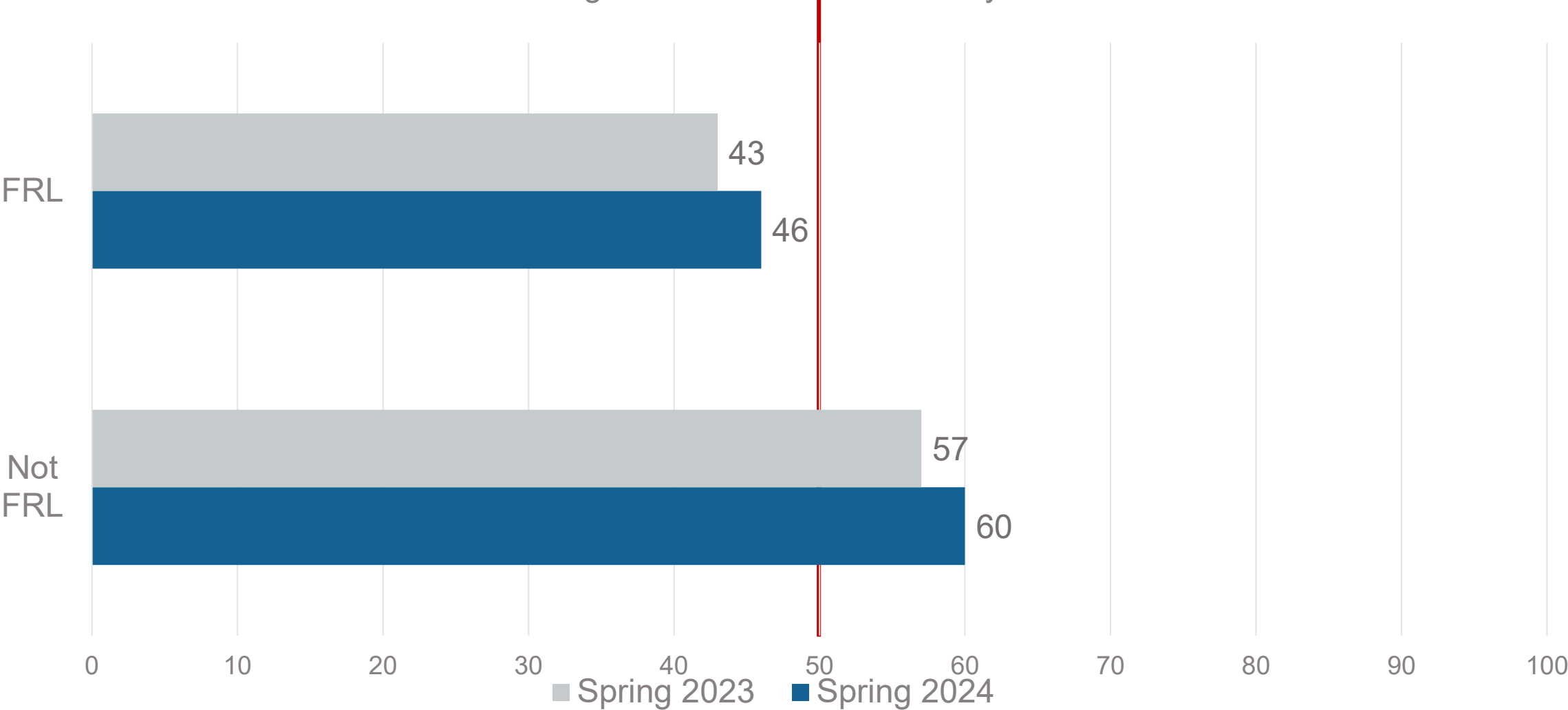
Achievement by Race/Ethnicity

Median Reading Achievement Percentile by Race/Ethnicity



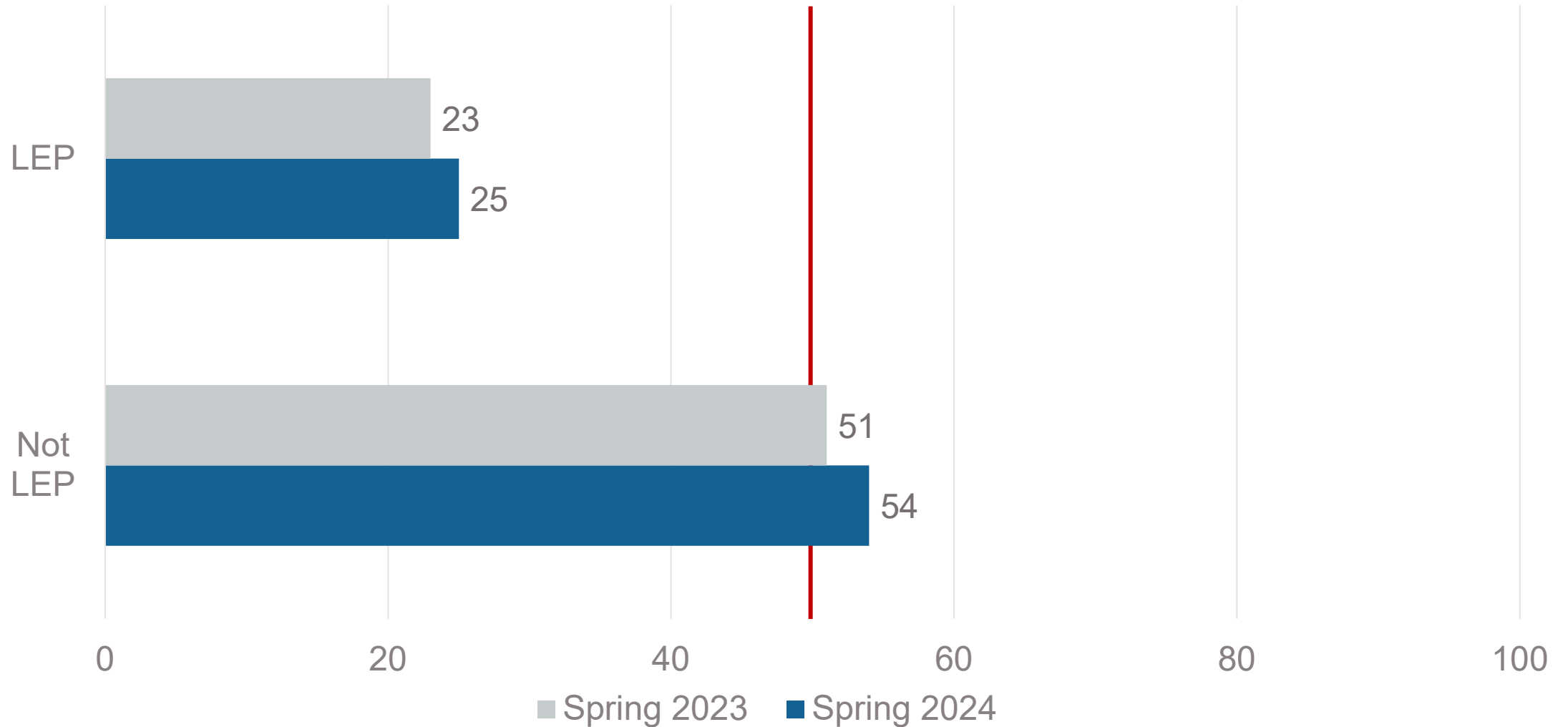
Achievement by Free & Reduced-Price Lunch (FRL) Status

Median Reading Achievement Percentile by FRL Status



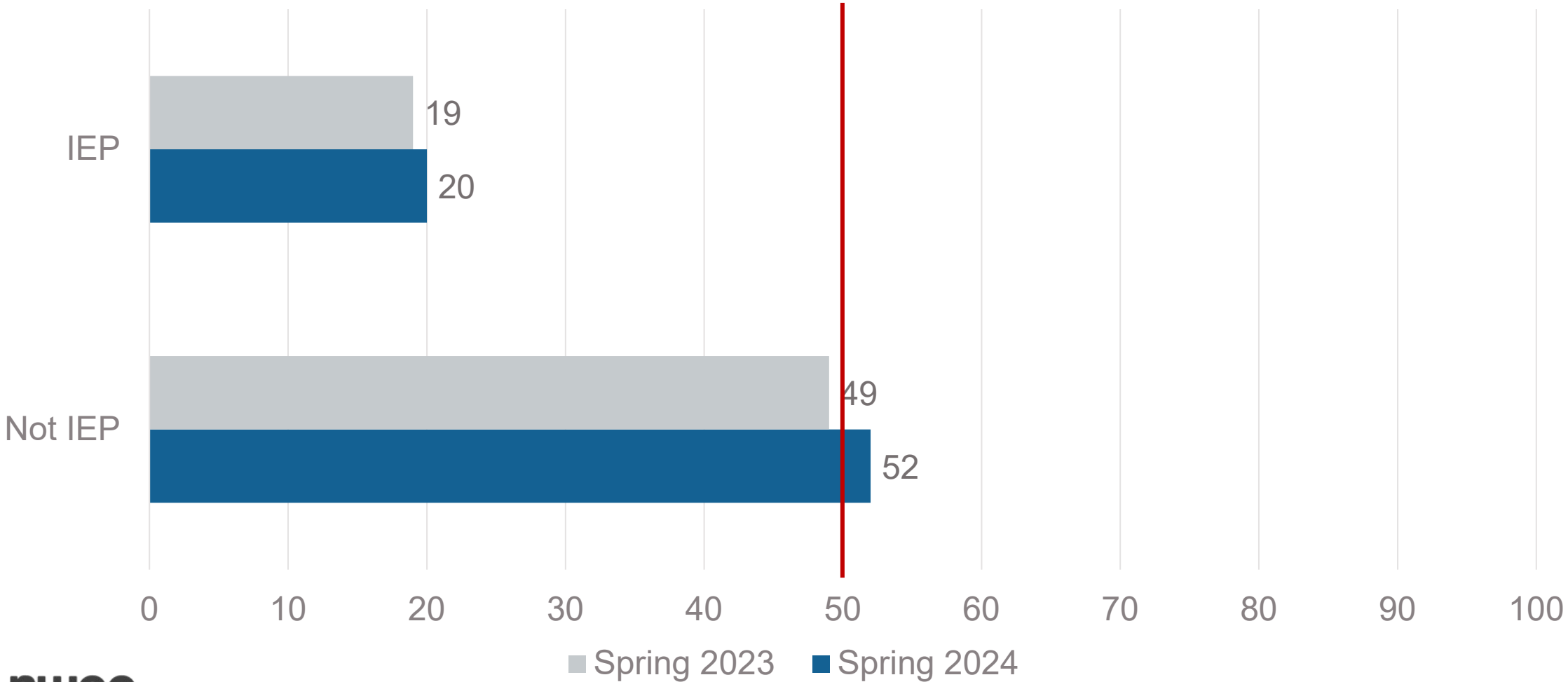
Achievement by Limited English Proficiency (LEP) Status

Median Reading Achievement Percentile by LEP Status



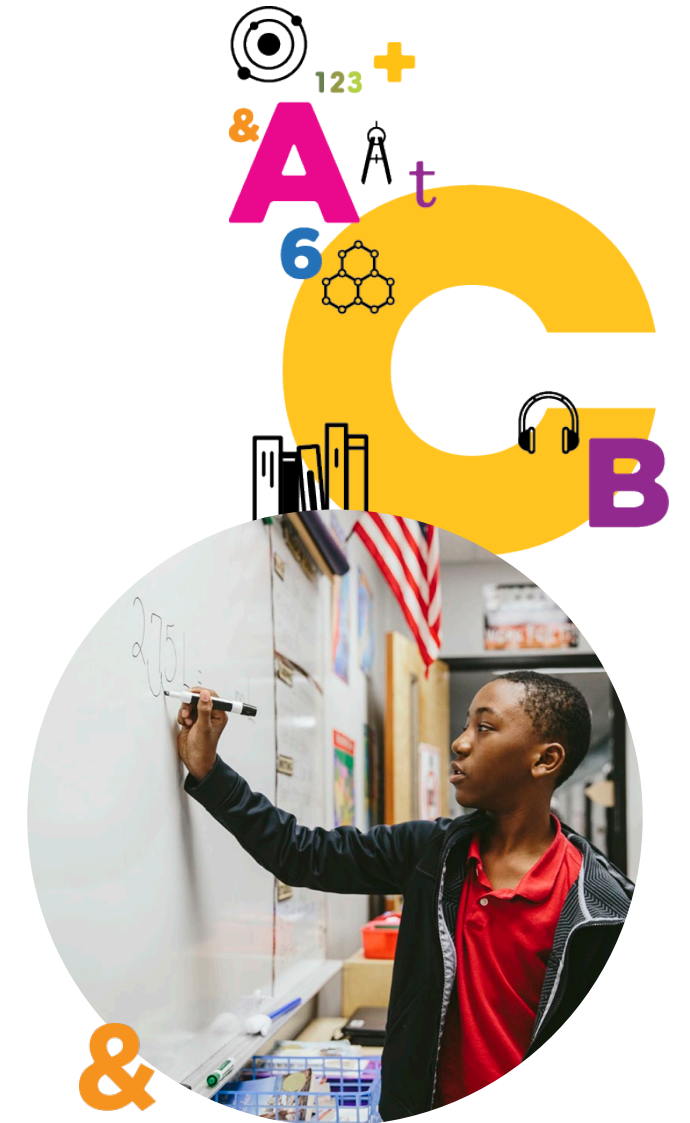
Achievement by Individual Education Plan (IEP) Status

Median Reading Achievement Percentile by IEP Status



Main Takeaways

- General trend is a slight increase in Reading achievement between spring '23 and spring '24
- Increase in median achievement for every grade and across all student subgroups
- Increase in percent of students above the 40th achievement percentile in all grades, with the largest increase in Kindergarten



Professional Learning at a Glance

2023-2024

NWEA Assessment Topics

- eLearning Modules: MAP Growth and MAP Reading Fluency Basics

Science of Reading Topics

- Academy for Literacy Leadership Innovation (ALL In) Nevada workshops
- In-person literacy summit

2024-2025

NWEA Assessment Topics

- On-demand eLearning: Foundations
- In-person, region-specific learning opportunities
- Statewide, virtual professional learning

Science of Reading Topics

- Increased number of ALL In Nevada workshops
 - In-person, region-specific professional learning
 - Statewide, virtual professional learning

Questions?

Scott Peters, Ph.D.

Director, Research Consulting
Partnerships, NWEA

Scott.peters@nwea.org

